

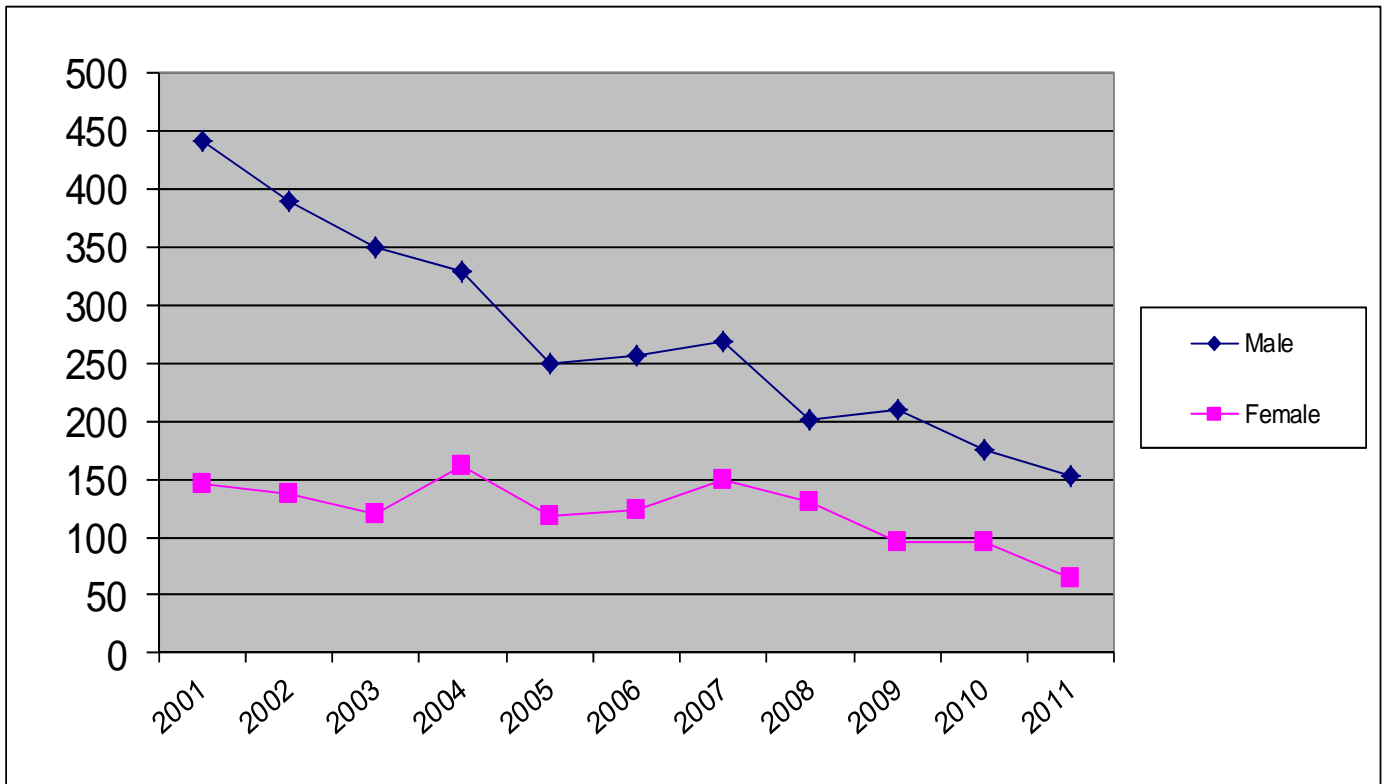
JUVENILE OFFENSES 2011

DELINQUENT AND PETTY OFFENSES

OFFENSE	MALE	FEMALE	TOTAL
ALCOHOL OFFENSE	34	16	50
ASSAULT	12	1	13
CONTROLLED SUBSTANCE CRIME	3	3	6
CRIMINAL DAMAGE TO PROPERTY	6	3	9
CRIMINAL SEXUAL CONDUCT	3	0	3
CURFEW	8	7	15
DISORDERLY CONDUCT	17	6	23
DOMESTIC ASSAULT	3	0	3
DRINK AND DRIVE	1	1	2
ESCAPE FROM CUSTODY	0	1	1
FALSE NAME TO POLICE	1	0	1
INTERFERE WITH 911 CALL	0	1	1
OBSTRUCT JUSTICE	1	0	1
OBSCENITY MATERIAL – PRINT, CIRCULATE	1	0	1
POSSESSION OF DRUG PARAPHERNALIA	15	1	16
POSSESSION OF MARIJUANA	7	1	8
POSSESS PORNOGRAPHY	1	0	1
RECEIVING STOLEN PROPERTY	0	1	1
SHOPLIFTING	7	3	10
THEFT (PETTY MISDEMEANOR)	5	3	8
THEFT (MISDEMEANOR)	13	6	19
THEFT (GROSS MISDEMEANOR)	2	2	4
THEFT (FELONY)	2	0	2
TOBACCO OFFENSE	8	8	16
TRESPASS	1	0	1
VIOLATE ORDER FOR PROTECTION	1	1	2
TOTAL 2011	152	65	217
TOTAL 2010	176	96	272
TOTAL 2009	210	96	306

JUVENILE OFFENSES 2001 - 2011

DELINQUENT AND PETTY OFFENSES



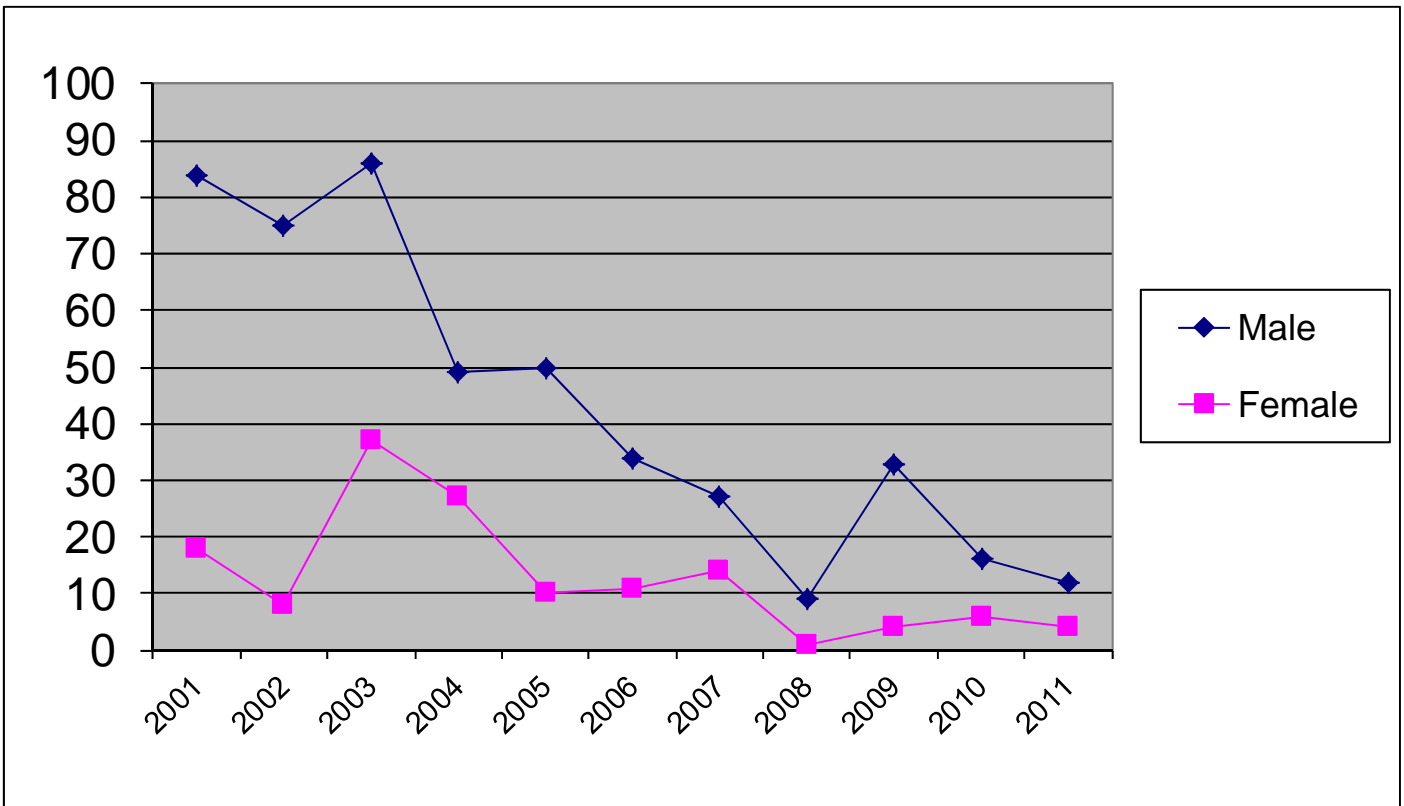
JUVENILE OFFENSES 2011

TRAFFIC

OFFENSE	MALE	FEMALE	TOTAL
CARELESS/RECKLESS DRIVING	2	1	3
MISCELLANEOUS TRAFFIC OFFENSES	5	3	8
NO DRIVER'S LICENSE	2	0	2
NO INSURANCE	2	0	2
SPEED	1	0	1
	_____	_____	_____
TOTAL 2011	12	4	16
	=====	=====	=====
TOTAL 2010	16	6	22
TOTAL 2009	33	4	37

JUVENILE OFFENSES 1999 - 2011

TRAFFIC



TOP TEN JUVENILE OFFENSES

2011

OFFENSE	MALE	FEMALE	TOTAL
ALCOHOL OFFENSE	34	16	50
DISORDERLY CONDUCT	17	6	23
THEFT (MISDEMEANOR)	13	6	19
POSSESS PARAPHERNALIA	15	1	16
TOBACCO USE	8	8	16
CURFEW	8	7	15
ASSAULT	12	1	13
SHOPLIFTING	7	3	10
CRIMINAL DAMAGE TO PROPERTY	6	3	9
POSSESS MARIJUANA	7	1	8

JUVENILE OFFENDER AGE REPORT

2011

AGE	MALE	FEMALE	TOTAL
TEN	2	0	2
ELEVEN	1	0	1
TWELVE	4	3	7
THIRTEEN	7	5	12
FOURTEEN	9	6	15
FIFTEEN	20	5	25
SIXTEEN	20	7	27
SEVENTEEN	32	10	42
TOTALS 2011	95	36	131

JUVENILE OFFENDER RACE REPORT

2011

AGE	MALE	FEMALE	TOTAL
WHITE	81	35	116
HISPANIC	1	1	2
BLACK	12	0	12
AMERICAN INDIAN	0	0	0
UNKNOWN	0	0	0
ASIAN	1	0	1
TOTALS 2011	95	36	131

JUVENILE CHARGES 2011

DELINQUENT/PETTY/TRAFFIC

TYPE	MALE	FEMALE	TOTAL
DELINQUENT OFFENSES	36	12	48
PETTY OFFENSES	116	53	169
TRAFFIC	12	4	16
TOTAL 2011	164	69	233
TOTAL 2010	192	102	294
TOTAL 2009	243	100	343

JUVENILES PLACED ON PROBATION 2011*

TYPE	MALE	FEMALE	TOTAL
PETTY MISDEMEANOR	12	9	21
MISDEMEANOR	63	21	84
GROSS MISDEMEANOR	7	3	10
FELONY	13	3	16
TOTAL 2011	95	36	131
TOTAL 2010	105	48	153
TOTAL 2009	115	51	166

*Unduplicated Offenders Placed on Probation

JUVENILE SOURCE OF OFFENDERS REPORT

2011

SOURCE OF CLIENT	MALE	FEMALE	TOTAL
BATTLE LAKE POLICE DEPARTMENT	4	0	4
BECKER COUNTY SHERIFF'S OFFICE	2	0	2
CASS COUNTY SHERIFF'S OFFICE	1	0	1
CLAY COUNTY SHERIFF'S OFFICE	1	2	3
DETROIT LAKES POLICE DEPARTMENT	1	2	3
DOUGLAS COUNTY SHERIFF'S OFFICE	0	1	1
FERGUS FALLS POLICE DEPARTMENT	74	28	102
HENNING POLICE DEPARTMENT	1	0	1
ITASCA COUNTY SHERIFF'S OFFICE	2	0	2
MN HIGHWAY PATROL	2	0	2
NEW YORK MILLS POLICE DEPARTMENT	4	3	7
STATE OF NORTH DAKOTA	4	8	12
OTTER TAIL COUNTY SHERIFF'S OFFICE	30	7	37
PARKERS PRAIRIE POLICE DEPARTMENT	2	3	5
PELICAN RAPIDS POLICE DEPARTMENT	3	3	6
PERHAM POLICE DEPARTMENT	10	3	13
POPE COUNTY SHERIFF'S OFFICE	1	0	1
ST LOUIS COUNTY SHERIFF'S OFFICE	1	0	1
TODD COUNTY SHERIFF'S OFFICE	1	2	3
WADENA COUNTY SHERIFF'S OFFICE	3	0	3
WILKIN COUNTY SHERIFF'S OFFICE	0	2	2
TOTAL 2011	147	64	211
TOTAL 2010	174	97	271
TOTAL 2009	215	94	309

CHEMICAL AWARENESS PROGRAM (CAP)

2011

JUVENILES

<u>AGE</u>	<u>MALE</u>	<u>FEMALE</u>	<u>TOTAL</u>
12	0	0	0
13	1	1	2
14	1	4	5
15	4	5	9
16	8	4	12
17	13	5	18
18	12	0	12
	-----	-----	-----
TOTAL 2011	39	19	58
	=====	=====	=====
TOTAL 2010	19	33	52
TOTAL 2009	31	26	57

JUVENILES REFERRED BY CITY THEY LIVE IN

BATTLE LAKE	2
DALTON	2
DENT	2
DETROIT LAKES	1
ELIZABETH	3
ERHARD	2
FERGUS FALLS	24
HENNING	4
NEW YORK MILLS	5
PARKERS PRAIRIE	4
PELICAN RAPIDS	1
PERHAM	5
UNDERWOOD	2
VERGAS	1

TOTAL	58

*Tobacco offenses attend the CAP class after October 2010.

KEYS TO INNERVISION
COGNITIVE RESTRUCTURING PROGRAM

2011

JUVENILES

AGE	MALE	FEMALE	TOTAL
12	0	0	0
13	0	0	0
14	0	0	0
15	0	0	0
16	0	0	0
17	0	0	0
18	0	0	0
	<hr/>	<hr/>	<hr/>
TOTAL 2011	0	0	0
	=====	=====	=====
TOTAL 2010	4	3	7
TOTAL 2009	4	4	8

THEFT CLINIC PROGRAM

2011

<u>AGE</u>	<u>MALE</u>	<u>FEMALE</u>	<u>TOTAL</u>
10	0	0	0
11	1	0	1
12	0	0	0
13	2	1	3
14	2	1	3
15	2	4	6
16	1	0	1
17	6	1	7
18	2	1	3
TOTAL 2011	16	8	24
TOTAL 2010	11	4	15
TOTAL 2009	23	9	32

JUVENILES REFERRED BY CITY THEY LIVE IN

DEER CREEK	1
ELIZABETH	2
ERHARD	1
FERGUS FALLS	12
HENNING	1
PELICAN RAPIDS	2
PERHAM	2
ROTHSAY	2
VINING	1
TOTAL	24

ADULT OFFENSES PLACED UNDER SUPERVISION 2011

OFFENSE	MALE	FEMALE	TOTAL
ALCOHOL OFFENSE	7	2	9
ASSAULT	7	1	8
ASSAULT (DOMESTIC)	29	12	41
CONTRIBUTE TO DELINQUENCY OF MINOR	1	0	1
CRIMINAL DAMAGE TO PROPERTY	9	3	12
CRIMINAL SEXUAL CONDUCT	4	0	4
CRIMINAL VEHICULAR OPERATION	3	0	3
DISORDERLY CONDUCT	9	2	11
DRINK AND DRIVE	3	0	3
DRIVING AFTER REVOCATION/CANCELLATION	7	1	8
DWI*	94	29	123
FALSE NAME TO POLICE	3	1	4
FORGERY	1	1	2
FURNISHING ALCOHOL TO MINORS	2	0	2
INTERFERE WITH 911 CALL	7	0	7
ISSUE WORTHLESS CHECKS	2	0	2
MALCIOUS PUNISHMENT OF CHILD	1	0	1
OBSTRUCT LEGAL PROCESS	2	0	2
OPEN BOTTLE	1	0	1
POSSESS PARAPHERNALIA	1	0	1
POSSESS STOLEN PROPERTY	1	0	1
PUBLIC NUISANCE	2	0	2
REFUSE TO SUBMIT TO TESTING	4	4	8
SHOPLIFTING	0	1	1
STRAY ANIMALS AT LARGE	0	3	3
TERRORISTIC THREATS	1	0	1
THEFT (GROSS MISDEMEANOR)	1	0	1
THEFT (MISDEMEANOR)	5	4	9
TRAFFIC (MISDEMEANOR)	9	9	18
TRESPASS	1	0	1
VIOLATION OF NO CONTACT ORDER	5	0	5
VIOLATION OF ORDER FOR PROTECTION	9	1	10
TOTAL 2011	231	74	305
=====			
TOTAL 2010	202	57	259
TOTAL 2009	222	66	288

*Includes DWI Court Offenders

ADULT SOURCE OF OFFENDERS REPORT

2011

SOURCE OF CLIENT	MALE	FEMALE	TOTAL
BECKER COUNTY SHERIFF'S OFFICE	2	0	2
BATTLE LAKE POLICE DEPARTMENT	2	0	2
CLAY COUNTY SHERIFF'S OFFICE	1	0	1
COOK COUNTY SHERIFF'S OFFICE	1	0	1
DOUGLAS COUNTY SHERIFF'S OFFICE	4	0	4
FERGUS FALLS POLICE DEPARTMENT	56	20	76
GRANT COUNTY SHERIFF'S OFFICE	0	2	2
HENNEPIN COUNT SHERIFF'S OFFICE	0	1	1
MN HIGHWAY PATROL	11	10	21
NEW YORK MILLS POLICE DEPARTMENT	5	1	6
OTTER TAIL COUNTY SHERIFF'S OFFICE	101	29	130
PARKERS PRAIRIE POLICE DEPARTMENT	3	0	3
PELICAN RAPIDS POLICE DEPARTMENT	4	2	6
PERHAM POLICE DEPARTMENT	17	3	20
RAMSEY COUNTY SHERIFF'S OFFICE	0	1	1
STATE OF NORTH DAKOTA	2	0	2
STATE OF WISCONSIN	1	0	1
WADENA COUNTY SHERIFF'S OFFICE	2	0	2
WRIGHT COUNTY SHERIFF'S OFFICE	1	0	1
TOTAL 2011	213	69	282

DWI COURT

2011

<u>OFFENSE</u>	<u>MALE</u>	<u>FEMALE</u>	<u>TOTAL</u>
DWI IN THE SECOND DEGREE (GROSS MISD)	6	3	9
DWI IN THE THIRD DEGREE (GROSS MISD)	0	1	1
REFUSE TEST IN THE THIRD DEGREE (GROSS MISD)	<u>0</u>	<u>1</u>	<u>1</u>
TOTAL 2011	6	5	11

AGE OF OFFENDER:

20-29	2	0	2
30-39	2	1	3
40-49	1	1	2
50-59	<u>1</u>	<u>3</u>	<u>4</u>
	6	5	11

GRADUATION FROM DWI COURT PROGRAM:	8
UNSUCCESSFUL TERMINATION FROM PROGRAM:	3

CITY OF RESIDENCE

FERGUS FALLS	9
PELICAN RAPIDS	1
PERHAM	<u>1</u>
	11

AVERAGE DWI COURT PARTICIPANT STARTING THE PROGRAM:

	<u>MALE</u>	<u>FEMALE</u>
DWI COURT REFERRAL OFFENSE	GROSS MISD	GROSS MISD
NUMBER OF DWI'S	2.3	2.0
AGE	37	48
CHEMICALLY DEPENDENT	YES	YES
EMPLOYMENT STATUS	FULL-TIME	UNEMPLOYED
MARITAL STATUS	DIVORCED	DIVORCED
NUMBER OF CHILDREN	1.1	1.4

PRE-TRIAL RELEASE SUPERVISION

2011

PRE-TRIAL RELEASE SUPERVISION	MALE	FEMALE	TOTAL
RANDOM TESTING	3	4	7
REMOTE ELECTRONIC ALCOHOL MONITORING	43	21	64

TOTAL 2011

9.38% of the electronic monitoring and 25% of the random testing cases resulting in violation reports by Probation Officers.

PRIMARY OFFENSES CHARGED:

ASSAULT	0	2	2
ASSAULT (DOMESTIC)	0	2	2
CRIMINAL SEXUAL CONDUCT	1	0	1
CRIMINAL VEHICULAR INJURY/DWI	0	1	1
DOMESTIC ASSAULT	1	1	2
DRIVING AFTER CANCELLATION	2	0	2
DUI IN THE SECOND DEGREE	23	7	30
DUI IN THE THIRD DEGREE	17	7	24
DUI IN THE FOURTH DEGREE	0	2	2
REFUSE TO SUBMIT TO TESTING	2	2	4
UNDERAGE CONSUMING	<u>0</u>	<u>1</u>	<u>1</u>
	46	25	71

<u>AGE OF OFFENDER:</u>	MALE	FEMALE	TOTAL
18-29	16	5	21
30-39	11	7	18
40-49	8	6	14
50-59	6	3	9
60+	<u>2</u>	<u>0</u>	<u>2</u>
	43	21	64

ADULT OFFENDER AGE REPORT

2011

AGE	MISD	GROSS MISD	TOTAL
17 – 20	24	10	34
21 – 30	36	49	85
31 – 40	20	35	55
41 – 50	20	32	52
51 – 60	8	12	20
61+	8	5	13
TOTALS 2011	116	143	259

ADULT OFFENDER RACE REPORT

2011

TYPE	MISD	GROSS MISD	TOTAL
WHITE	102	133	235
HISPANIC	4	3	7
BLACK	7	5	12
AMERICAN INDIAN	2	2	4
ASIAN	1	0	1
TOTAL 2011	116	143	259
TOTAL 2010	85	146	231
TOTAL 2009	113	134	247

OTTER TAIL COUNTY
 PRE-TRIAL BAIL EVALUATIONS

2011

	MALE	FEMALE	TOTAL
PRE-TRIAL BAIL EVALUATIONS 2011	64	27	91
COMPLETED 2010	46	12	58

OFFENSES REQUIRING JUDICIAL REVIEW

ASSAULT IN THE FIFTH DEGREE	6
DOMESTIC ASSAULT	62
INTERFERE WITH 911 CALL	6
OBSTRUCT LEGAL PROCESS	2
VIOLATION OF NO CONTACT ORDER	9
VIOLATION OF ORDER FOR PROTECTION	4
VIOLATION OF RESTRAINING ORDER	1
VIOLATION OF HARASSMENT ORDER	1
	91

OTTER TAIL COUNTY
 DRIVERS LICENSE REINSTATEMENT PROGRAM

2011

	MALE	FEMALE	TOTAL
COURT REFERRALS TO PROBATION	3	1	4

 2 Defendants chose not to participate in the Driver's License program.

 0 Received Driver's License.

OTTER TAIL COUNTY PROBATION PROGRAMS FOR 2011

JUVENILE OUT-OF-HOME PLACEMENTS:

Out-of-Home Placements: 36 (2010 = 40; 2009 = 47)

Juvenile Sex Offender Specific Treatment: 2 (2010 = 4; 2009 = 3)

Shelter Care Placements: 11 (2010 = 7; 2009 = 17)

Juveniles Held in Secure Detention: 60 (2010 = 49; 2009 = 57)

Average Number of Days Held in Secure Detention: 10.73 (2010 = 7.61; 2009 = 6.19)

Cost of Out-of-Home Placements: \$692,185.89 (2010 = \$649,112.00; 2009 = \$751,487.42)

Cost of Secure Detention: \$180,947.88 (2010 = \$182,500.00; 2009 = \$50,752.00)

FINES:

Total Number of Juveniles Fined: 132 (2010 = 110; 2009 = 141)

Total Amount of Juvenile Fines Assessed: \$10,260.00 (2010 = \$9,210.00; 2009 = \$12,275.00)

Total Amount of Juvenile Fines Collected: \$5,051.00

A total of \$1,227.00 in fines was worked off through community service work.

RESTITUTION:

Total Number of Juveniles ordered to pay restitution: 40

Total Amount of Restitution Ordered: \$12,459.00

Total Amount of Restitution Paid: \$8,556.00

OTTER TAIL COUNTY PROBATION PROGRAMS FOR 2011 (CONTINUED)

JUVENILE RESTITUTION WORK PROGRAM:

Number of Juveniles Referred to Program: 10

Number of Hours Worked: 272

Amount Paid Out to Victims: \$1,631.49

PROBATION RESTRUCTURE/MODIFICATION 2011

Number of Probation Case Modifications approved: 0 (2010 = 4, 2009 = 0)

Additional Community Service Hours Imposed: 0 (2010 = 21, 2009 = 0)

Additional Chemical Dependency Evaluations Assigned: 0 (2010 = 0, 2009 = 0)

Additional Random Urinalysis Testing Authorized: 0 (2010 = 1, 2009 = 0)

COMMUNITY SERVICE:

193 Juveniles:	3,776.0	Community Service Work Hours Assigned
	2,550.0	Community Service Work Hours Completed in Otter Tail County
	295.0	Community Service Work Hours Completed in Other Counties

54 Adults:	2,592.0	Community Service Work Hours Assigned
	1,780.0	Community Service Work Hours Completed in Otter Tail County
	195.0	Community Service Work Hours Completed in Other Counties

A total of 6,368.0 community service work hours were assigned during 2011. A total of 4,330.0 community service work hours were supervised in Otter Tail County worksites. A total of 490 community service work hours were supervised for Otter Tail County by another county. (2010 = 5,562.0 hours assigned; 2009 = 7,077.0 hours assigned)

Department of Corrections Community Service Work Supervised by Otter Tail County Community Service Specialist:

10 Adults:	1,738.0	Community Service Work Hours Assigned
	763.0	Community Service Work Hours Completed in Otter Tail County

DISTRICT COURT REFERRALS:

Pre-Sentence Investigations Conducted: 14 (2010 = 25; 2009 = 33)

Gross Misdemeanor Bond Studies: 0 (2010 = 1; 2009 = 0)

Domestic Abuse Investigations: 70 (2010 = 38; 2009 = 40)

Accepted into Misdemeanant Diversion Program: 7 (2010 = 3; 2009 = 9)

PROBATION SUPERVISION FEES 2011

	Amount Assessed	Amount Waived	Amount Collected	Collection Rate
Adult Gross Misdemeanor Supervision Fees	\$11,000.00		\$6,461.00	
Adult Misdemeanor Supervision Fees	7,075.00		2,325.00	
Adult Transfer-In Gross Misdemeanor Supervision Fees	400.00		1,000.00	
Adult Transfer-In Misdemeanor Supervision Fees	600.00		340.00	
Adult Transfer Out Fees	1,400.00		825.00	
Community Service Work Supervision Fees	475.00		525.00	
Driver's License Reinstatement Fees	400.00		300.00	
DWI Court	650.00		650.00	
Pre-Trial Conditional Release Fees	7,500.00		6,470.00	
Adult Informal, Unsupervised Probation Fees	3,650.00		2,300.00	
Misdemeanor Diversion Fees	400.00		200.00	
Juvenile Petty Offender Fees	2,200.00		1,825.00	
Juvenile Delinquency Fees (Findings Withheld)	525.00		350.00	
Juvenile Delinquency Fees – Felony	800.00		200.00	
Juvenile Delinquency Fees – Gross Misdemeanor	300.00		450.00	
Juvenile Delinquency Fees – Misdemeanor	1,150.00		740.00	
Positive Urinalysis Test	902.00		342.00	
Positive UA Confirmation	120.00		30.00	
Positive PBT Test	<u>40.00</u>		<u>40.00</u>	
	\$39,589.00	\$7,235.00	\$25,373.00	78.42%

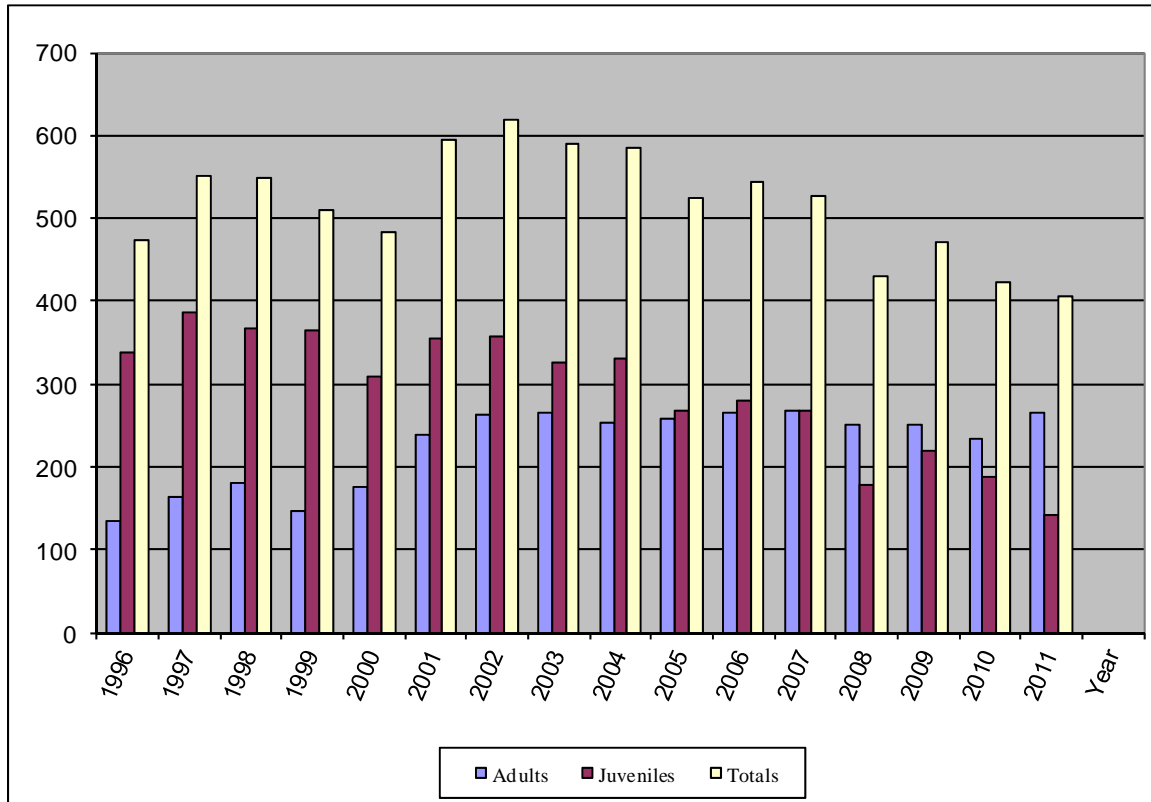
2011 Annual Intakes

Juviles: <u>142</u>	Number Drug/Alcohol related: <u>39</u>	Percentage: <u>34.33 %</u>
Adults: <u>265</u>	Number Drug/Alcohol related: <u>192</u>	Percentage: <u>71.48%</u>

Otter Tail County Probation
Adult – Juvenile Annual Intakes

	ADULTS	JUVENILES	TOTALS
1992	123	218	341
1993	118	230	348
1994	118	288	406
1995	194	287	481
1996	136	338	474
1997	164	386	550
1998	181	368	549
1999	147	364	511
2000	175	308	483
2001	240	354	594
2002	262	357	619
2003	265	326	591
2004	253	332	585
2005	258	267	525
2006	265	279	544
2007	269	269	527
2008	250	179	429
2009	251	220	471
2010	235	189	424
2011	265	142	407

Otter Tail County Probation Adult – Juvenile Annual Intakes



Month-End Caseload

	<u>2011</u>	<u>2010</u>	<u>2009</u>	<u>2008</u>	<u>2007</u>	<u>2006</u>	<u>2005</u>	<u>2004</u>	<u>2003</u>	<u>2002</u>	<u>2001</u>	<u>2000</u>	<u>1999</u>	<u>1998</u>	<u>1997</u>	<u>1996</u>	<u>1995</u>
JANUARY	366	360	407	389	376	324	322	341	389	384	318	312	351	313	308	280	279
FEBRUARY	355	363	403	375	362	327	314	335	375	396	327	310	352	326	310	305	282
MARCH	382	354	397	385	372	330	305	320	345	382	312	322	344	325	310	297	299
APRIL	371	360	426	389	371	326	312	328	333	364	319	330	330	325	312	315	306
MAY	377	360	416	374	381	324	321	321	335	356	322	346	307	328	311	319	299
JUNE	382	359	400	356	354	317	321	333	320	350	336	346	315	338	295	317	285
JULY	372	358	395	352	339	317	294	324	323	363	337	326	307	349	329	308	278
AUGUST	359	360	376	334	352	315	309	330	331	379	327	319	301	326	318	327	265
SEPTEMBER	349	362	370	345	380	318	302	335	313	383	329	313	313	330	332	317	275
OCTOBER	358	353	364	368	373	340	319	344	333	380	344	327	312	328	325	305	295
NOVEMBER	375	360	357	371	389	353	313	347	336	392	353	323	295	338	333	317	275
DECEMBER	379	368	365	373	386	362	307	338	336	406	354	313	304	355	310	308	255
AVERAGE MONTHLY CASELOAD	369	360	390	368	370	329	312	333	339	378	332	324	319	332	316	310	283

Adult-Juvenile Average Monthly Caseload

