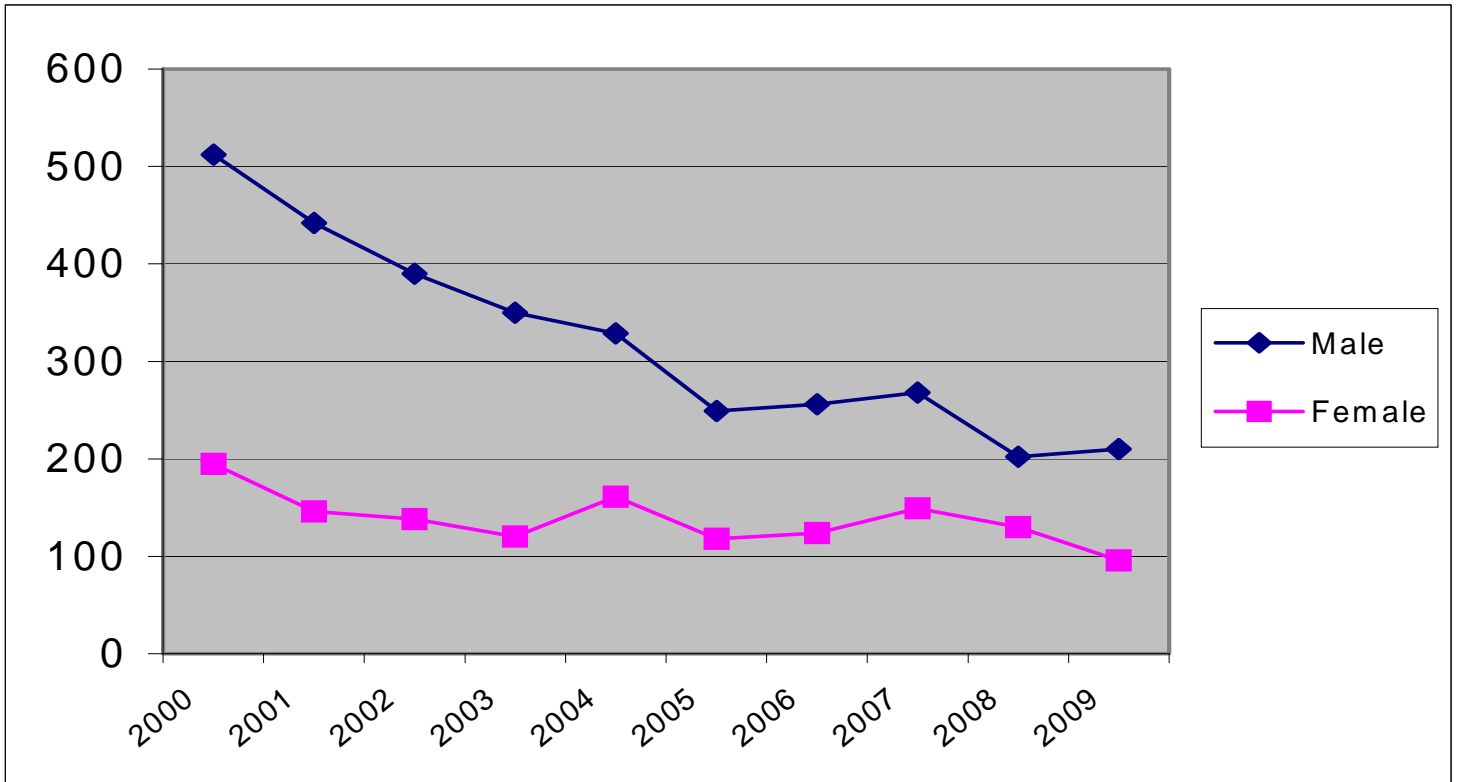


## JUVENILE OFFENSES 2009

### DELINQUENT AND PETTY OFFENSES

<b>OFFENSE</b>	<b>MALE</b>	<b>FEMALE</b>	<b>TOTAL</b>
ALCOHOL OFFENSE	51	52	103
ASSAULT	9	3	12
BURGLARY	4	0	4
CONTEMPT	1	1	2
CONTROLLED SUBSTANCE CRIME	0	1	1
COUNTERFEITING	1	0	1
CRIMINAL DAMAGE TO PROPERTY	15	0	15
CRIMINAL MISCHIEF	1	0	1
CRIMINAL SEXUAL CONDUCT	1	0	1
CURFEW	2	0	2
DISORDERLY CONDUCT	28	4	32
DRINK AND DRIVE	3	1	4
FALSE NAME TO POLICE	3	0	3
FLEE POLICE	2	0	2
FORGERY	1	0	1
FURNISHING ALCOHOL TO MINORS	0	1	1
INTERFERE WITH 911 CALL	2	1	3
LITTERING	1	0	1
OBSCENE TELEPHONE CALLS	1	0	1
OBSTRUCTING JUSTICE	2	0	2
OPEN BOTTLE	3	1	4
POSSESSION OF DRUG PARAPHERNALIA	7	3	10
POSSESSION OF MARIJUANA	5	3	8
RECEIVING STOLEN PROPERTY	3	0	3
SHOPLIFTING	2	1	3
TAMPER WITH MOTOR VEHICLE	2	0	2
TATTOO MINOR	1	0	1
TERRORISTIC THREATS	1	0	1
THEFT (PETTY MISDEMEANOR)	5	1	6
THEFT (MISDEMEANOR)	19	8	27
THEFT (GROSS MISDEMEANOR)	1	0	1
THEFT (FELONY)	4	0	4
THEFT OF MOTOR VEHICLE	0	1	1
TOBACCO OFFENSE	20	10	30
TRESPASS	8	2	10
VIOLATION OF ORDER FOR PROTECTION	0	2	2
WEAPON ON SCHOOL GROUNDS	1	0	1
<b>TOTAL 2009</b>	<b>210</b>	<b>96</b>	<b>306</b>
<b>TOTAL 2008</b>	<b>202</b>	<b>130</b>	<b>332</b>
<b>TOTAL 2007</b>	<b>268</b>	<b>149</b>	<b>417</b>

### JUVENILE OFFENSES 2000 - 2009 DELINQUENT AND PETTY OFFENSES



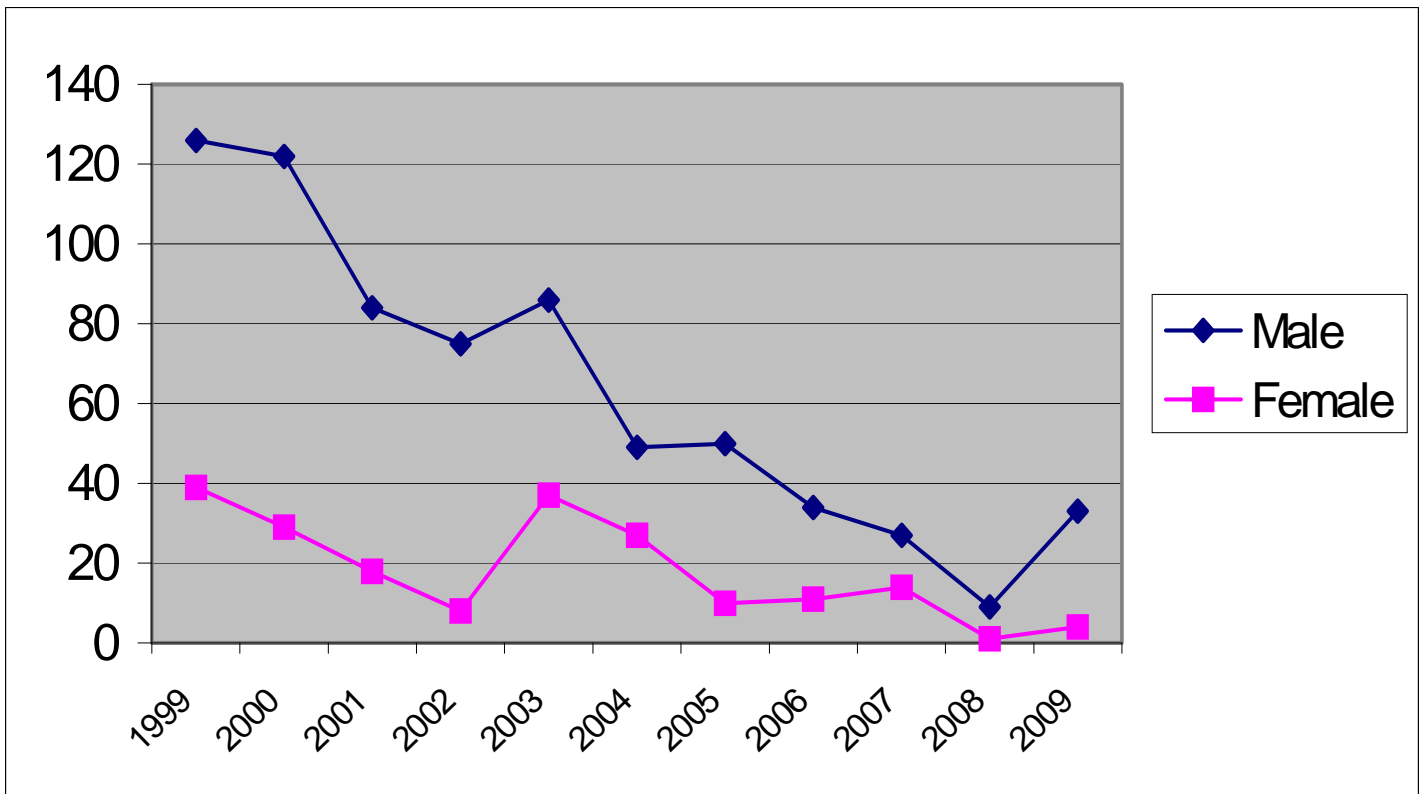
## JUVENILE OFFENSES 2009

### TRAFFIC

<b>OFFENSE</b>	<b>MALE</b>	<b>FEMALE</b>	<b>TOTAL</b>
CARELESS/RECKLESS DRIVING	13	0	13
MISCELLANEOUS TRAFFIC OFFENSES	13	1	14
NO DRIVER'S LICENSE	6	3	9
NO INSURANCE	1	0	1
	_____	_____	_____
<b>TOTAL 2009</b>	<b>33</b>	<b>4</b>	<b>37</b>
	=====	=====	=====
TOTAL 2008	9	1	10
TOTAL 2007	27	14	41

## JUVENILE OFFENSES 1999 - 2009

### TRAFFIC



## TOP TEN JUVENILE OFFENSES

2009

<b>OFFENSE</b>	<b>MALE</b>	<b>FEMALE</b>	<b>TOTAL</b>
ALCOHOL OFFENSE	51	52	103
DISORDERLY CONDUCT	28	4	32
TOBACCO USE	20	10	30
THEFT (MISDEMEANOR)	19	8	27
CRIMINAL DAMAGE TO PROPERTY	15	0	15
ASSAULT	9	3	12
POSSESS PARAPHERNALIA	7	3	10
TRESPASS	8	2	10
POSSESS MARIJUANA	5	3	8
THEFT (PETTY MISDEMEANOR)	5	1	6

## JUVENILE OFFENDER AGE REPORT

2009

<b>AGE</b>	<b>MALE</b>	<b>FEMALE</b>	<b>TOTAL</b>
TEN	0	0	0
ELEVEN	0	0	0
TWELVE	5	0	5
THIRTEEN	6	2	8
FOURTEEN	11	8	19
FIFTEEN	21	14	35
SIXTEEN	29	14	43
SEVENTEEN	43	13	56
EIGHTEEN	0	0	0
<b>TOTALS 2009</b>	<b>115</b>	<b>51</b>	<b>166</b>

## JUVENILE OFFENDER RACE REPORT

2009

<b>AGE</b>	<b>MALE</b>	<b>FEMALE</b>	<b>TOTAL</b>
WHITE	106	45	151
HISPANIC	1	1	2
BLACK	6	3	9
AMERICAN INDIAN	2	2	4
UNKNOWN	0	0	0
ASIAN	0	0	0
<b>TOTALS 2009</b>	<b>115</b>	<b>51</b>	<b>166</b>

## JUVENILE CHARGES 2009

### DELINQUENT/PETTY/TRAFFIC

<b>TYPE</b>	<b>MALE</b>	<b>FEMALE</b>	<b>TOTAL</b>
DELINQUENT OFFENSES	49	9	58
PETTY OFFENSES	161	87	248
TRAFFIC	33	4	37
<b>TOTAL 2009</b>	<b>243</b>	<b>100</b>	<b>343</b>
TOTAL 2008	211	131	342
TOTAL 2007	295	163	458

### JUVENILES PLACED ON PROBATION 2009\*

<b>TYPE</b>	<b>MALE</b>	<b>FEMALE</b>	<b>TOTAL</b>
PETTY MISDEMEANOR	10	3	13
MISDEMEANOR	80	44	124
GROSS MISDEMEANOR	12	1	13
FELONY	13	3	16
<b>TOTAL 2009</b>	<b>115</b>	<b>51</b>	<b>166</b>
TOTAL 2008	90	65	155
TOTAL 2007	153	69	222

\*Unduplicated Offenders Placed on Probation

## JUVENILE SOURCE OF OFFENDERS REPORT

2009

<b>SOURCE OF CLIENT</b>	<b>MALE</b>	<b>FEMALE</b>	<b>TOTAL</b>
BATTLE LAKE POLICE DEPARTMENT	2	0	2
BECKER COUNTY SHERIFF'S OFFICE	1	1	2
CASS COUNTY SHERIFF'S OFFICE	0	2	2
CLAY COUNTY SHERIFF'S OFFICE	2	2	4
DEPARTMENT OF NATURAL RESOURCES	1	0	1
DETROIT LAKES POLICE DEPARTMENT	2	0	2
DOUGLAS COUNTY SHERIFF'S OFFICE	1	3	4
FERGUS FALLS POLICE DEPARTMENT	78	40	118
HENNING POLICE DEPARTMENT	0	2	2
MN HIGHWAY PATROL	3	2	5
NEW YORK MILLS POLICE DEPARTMENT	14	1	15
STATE OF NORTH DAKOTA	7	3	10
OTTER TAIL COUNTY ATTORNEY'S OFFICE	1	1	2
OTTER TAIL COUNTY SHERIFF'S OFFICE	56	20	76
PARKERS PRAIRIE POLICE DEPARTMENT	8	1	9
PELICAN RAPIDS POLICE DEPARTMENT	4	3	7
PERHAM POLICE DEPARTMENT	24	10	34
POLK COUNTY SHERIFF'S OFFICE	1	0	1
POPE COUNTY SHERIFF'S OFFICE	1	0	1
RAMSEY COUNTY SHERIFF'S OFFICE	1	0	1
STEARNS COUNT SHERIFF'S OFFICE	1	0	1
WADENA COUNTY SHERIFF'S OFFICE	2	0	2
WILKIN COUNTY SHERIFF'S OFFICE	5	3	8
<b>TOTAL 2009</b>	<b>215</b>	<b>94</b>	<b>309</b>
<b>TOTAL 2008</b>	<b>187</b>	<b>120</b>	<b>307</b>
<b>TOTAL 2007</b>	<b>259</b>	<b>151</b>	<b>410</b>

## CHEMICAL AWARENESS PROGRAM (CAP)

2009

### JUVENILES

<u>AGE</u>	<u>MALE</u>	<u>FEMALE</u>	<u>TOTAL</u>
12	0	1	1
13	0	2	2
14	2	3	5
15	5	8	13
16	5	4	9
17	16	5	21
18	3	3	6
<b>TOTAL 2009</b>	<b>31</b>	<b>26</b>	<b>57</b>
TOTAL 2008	18	30	48
TOTAL 2007	33	33	66

### JUVENILES REFERRED BY CITY THEY LIVE IN

ASHBY	2
BATTLE LAKE	4
BLUFFTON	1
DALTON	1
DENT	2
FERGUS FALLS	14
HENNING	2
NEW YORK MILLS	7
PELICAN RAPIDS	4
PERHAM	9
RICHVILLE	1
ROTHSAY	1
UNDERWOOD	4
VERGAS	3
WADENA	2
<b>TOTAL</b>	<b>57</b>

**KEYS TO INNERVISION  
 COGNITIVE RESTRUCTURING PROGRAM**

**2009**

**JUVENILES**

<b>AGE</b>	<b>MALE</b>	<b>FEMALE</b>	<b>TOTAL</b>
12	0	0	0
13	0	0	0
14	0	1	1
15	0	0	0
16	0	1	1
17	2	1	3
18	2	1	3
	-----	-----	-----
<b>TOTAL 2009</b>	<b>4</b>	<b>4</b>	<b>8</b>
	=====	=====	=====
TOTAL 2008	7	3	10
TOTAL 2007	16	9	26

**JUVENILES REFERRED BY CITY THEY LIVE IN**

DENT	1
FERGUS FALLS	3
HENNING	1
OTTERTAIL	1
PERHAM	2
	-----
<b>TOTAL</b>	<b>8</b>

## TEEN TOBACCO AWARENESS PROGRAM

2009

AGE	MALE	FEMALE	TOTAL
12	0	0	0
13	1	0	1
14	1	0	1
15	3	5	8
16	2	1	3
17	2	2	4
18	2	0	2
	-----	-----	-----
<b>TOTAL 2009</b>	<b>11</b>	<b>8</b>	<b>19</b>
	=====	=====	=====
TOTAL 2008	23	7	30
TOTAL 2007	13	14	27

### JUVENILES REFERRED BY CITY THEY LIVE IN

CLITHERALL	1
ELIZABETH	1
ERHARD	2
FERGUS FALLS	9
NEW YORK MILLS	3
OTTERTAIL	1
PERHAM	2
	-----
<b>TOTAL</b>	<b>19</b>

## THEFT CLINIC PROGRAM

2009

<u>AGE</u>	<u>MALE</u>	<u>FEMALE</u>	<u>TOTAL</u>
10	1	0	1
11	1	1	2
12	1	0	1
13	2	0	2
14	2	0	2
15	2	4	6
16	6	2	8
17	4	1	5
18	4	1	5
<b>TOTAL 2009</b>	<b>23</b>	<b>9</b>	<b>32</b>
<b>TOTAL 2008</b>	<b>12</b>	<b>4</b>	<b>16</b>
<b>TOTAL 2007</b>	<b>8</b>	<b>11</b>	<b>19</b>

### JUVENILES REFERRED BY CITY THEY LIVE IN

ASHBY	1
BATTLE LAKE	1
CLITHERALL	2
DALTON	1
FERGUS FALLS	11
HENNING	1
NEW YORK MILLS	4
OTTERTAIL	1
PARKERS PRAIRIE	2
PELICAN RAPIDS	5
PERHAM	2
UNDERWOOD	1
<b>TOTAL</b>	<b>32</b>

## ALIVE AT 25 PROGRAM

2009

AGE	MALE	FEMALE	TOTAL
10	0	0	0
11	0	0	0
12	0	0	0
13	0	0	0
14	0	0	0
15	0	0	0
16	0	0	0
17	1	0	1
18	4	0	4
<b>TOTAL 2009</b>	5	0	5
=====			
TOTAL 2008	6	0	6
TOTAL 2007	19	4	23

### JUVENILES REFERRED BY CITY THEY LIVE IN

NEW YORK MILLS	4
PARKERS PRAIRIE	1
<b>TOTAL</b>	<b>5</b>

Note: The Alive at 25 Program accepts offenders age 16 – 24.

## ADULT OFFENSES PLACED UNDER SUPERVISION 2009

OFFENSE	MALE	FEMALE	TOTAL
ALCOHOL OFFENSE	22	7	29
ASSAULT	9	3	12
ASSAULT (DOMESTIC)	19	4	23
BURGLARY	1	0	1
CHILD ENDANGERMENT	1	0	1
CRIMINAL DAMAGE TO PROPERTY	3	0	3
CRIMINAL MISCHIEF	1	0	1
CRIMINAL SEXUAL CONDUCT	4	0	4
CRIMINAL VEHICULAR OPERATION W/INJURY	1	0	1
CRUELTY TO ANIMALS	0	1	1
DISORDERLY CONDUCT	9	0	9
DRIVING AFTER REVOCATION/CANCELLATION	20	1	21
DWI*	78	35	113
ENTERING BUILDING	1	0	1
FALSE NAME TO POLICE	1	1	2
FLEE POLICE	1	0	1
FURNISHING ALCOHOL TO MINORS	3	2	5
HIT AND RUN	0	1	1
INDECENT EXPOSURE	1	0	1
INTERFERE WITH 911 CALL	3	0	3
INTERFERE WITH PRIVACY	2	0	2
ISSUE WORTHLESS CHECKS	1	2	3
OBSTRUCT LEGAL PROCESS	2	1	3
POSSESSION OF DRUG PARAPHERNALIA	1	0	1
POSSESSION OF MARIJUANA	2	0	2
PUBLIC NUISANCE	0	1	1
REFUSE TO SUBMIT TO TESTING	5	1	6
TAMPER WITH MOTOR VEHICLE	1	0	1
THEFT (GROSS MISDEMEANOR)	2	0	2
THEFT (MISDEMEANOR)	2	0	2
TRAFFIC (MISDEMEANOR)	16	5	21
TRESPASS	3	1	4
VIOLATION OF NO CONTACT ORDER	2	0	2
VIOLATION OF ORDER FOR PROTECTION	5	0	5
<b>TOTAL 2009</b>	<b>222</b>	<b>66</b>	<b>288</b>
<b>TOTAL 2008</b>	<b>238</b>	<b>73</b>	<b>311</b>
<b>TOTAL 2007</b>	<b>258</b>	<b>61</b>	<b>319</b>

\*Includes DWI Court Offenders

DWI COURT

2009

<u>OFFENSE</u>	<u>MALE</u>	<u>FEMALE</u>	<u>TOTAL</u>
DWI IN THE FIRST DEGREE (FELONY)	3	1	4
DWI IN THE SECOND DEGREE (GROSS MISD)	11	7	18
DWI IN THE THIRD DEGREE (GROSS MISD)	<u>2</u>	<u>1</u>	<u>3</u>
<b>TOTAL 2009</b>	<b>16</b>	<b>9</b>	<b>25</b>

**AGE OF OFFENDER:**

20-29	7	1	8
30-39	1	2	3
40-49	3	3	6
50-59	3	2	5
60+	<u>2</u>	<u>1</u>	<u>3</u>
	<b>16</b>	<b>9</b>	<b>25</b>

GRADUATION FROM DWI COURT PROGRAM:	3	1	4
UNSUCCESSFUL TERMINATION FROM PROGRAM:	1	1	2

**CITY OF RESIDENCE**

DALTON	2
DENT	1
ERHARD	2
FERGUS FALLS	6
NEW YORK MILLS	1
OTTERTAIL	1
PELICAN RAPIDS	2
PERHAM	6
ROTHSAY	1
UNDERWOOD	1
VERGAS	<u>2</u>
	<b>25</b>

AVERAGE DWI COURT PARTICIPANT STARTING THE PROGRAM:

	<u>MALE</u>	<u>FEMALE</u>
DWI COURT REFERRAL OFFENSE	GROSS MISD	GROSS MISD
NUMBER OF DWI'S	2.3	2.0
AGE	40	44
CHEMICALLY DEPENDENT	YES	YES
EMPLOYMENT STATUS	FULL-TIME	UNEMPLOYED
MARITAL STATUS	SINGLE	DIVORCED
NUMBER OF CHILDREN	1.7	1.8

## PRE-TRIAL RELEASE SUPERVISION

2009

<b>PRE-TRIAL RELEASE SUPERVISION</b>	<b>MALE</b>	<b>FEMALE</b>	<b>TOTAL</b>
RANDOM TESTING	69	12	81
REMOTE ELECTRONIC ALCOHOL MONITORING	47	23	70
<b>TOTAL 2009</b>	<b>116</b>	<b>35</b>	<b>151</b>

21.43% of the electronic monitoring and 24.39% of the random testing cases resulting in violation reports by Probation Officers.

**PRIMARY OFFENSES CHARGED:**

ARSON	1
ASSAULT	8
ASSAULT (DOMESTIC)	11
CRIMINAL SEXUAL CONDUCT IN THE FIFTH DEGREE	2
CRIMINAL VEHICULAR OPERATION	1
DRIVING AFTER CANCELLATION	6
DUI IN THE SECOND DEGREE	31
DUI IN THE THIRD DEGREE	62
DUI IN THE FOURTH DEGREE	7
FURNISH ALCOHOL TO MINORS	4
INDECENT EXPOSURE	1
INTERFERE WITH 911 CALL	3
OBSTRUCTING	3
REFUSE TO SUBMIT TO TESTING	7
VIOLATE NO CONTACT ORDER	1
VIOLATE ORDER FOR PROTECTION	<u>3</u>
	<b>151</b>

<b>AGE OF OFFENDER:</b>	<b>MALE</b>	<b>FEMALE</b>	<b>TOTAL</b>
18-29	41	18	59
30-39	30	7	37
40-49	26	4	30
50-59	13	5	18
60+	<u>6</u>	<u>1</u>	<u>7</u>
	<b>116</b>	<b>35</b>	<b>151</b>

## ADULT OFFENDER AGE REPORT

2009

<b>AGE</b>	<b>MISD</b>	<b>GROSS MISD</b>	<b>TOTAL</b>
17 – 20	45	11	56
21 – 30	30	52	82
31 – 40	11	30	41
41 – 50	15	24	39
51 – 60	9	11	20
61+	3	6	9
<b>TOTALS 2009</b>	<b>113</b>	<b>134</b>	<b>247</b>

## ADULT OFFENDER RACE REPORT

2009

<b>TYPE</b>	<b>MISD</b>	<b>GROSS MISD</b>	<b>TOTAL</b>
WHITE	104	126	230
HISPANIC	3	3	6
BLACK	3	0	3
AMERICAN INDIAN	3	5	8
ASIAN	0	0	0
<b>TOTAL 2008</b>	<b>113</b>	<b>134</b>	<b>247</b>

OTTER TAIL COUNTY  
PRE-TRIAL BAIL EVALUATIONS

2009

	MALE	FEMALE	TOTAL
PRE-TRIAL BAIL EVALUATIONS 2009	70	7	77
COMPLETED 2008	42	6	48

OFFENSES REQUIRING JUDICIAL REVIEW

ASSAULT IN THE FIFTH DEGREE			11
DOMESTIC ASSAULT			44
INTERFERE WITH 911 CALL			4
VIOLATION OF NO CONTACT ORDER			4
VIOLATION OF ORDER FOR PROTECTION			14
			<hr/> 77

OTTER TAIL COUNTY  
DRIVERS LICENSE REINSTATEMENT PROGRAM

2009

	MALE	FEMALE	TOTAL
COURT REFERRALS TO PROBATION	13	2	15

  1   Defendants chose not to participate in the Driver's License program.

  8   Received Driver's License.

OTTER TAIL COUNTY  
PROBATION PROGRAMS FOR 2009

**JUVENILE OUT-OF-HOME PLACEMENTS:**

Out-of-Home Placements: 47 (2008 = 41; 2007 = 40)

Juvenile Sex Offender Specific Treatment: 3 (2008 = 1; 2007 = 7)

Shelter Care Placements: 17 (2008 = 8; 2007 = 19)

Juveniles Held in Secure Detention: 57 (2008 = 45; 2007 = 63)

Average Number of Days Held in Secure Detention: 6.19 (2008 = 6.44; 2007 = 7.02)

Delinquent Juveniles Held in Temporary Hold Facility: 14 (2008 = 6; 2007 = 17)

Cost of Out of-Home Placements: \$751,487.42 (2008 = \$914,066.27; 2007 = \$959,021.67)

Cost of Secure Detention: \$50,752.00 (Does not include deficit payment of \$23,988.00)  
(2008 = \$53,321.00; 2007 = \$71,848.00)

**FINES:**

Total Number of Juveniles Fined: 141 (2008 = 115; 2007 = 140)

Total Amount of Juvenile Fines Assessed: \$12,275.00 (2008 = \$9,275.00; 2007 = \$11,588.00)

Total Amount of Juvenile Fines Collected: \$5,983.00

A total of \$2,984.00 in fines was worked off through community service work.

**RESTITUTION:**

Total Number of Juveniles ordered to pay restitution: 35

Total Amount of Restitution Ordered: \$17,284.00

Total Amount of Restitution Paid: \$11,369.00

**JUVENILE JAIL REMOVAL PROJECT:**

Number of Juveniles Held in the Temporary Hold Facility:

Delinquents: 14 (2008 = 6; 2007 = 17)

CHIPS\*: 0 (2008 = 0; 2007 = 0)

A total of 14 juveniles were held in the Temporary Hold Facility.

\*Child In Need of Protective Services

**JUVENILE RESTITUTION WORK PROGRAM:**

Number of Juveniles Referred to Program: 10

Number of Hours Worked: 313.29

Amount Paid Out to Victims: \$1,879.72

**PROBATION RESTRUCTURE/MODIFICATION 2009**

Number of Probation Case Modifications approved: 0 (2008 = 2, 2007 = 5)

Additional Community Service Hours Imposed: 0 (2008 = 16, 2007 = 44)

Additional Chemical Dependency Evaluations Assigned: 0 (2008 = 0, 2007 = 0)

Additional Random Urinalysis Testing Authorized: 0 (2008 = 1, 2007 = 1)

**COMMUNITY SERVICE:**

238 Juveniles:	4,595.0	Community Service Work Hours Assigned
	3,410.0	Community Service Work Hours Completed in Otter Tail County
	476.0	Community Service Work Hours Completed in Other Counties

53 Adults:	2,482.0	Community Service Work Hours Assigned
	1,473.0	Community Service Work Hours Completed in Otter Tail County
	353.0	Community Service Work Hours Completed in Other Counties

A total of 7,077.0 community service work hours were assigned during 2009. A total of 4,883.0 community service work hours were supervised in Otter Tail County worksites. A total of 829.0 community service hours were supervised for Otter Tail County by another county. (2008 = 5,617.0 hours assigned; 2007 = 7,860.00 hours assigned)

Department of Corrections Community Service Work Supervised by Otter Tail County Community Service Specialist:

21 Adults:	2,539.50	Community Service Work Hours Assigned
	1,147.75	Community Service Work Hours Completed in Otter Tail County

**DISTRICT COURT REFERRALS:**

Pre-Sentence Investigations Conducted: 33 (2008 = 43; 2007 = 58)

Gross Misdemeanor Bond Studies: 0 (2008 = 1; 2007 = 1)

Domestic Abuse Investigations: 40 (2008 = 36; 2007 = 54)

Accepted into Misdemeanant Diversion Program: 9 (2008 = 9; 2007 = 4)

## PROBATION SUPERVISION FEES 2009

	Amount Assessed	Amount Paid	
Adult Gross Misdemeanor Supervision Fees	\$4,675.00	\$3,425.00	
Adult Misdemeanor Supervision Fees	3,300.00	1,905.00	
Adult Transfer-In Gross Misdemeanor Supervision Fees	1,650.00	2,140.00	
Adult Transfer-In Misdemeanor Supervision Fees	500.00	525.00	
Adult Transfer Out Fees	500.00	350.00	
Community Service Work Supervision Fees	500.00	250.00	
Driver's License Reinstatement Fees	350.00	100.00	
DWI Court	450.00	150.00	
Pre-Trial Conditional Release Fees	9,100.00	6,195.00	
Adult Informal, Unsupervised Probation Fees	3,100.00	2,490.00	
Misdemeanor Diversion Fees	400.00	150.00	
Juvenile Petty Offender Fees	2,100.00	1,500.00	
Juvenile Delinquency Fees (Findings Withheld)	255.00	225.00	
Juvenile Delinquency Fees	<u>2,500.00</u>	<u>1,900.00</u>	
	\$29,380.00	\$21,305.00	84.21%

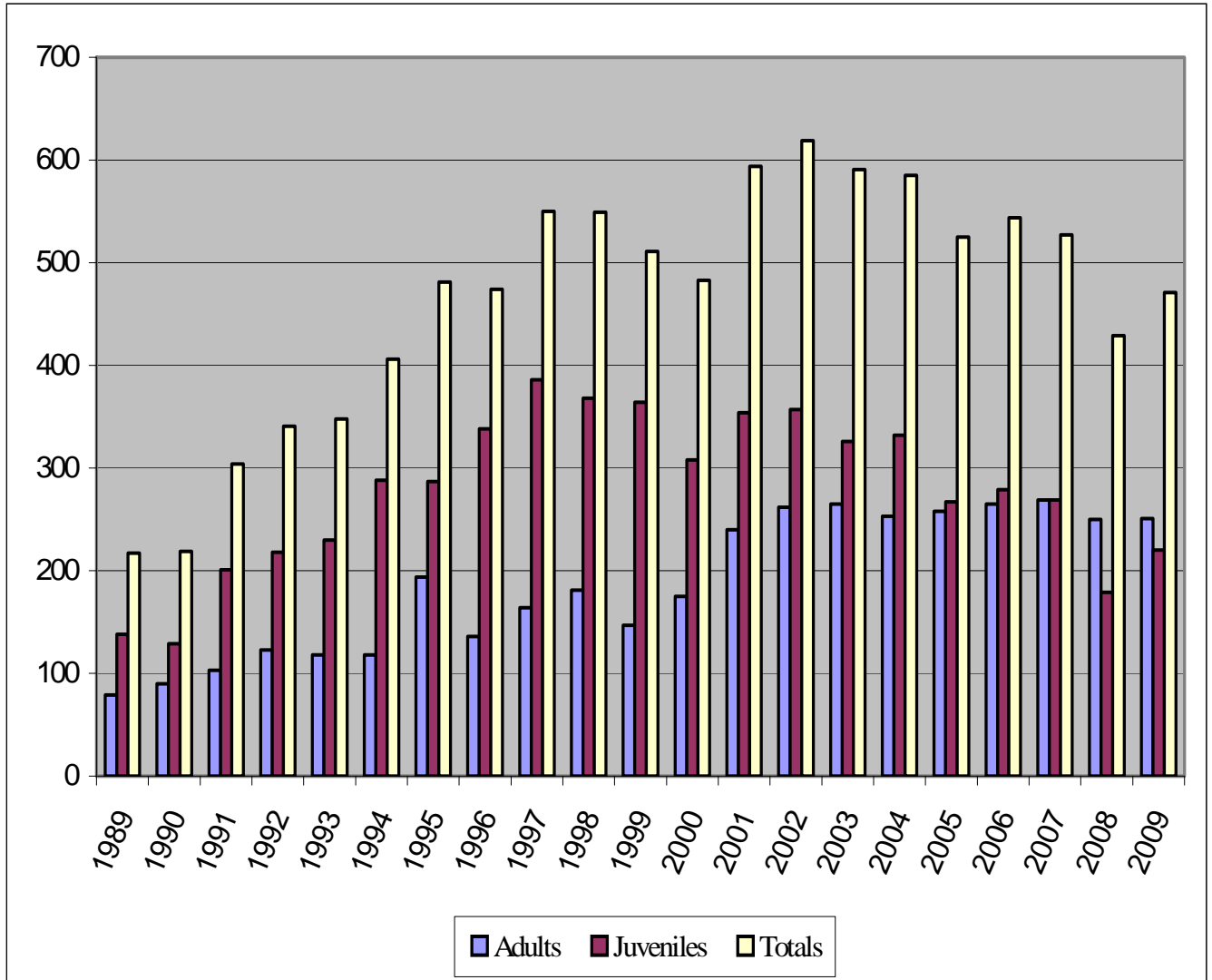
Number of cases with fees waived: 51 cases in the amount of \$3,435.00.

### 2009 Annual Intakes

Juviles: <u>220</u>	Number Drug/Alcohol related: <u>81</u>	Percentage: <u>36.82%</u>
Adults: <u>251</u>	Number Drug/Alcohol related: <u>181</u>	Percentage: <u>72.11%</u>

	<b>ADULTS</b>	<b>JUVENILES</b>	<b>TOTALS</b>
<b>1990</b>	90	129	<b>219</b>
<b>1991</b>	103	201	<b>304</b>
<b>1992</b>	123	218	<b>341</b>
<b>1993</b>	118	230	<b>348</b>
<b>1994</b>	118	288	<b>406</b>
<b>1995</b>	194	287	<b>481</b>
<b>1996</b>	136	338	<b>474</b>
<b>1997</b>	164	386	<b>550</b>
<b>1998</b>	181	368	<b>549</b>
<b>1999</b>	147	364	<b>511</b>
<b>2000</b>	175	308	<b>483</b>
<b>2001</b>	240	354	<b>594</b>
<b>2002</b>	262	357	<b>619</b>
<b>2003</b>	265	326	<b>591</b>
<b>2004</b>	253	332	<b>585</b>
<b>2005</b>	258	267	<b>525</b>
<b>2006</b>	265	279	<b>544</b>
<b>2007</b>	269	269	<b>527</b>
<b>2008</b>	250	179	<b>429</b>
<b>2009</b>	251	220	<b>471</b>

### Otter Tail County Probation Adult – Juvenile Annual Intakes



	<u>2009</u>	<u>2008</u>	<u>2007</u>	<u>2006</u>	<u>2005</u>	<u>2004</u>	<u>2003</u>	<u>2002</u>	<u>2001</u>	<u>2000</u>	<u>1999</u>	<u>1998</u>	<u>1997</u>	<u>1996</u>	<u>1995</u>	<u>1994</u>	<u>1993</u>
<b>JANUARY</b>	407	389	376	324	322	341	389	384	318	312	351	313	308	280	279	234	280
<b>FEBRUARY</b>	403	375	362	327	314	335	375	396	327	310	352	326	310	305	282	249	284
<b>MARCH</b>	397	385	372	330	305	320	345	382	312	322	344	325	310	297	299	244	289
<b>APRIL</b>	426	389	371	326	312	328	333	364	319	330	330	325	312	315	306	254	291
<b>MAY</b>	416	374	381	324	321	321	335	356	322	346	307	328	311	319	299	262	317
<b>JUNE</b>	400	356	354	317	321	333	320	350	336	346	315	338	295	317	285	260	279
<b>JULY</b>	395	352	339	317	294	324	323	363	337	326	307	349	329	308	278	261	281
<b>AUGUST</b>	376	334	352	315	309	330	331	379	327	319	301	326	318	327	265	257	253
<b>SEPTEMBER</b>	370	345	380	318	302	335	313	383	329	313	313	330	332	317	275	237	256
<b>OCTOBER</b>	364	368	373	340	319	344	333	380	344	327	312	328	325	305	295	237	273
<b>NOVEMBER</b>	357	371	389	353	313	347	336	392	353	323	295	338	333	317	275	239	260
<b>DECEMBER</b>	365	373	386	362	307	338	336	406	354	313	304	355	310	308	255	263	237
<b>AVERAGE MONTHLY CASELOAD</b>	<b>390</b>	<b>368</b>	<b>370</b>	<b>329</b>	<b>312</b>	<b>333</b>	<b>339</b>	<b>378</b>	<b>332</b>	<b>324</b>	<b>319</b>	<b>332</b>	<b>316</b>	<b>310</b>	<b>283</b>	<b>250</b>	<b>275</b>

Adult-Juvenile Average Monthly Caseload

