

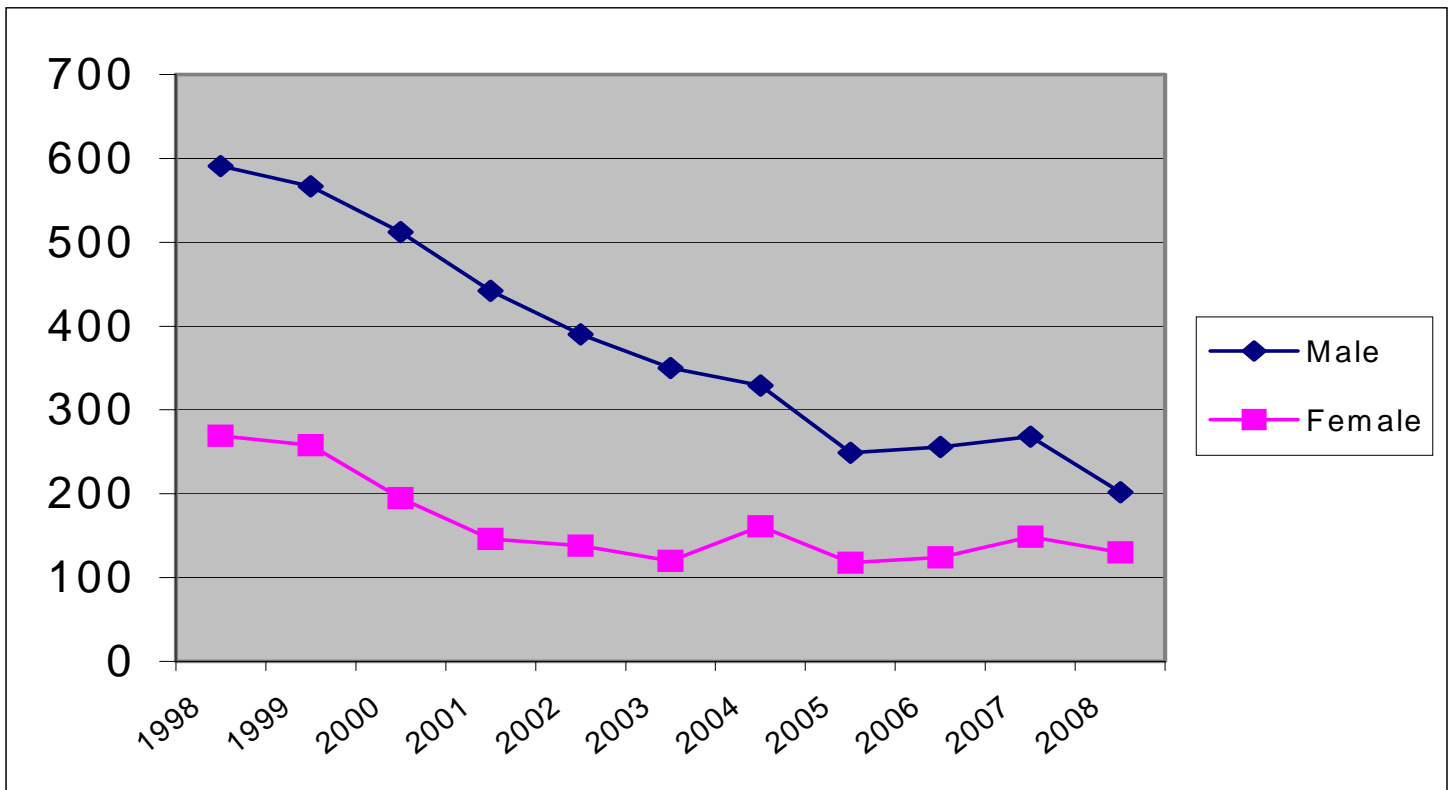
JUVENILE OFFENSES CHARGED 2008

DELINQUENT AND PETTY OFFENSES

OFFENSE	MALE	FEMALE	TOTAL
ALCOHOL OFFENSE	35	50	85
ASSAULT	13	6	19
BURGLARY	7	1	8
CONTROLLED SUBSTANCE CRIME	2	2	4
CRIMINAL DAMAGE TO PROPERTY	11	3	14
CRIMINAL VEHICULAR OPERATION	0	1	1
DISORDERLY CONDUCT	16	9	25
DRINK AND DRIVE	1	1	2
FALSE NAME TO POLICE	0	1	1
FURNISHING ALCOHOL TO MINORS	0	2	2
INDECENT EXPOSURE	1	0	1
INTERFERE WITH 911 CALL	1	0	1
LITTERING	1	0	1
OPEN BOTTLE	0	2	2
POSSESSION OF DRUG PARAPHERNALIA	10	4	14
POSSESSION OF MARIJUANA	9	3	12
RECEIVING STOLEN PROPERTY	2	0	2
SHOPLIFTING	2	4	6
TAMPER WITH MOTOR VEHICLE	6	1	7
THEFT (PETTY MISDEMEANOR)	24	2	26
THEFT (MISDEMEANOR)	10	14	24
THEFT (GROSS MISDEMEANOR)	3	0	3
THEFT (FELONY)	3	0	3
TOBACCO OFFENSE	42	17	59
TRESPASS	2	6	8
TRUANCY	0	1	1
WEAPONS OFFENSE	1	0	1
TOTAL 2008	202	130	332
TOTAL 2007	268	149	417
TOTAL 2006	256	124	380

JUVENILE OFFENSES CHARGED 1998 - 2008

DELINQUENT AND PETTY OFFENSES



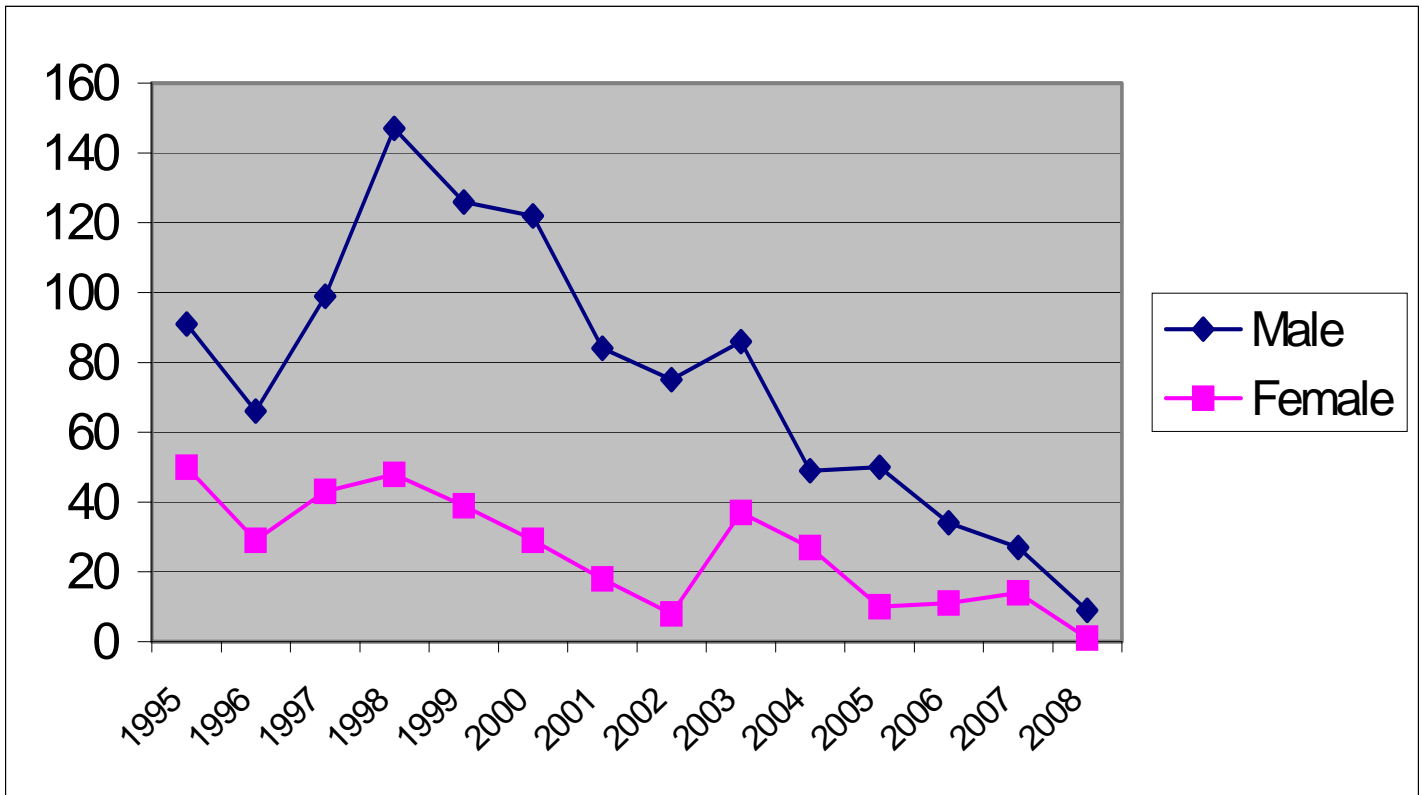
JUVENILE OFFENSES CHARGED 2008

TRAFFIC

OFFENSE	MALE	FEMALE	TOTAL
CARELESS/RECKLESS DRIVING	3	1	4
HIT AND RUN	2	0	2
MISCELLANEOUS TRAFFIC OFFENSES	2	0	2
NO DRIVER'S LICENSE	1	0	1
NO INSURANCE	1	0	1
TOTAL 2008	9	1	10
	=====	=====	=====
TOTAL 2007	27	14	41
TOTAL 2006	34	11	45

JUVENILE OFFENSES CHARGED 1998 - 2008

TRAFFIC



TOP JUVENILE OFFENSES

2008

OFFENSE	MALE	FEMALE	TOTAL
ALCOHOL OFFENSE	35	50	85
TOBACCO USE	42	17	59
THEFT (PETTY MISDEMEANOR)	24	2	26
DISORDERLY CONDUCT	16	9	25
THEFT (MISDEMEANOR)	10	14	24
ASSAULT	13	6	19
CRIMINAL DAMAGE TO PROPERTY	11	3	14
POSSESS PARAPHERNALIA	10	4	14
POSSESS MARIJUANA	9	3	12
BURGLARY	7	1	8

JUVENILE OFFENDER AGE REPORT

2008

<u>AGE</u>	<u>MALE</u>	<u>FEMALE</u>	<u>TOTAL</u>
TEN	2	0	2
ELEVEN	0	0	0
TWELVE	5	3	8
THIRTEEN	4	2	6
FOURTEEN	11	11	22
FIFTEEN	12	11	23
SIXTEEN	28	12	40
SEVENTEEN	28	26	54
EIGHTEEN	0	0	0
TOTALS 2008	90	65	155

JUVENILE OFFENDER RACE REPORT

2008

<u>AGE</u>	<u>MALE</u>	<u>FEMALE</u>	<u>TOTAL</u>
WHITE	82	56	138
HISPANIC	3	4	7
BLACK	2	1	3
AMERICAN INDIAN	3	4	7
UNKNOWN	0	0	0
ASIAN	0	0	0
TOTALS 2008	90	65	155

JUVENILE CHARGES FILED 2008
DELINQUENT/PETTY/TRAFFIC

TYPE	MALE	FEMALE	TOTAL
DELINQUENT OFFENSES	56	12	68
PETTY OFFENSES	146	118	264
TRAFFIC	9	1	10
TOTAL 2008	211	131	342
TOTAL 2007	295	163	458
TOTAL 2006	290	135	425

JUVENILES PLACED ON PROBATION 2008*

TYPE	MALE	FEMALE	TOTAL
PETTY MISDEMEANOR	13	7	20
MISDEMEANOR	64	55	119
GROSS MISDEMEANOR	3	0	3
FELONY	10	3	13
TOTAL 2008	90	65	155
TOTAL 2007	153	69	222
TOTAL 2006	148	75	223

*Unduplicated Offenders Placed on Probation

JUVENILE SOURCE OF OFFENDERS REPORT

2008

SOURCE OF CLIENT	MALE	FEMALE	TOTAL
BATTLE LAKE POLICE DEPARTMENT	2	0	2
BECKER COUNTY SHERIFF'S OFFICE	4	2	6
CLAY COUNTY SHERIFF'S OFFICE	3	1	4
DETROIT LAKES POLICE DEPARTMENT	3	5	8
DOUGLAS COUNTY SHERIFF'S OFFICE	3	1	4
FERGUS FALLS POLICE DEPARTMENT	73	38	111
FRAZEE POLICE DEPARTMENT	1	0	1
GRANT COUNTY SHERIFF'S OFFICE	0	2	2
HENNING POLICE DEPARTMENT	4	1	5
ITASCA COUNTY SHERIFF'S OFFICE	0	1	1
MN DNR	1	0	1
MN HIGHWAY PATROL	2	6	8
NEW YORK MILLS POLICE DEPARTMENT	25	10	35
STATE OF NORTH DAKOTA	2	4	6
OTTER TAIL COUNTY SHERIFF'S OFFICE	35	20	55
PARKERS PRAIRIE POLICE DEPARTMENT	10	3	13
PELICAN RAPIDS POLICE DEPARTMENT	3	4	7
PERHAM POLICE DEPARTMENT	15	18	33
TODD COUNTY SHERIFF'S OFFICE	0	1	1
STATE OF VIRGINIA	0	1	1
WADENA COUNTY SHERIFF'S OFFICE	1	1	2
WASHINGTON COUNTY SHERIFF'S OFFICE	0	1	1
TOTAL 2008	187	120	307
TOTAL 2007	259	151	410
TOTAL 2006	261	120	381

CHANGE DIRECTION - DRUG EDUCATION PROGRAM

2008

JUVENILES

<u>AGE</u>	<u>MALE</u>	<u>FEMALE</u>	<u>TOTAL</u>
12	0	0	0
13	0	0	0
14	1	0	1
15	1	2	3
16	2	4	6
17	9	14	23
18	5	10	15
	<hr/>	<hr/>	<hr/>
TOTAL 2008	18	30	48
	<hr/> <hr/>	<hr/> <hr/>	<hr/> <hr/>
TOTAL 2007	33	33	66
TOTAL 2006	31	21	52

JUVENILES REFERRED BY CITY THEY LIVE IN

BATTLE LAKE	1
CLITHERALL	1
DALTON	2
DENT	1
ELIZABETH	1
ERHARD	1
FERGUS FALLS	22
HENNING	2
NEW YORK MILLS	2
OTTERTAIL	2
PELICAN RAPIDS	6
PERHAM	5
RICHVILLE	1
UNDERWOOD	1
	<hr/>
TOTAL	48

KEYS TO INNERVISION
 COGNITIVE RESTRUCTURING PROGRAM

2008

JUVENILES

<u>AGE</u>	<u>MALE</u>	<u>FEMALE</u>	<u>TOTAL</u>
12	0	0	0
13	0	2	2
14	1	0	1
15	1	0	1
16	1	1	2
17	0	0	0
18	4	0	4
	-----	-----	-----
TOTAL 2008	7	3	10
	=====	=====	=====
TOTAL 2007	16	9	26
TOTAL 2006	13	5	18

JUVENILES REFERRED BY CITY THEY LIVE IN

DENT	1
ELIZABETH	1
FERGUS FALLS	5
PERHAM	2
RICHVILLE	1

TOTAL	10

TEEN TOBACCO AWARENESS PROGRAM

2008

<u>AGE</u>	<u>MALE</u>	<u>FEMALE</u>	<u>TOTAL</u>
12	1	0	1
13	2	0	2
14	4	2	6
15	3	3	6
16	5	2	7
17	5	0	5
18	3	0	3
	-----	-----	-----
TOTAL 2008	23	7	30
	=====	=====	=====
TOTAL 2007	13	14	27
TOTAL 2006	14	8	22

JUVENILES REFERRED BY CITY THEY LIVE IN

BLUFFTON	1
DENT	2
FRAZEE	1
FERGUS FALLS	13
NEW YORK MILLS	5
OTTERTAIL	3
PERHAM	2
RICHVILLE	1
UNDERWOOD	1
VERGAS	1

TOTAL	30

THEFT CLINIC PROGRAM

2008

AGE	MALE	FEMALE	TOTAL
10	0	1	1
11	0	0	0
12	1	0	1
13	2	0	2
14	2	0	2
15	2	0	2
16	2	1	3
17	1	2	3
18	2	0	2
TOTAL 2008	12	4	16
	=====	=====	=====
TOTAL 2007	8	11	19
TOTAL 2006	16	11	27

JUVENILES REFERRED BY CITY THEY LIVE IN

BATTLE LAKE	1
FERGUS FALLS	7
NEW YORK MILLS	3
PARKERS PRAIRIE	1
PELICAN RAPIDS	2
PERHAM	2
TOTAL	16

ALIVE AT 25 PROGRAM

2008

AGE	MALE	FEMALE	TOTAL
10	0	0	0
11	0	0	0
12	0	0	0
13	0	0	0
14	0	0	0
15	0	0	0
16	0	0	0
17	3	0	3
18	3	0	3
TOTAL 2008	6	0	6
	=====	=====	=====
TOTAL 2007	19	4	23
TOTAL 2006	15	4	19

JUVENILES REFERRED BY CITY THEY LIVE IN

ERHARD	1
HENNING	1
NEW YORK MILLS	1
PARKERS PRAIRIE	2
UNDERWOOD	1
TOTAL	6

Note: The Alive at 25 Program accepts offenders age 16 – 24.

ADULT OFFENSES PLACED UNDER SUPERVISION 2008

OFFENSE	MALE	FEMALE	TOTAL
ALCOHOL OFFENSE	10	4	14
ASSAULT	13	1	14
ASSAULT (DOMESTIC)	22	2	24
BURGLARY	2	0	2
CHILD ENDANGERMENT	4	1	5
CHILD NEGLECT	1	0	1
CONTEMPT OF COURT	0	1	1
CONTRIBUTE TO DELINQUENCY OF MINOR	2	0	2
CRIMINAL DAMAGE TO PROPERTY	5	1	6
CRIMINAL SEXUAL CONDUCT	3	0	3
CRIMINAL VEHICULAR OPERATION	1	0	1
DISORDERLY CONDUCT	2	1	3
DRIVING AFTER REVOCATION/CANCELLATION	27	9	36
DWI*	79	30	109
ESCAPE FROM CUSTODY	1	0	1
FALSELY REPORT CRIME	1	0	1
FLEE POLICE	1	0	1
FORGERY	0	1	1
FURNISHING ALCOHOL TO MINOR	1	1	2
INDECENT EXPOSURE	1	0	1
INGEST TOXIC SUBSTANCES	1	0	1
INTERFERE WITH 911 CALL	7	0	7
ISSUE WORTHLESS CHECKS	2	0	2
OBSTRUCTION OF JUSTICE	1	3	4
OPEN BOTTLE	1	0	1
POSSESSION OF DRUG PARAPHERNALIA	2	0	2
POSSESSION OF MARIJUANA	3	0	3
RECEIVE STOLEN PROPERTY	2	0	2
REFUSE TO SUBMIT TO TESTING	4	1	5
SHOPLIFTING	0	1	1
TERRORISTIC THREATS	1	0	1
THEFT (GROSS MISDEMEANOR)	4	3	7
THEFT (MISDEMEANOR)	3	3	6
THEFT BY CHECK	0	2	2
TRAFFIC (MISDEMEANOR)	22	5	27
TRANSACTION CARD FRAUD	0	1	1
TRESPASS	0	1	1
VETERINARIAN PRACTICE WITHOUT LICENSE	0	1	1
VIOLATION OF CONDITIONS OF RELEASE	2	0	2
VIOLATION OF NO CONTACT ORDER	1	0	1
VIOLATION OF ORDER FOR PROTECTION	5	0	5
WEAPONS CHARGE	1	0	1
TOTAL 2008	238	73	311
	=====	=====	=====
TOTAL 2007	258	61	319
TOTAL 2006	207	72	279

*Includes DWI Court Offenders

DWI COURT

2008

<u>OFFENSE</u>	<u>MALE</u>	<u>FEMALE</u>	<u>TOTAL</u>
DWI IN THE FIRST DEGREE (FELONY)	1	1	2
DWI IN THE SECOND DEGREE (GROSS MISD)	8	4	12
DWI IN THE THIRD DEGREE (GROSS MISD)	<u>1</u>	<u>1</u>	<u>2</u>
TOTAL 2008	10	6	16

AGE OF OFFENDER:

20-29	6	0	6
30-39	0	2	2
40-49	2	2	4
50-59	1	2	3
60+	<u>1</u>	<u>0</u>	<u>1</u>
	10	6	16

CITY OF RESIDENCE

VERGAS	2
ERHARD	1
NEW YORK MILLS	1
DALTON	1
DENT	1
PERHAM	4
PELICAN RAPIDS	1
FERGUS FALLS	<u>5</u>
	16

AVERAGE DWI COURT PARTICIPANT STARTING THE PROGRAM:

	<u>MALE</u>	<u>FEMALE</u>
DWI COURT REFERRAL OFFENSE	GROSS MISD	GROSS MISD
NUMBER OF DWI'S	3.2	3.0
AGE	36	43
CHEMICALLY DEPENDENT	YES	YES
EMPLOYMENT STATUS	FULL-TIME	UNEMPLOYED
MARITAL STATUS	SINGLE	DIVORCED
NUMBER OF CHILDREN	1.8	2.3

PRE-TRIAL RELEASE SUPERVISION

2008

PRE-TRIAL RELEASE SUPERVISION	MALE	FEMALE	TOTAL
RANDOM TESTING	50	13	63
REMOTE ELECTRONIC ALCOHOL MONITORING	<u>74</u>	<u>32</u>	<u>106</u>
TOTAL 2008	124	45	169

14.15% of the electronic monitoring and 14.29% of the random testing cases resulting in violation reports by Probation Officers.

PRIMARY OFFENSES CHARGED:

ASSAULT	4
ASSAULT (DOMESTIC)	11
CONTRIBUTE TO DELINQUENCY OF MINOR	1
CRIMINAL DAMAGE TO PROPERTY	1
DRIVING AFTER CANCELLATION	3
DUI IN THE SECOND DEGREE	45
DUI IN THE THIRD DEGREE	79
DUI IN THE FOURTH DEGREE	4
INTERFERE WITH 911 CALL	4
REFUSE TO SUBMIT TO TESTING	16
THEFT	<u>1</u>
	169

AGE OF OFFENDER:	MALE	FEMALE	TOTAL
18-29	52	19	71
30-39	23	8	31
40-49	23	11	34
50-59	16	6	22
60+	<u>10</u>	<u>1</u>	<u>11</u>
	124	45	169

ADULT OFFENDER AGE REPORT

2008

AGE	MISD	GROSS MISD	TOTAL
18 – 20	28	16	44
21 – 30	24	66	90
31 – 40	15	31	46
41 – 50	10	33	43
51 – 60	5	11	16
61+	1	4	5
TOTALS 2008	83	161	244

ADULT OFFENDER RACE REPORT

2008

TYPE	MISD	GROSS MISD	TOTAL
WHITE	73	148	221
HISPANIC	3	1	4
BLACK	3	6	9
AMERICAN INDIAN	3	6	9
ASIAN	1	0	1
TOTAL 2008	83	161	244

**OTTER TAIL COUNTY
 PRE-TRIAL BAIL EVALUATIONS**

2008

	MALE	FEMALE	TOTAL
PRE-TRIAL BAIL EVALUATIONS 2008	42	6	48
COMPLETED 2007	71	8	79

OFFENSES REQUIRING JUDICIAL REVIEW

ASSAULT IN THE FIFTH DEGREE	5
DOMESTIC ASSAULT	33
INTERFERE WITH 911 CALL	5
VIOLATION OF ORDER FOR PROTECTION	9
	52

**OTTER TAIL COUNTY
 DRIVERS LICENSE REINSTATEMENT PROGRAM**

2008

	MALE	FEMALE	TOTAL
COURT REFERRALS TO PROBATION	10	2	12

6 Defendants chose not to participate in the Driver's License program.

6 Received Driver's License.

**OTTER TAIL COUNTY
 PROBATION PROGRAMS FOR 2008**

JUVENILE OUT-OF-HOME PLACEMENTS:

Out-of-Home Placements: 41 (2007 = 40; 2006 = 41)

Juvenile Sex Offender Specific Treatment: 1 (2007 = 7; 2006 = 0)

Shelter Care Placements: 8 (2007 = 19; 2006 = 10)

Juveniles Held in Secure Detention: 45 (2007 = 63; 2006 = 56)

Average Number of Days Held in Secure Detention: 6.44 (2007 = 7.02; 2006 = 8.66)

Delinquent Juveniles Held in Temporary Hold Facility: 6 (2007 = 17; 2006 = 15)

Cost of Out of-Home Placements: \$914,066.27 (2007 = \$959,021.67; 2006 = \$746,957.00)

Cost of Secure Detention: \$53,321.00 (2007 = \$71,848.00; 2006 = \$85,570.00)

FINES:

Total Number of Juveniles Fined: 115 (2007 = 140; 2006 = 151)

Total Amount of Juvenile Fines Assessed: \$9,275.00 (2007 = \$11,588.00; 2006 = \$14,244.00)

Total Amount of Juvenile Fines Collected: \$5,610.00

A total of \$1,184.00 in fines was worked off through community service work.

RESTITUTION:

Total Number of Juveniles ordered to pay restitution: 44

Total Amount of Restitution Ordered: \$19,750.00

Total Amount of Restitution Paid: \$7,488.00

JUVENILE JAIL REMOVAL PROJECT:

Number of Juveniles Held in the Temporary Hold Facility:

Delinquents: 6 (2007 = 17; 2006 = 15)

CHIPS*: 0 (2007 = 0; 2006 = 0)

A total of 6 juveniles were held in the Temporary Hold Facility.

*Child In Need of Protective Services

(CONTINUED)

JUVENILE RESTITUTION WORK PROGRAM:

Number of Juveniles Referred to Program: 18

Number of Hours Worked: 402

Amount Paid Out to Victims: \$2,411.64

PROBATION RESTRUCTURE/MODIFICATION 2008

Number of Probation Case Modifications approved: 2 (2007 = 5, 2006 = 7)

Additional Community Service Hours Imposed: 16 (2007 = 44, 2006 = 84)

Additional Chemical Dependency Evaluations Assigned: 0 (2007 = 0, 2006 = 1)

Additional Random Urinalysis Testing Authorized: 1 (2007 = 1, 2006 = 1)

COMMUNITY SERVICE:

208 Juveniles:	4,120.0	Community Service Work Hours Assigned
	2,758.0	Community Service Work Hours Completed in Otter Tail County
	314.0	Community Service Work Hours Completed in Other Counties
47 Adults:	1,497.0	Community Service Work Hours Assigned
	1,090.0	Community Service Work Hours Completed in Otter Tail County
	124.0	Community Service Work Hours Completed in Other Counties

A total of 5,617.0 community service work hours were assigned during 2008. A total of 3,848.0 community service work hours were supervised in Otter Tail County worksites. A total of 438.0 community service hours were supervised for Otter Tail County by another county. (2007 = 7,860.00 hours assigned; 2006 = 8,302.00 hours assigned)

Department of Corrections Community Service Work Supervised by Otter Tail County Community Service Specialist:

26 Adults:	3,302.50	Community Service Work Hours Assigned
	1,360.25	Community Service Work Hours Completed in Otter Tail County

DISTRICT COURT REFERRALS:

Investigations Conducted: 43 (2007 = 58; 2006 = 62)

Gross Misdemeanor Bond Studies: 1 (2007 = 1; 2006 = 3)

Domestic Abuse Investigations: 36 (2007 = 54; 2006 = 64)

Accepted into Misdemeanant Diversion Program: 9 (2007 = 4; 2006 = 4)

PROBATION SUPERVISION FEES 2008

	Amount Assessed	Amount Paid	
Adult Gross Misdemeanor Supervision Fees	\$4,275.00	\$1,105.00	
Adult Misdemeanor Supervision Fees	1,525.00	785.00	
Adult Transfer-In Gross Misdemeanor Supervision Fees	750.00	600.00	
Adult Transfer-In Misdemeanor Supervision Fees	125.00	125.00	
Adult Transfer Out Fees	200.00	150.00	
Community Service Work Supervision Fees	750.00	350.00	
Driver's License Reinstatement Fees	400.00	150.00	
DWI Court	550.00	100.00	
Pre-Trial Conditional Release Fees	10,950.00	9,125.00	
Adult Informal, Unsupervised Probation Fees	3,200.00	1,715.00	
Misdemeanor Diversion Fees	450.00	350.00	
Juvenile Petty Offender Fees	1,770.00	1,230.00	
Juvenile Delinquency Fees (Findings Withheld)	105.00	75.00	
Juvenile Delinquency Fees	<u>2,100.00</u>	<u>900.00</u>	
	\$27,150.00	\$16,760.00	67.07%

Number of cases with fees waived: 25 cases in the amount of \$1,450.00.

2008 Annual Intakes

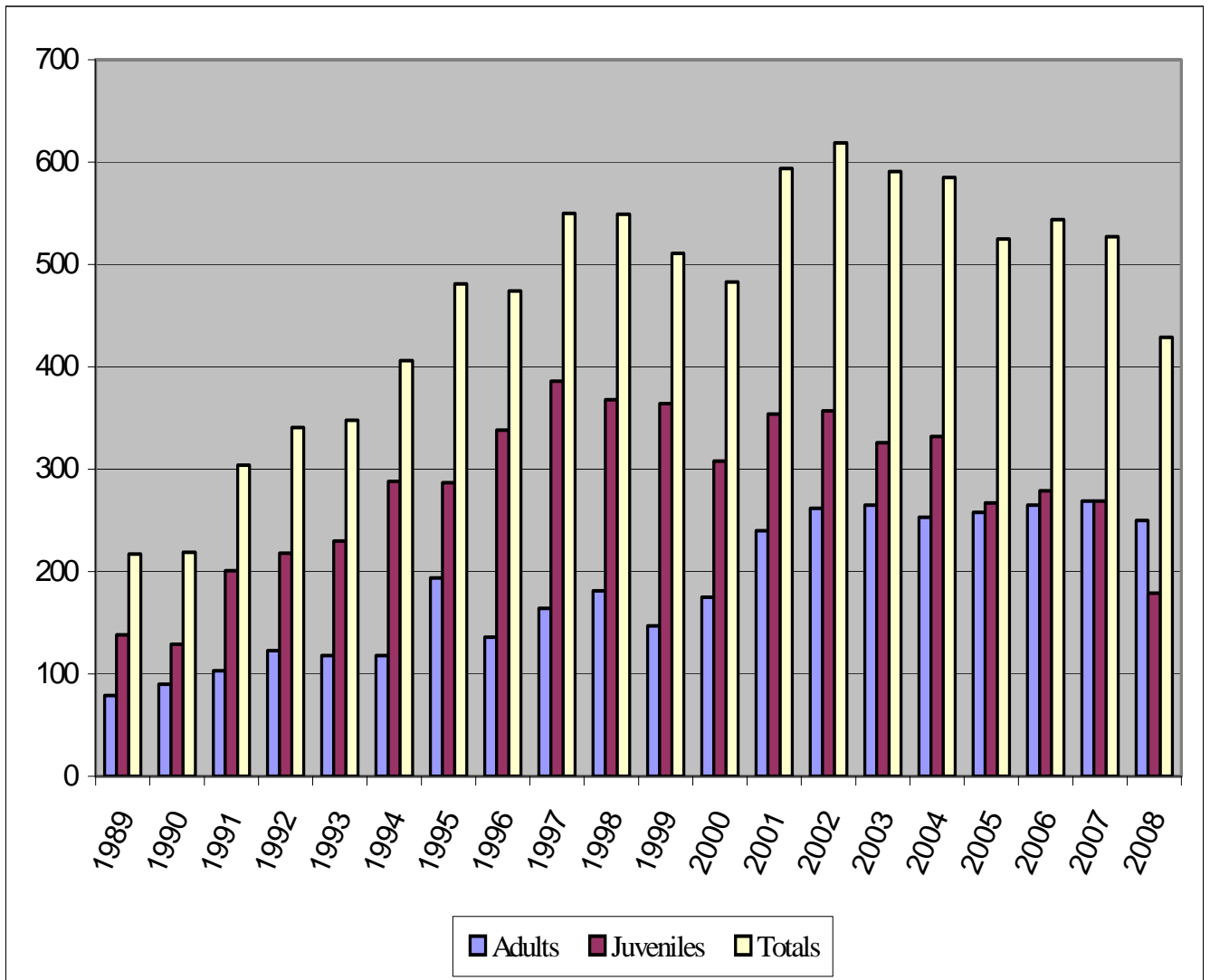
Juveniles: <u>179</u>	Number Drug/Alcohol related: <u>67</u>	Percentage: <u>37.43%</u>
Adults: <u>250</u>	Number Drug/Alcohol related: <u>177</u>	Percentage: <u>70.80%</u>

Otter Tail County Probation Adult – Juvenile Annual Intakes

ADULTS	JUVENILES	TOTALS
---------------	------------------	---------------

1989	79	138	217
1990	90	129	219
1991	103	201	304
1992	123	218	341
1993	118	230	348
1994	118	288	406
1995	194	287	481
1996	136	338	474
1997	164	386	550
1998	181	368	549
1999	147	364	511
2000	175	308	483
2001	240	354	594
2002	262	357	619
2003	265	326	591
2004	253	332	585
2005	258	267	525
2006	265	279	544
2007	269	269	527
2008	250	179	429

Otter Tail County Probation Adult – Juvenile Annual Intakes



OTTER TAIL COUNTY PROBATION

ADULT - JUVENILE MONTHLY CASELOAD

	<u>2008</u>	<u>2007</u>	<u>2006</u>	<u>2005</u>	<u>2004</u>	<u>2003</u>	<u>2002</u>	<u>2001</u>	<u>2000</u>	<u>1999</u>	<u>1998</u>	<u>1997</u>	<u>1996</u>	<u>1995</u>	<u>1994</u>	<u>1993</u>	<u>1992</u>
JANUARY	389	376	324	322	341	389	384	318	312	351	313	308	280	279	234	280	263
FEBRUARY	375	362	327	314	335	375	396	327	310	352	326	310	305	282	249	284	262
MARCH	385	372	330	305	320	345	382	312	322	344	325	310	297	299	244	289	260
APRIL	389	371	326	312	328	333	364	319	330	330	325	312	315	306	254	291	262
MAY	374	381	324	321	321	335	356	322	346	307	328	311	319	299	262	317	258
JUNE	356	354	317	321	333	320	350	336	346	315	338	295	317	285	260	279	269
JULY	352	339	317	294	324	323	363	337	326	307	349	329	308	278	261	281	250
AUGUST	334	352	315	309	330	331	379	327	319	301	326	318	327	265	257	253	256
SEPTEMBER	345	380	318	302	335	313	383	329	313	313	330	332	317	275	237	256	250
OCTOBER	368	373	340	319	344	333	380	344	327	312	328	325	305	295	237	273	269
NOVEMBER	371	389	353	313	347	336	392	353	323	295	338	333	317	275	239	260	282
DECEMBER	373	386	362	307	338	336	406	354	313	304	355	310	308	255	263	237	289
AVERAGE MONTHLY CASELOAD	368	370	329	312	333	339	378	332	324	319	332	316	310	283	250	275	264

Adult-Juvenile Average Monthly Caseload

