

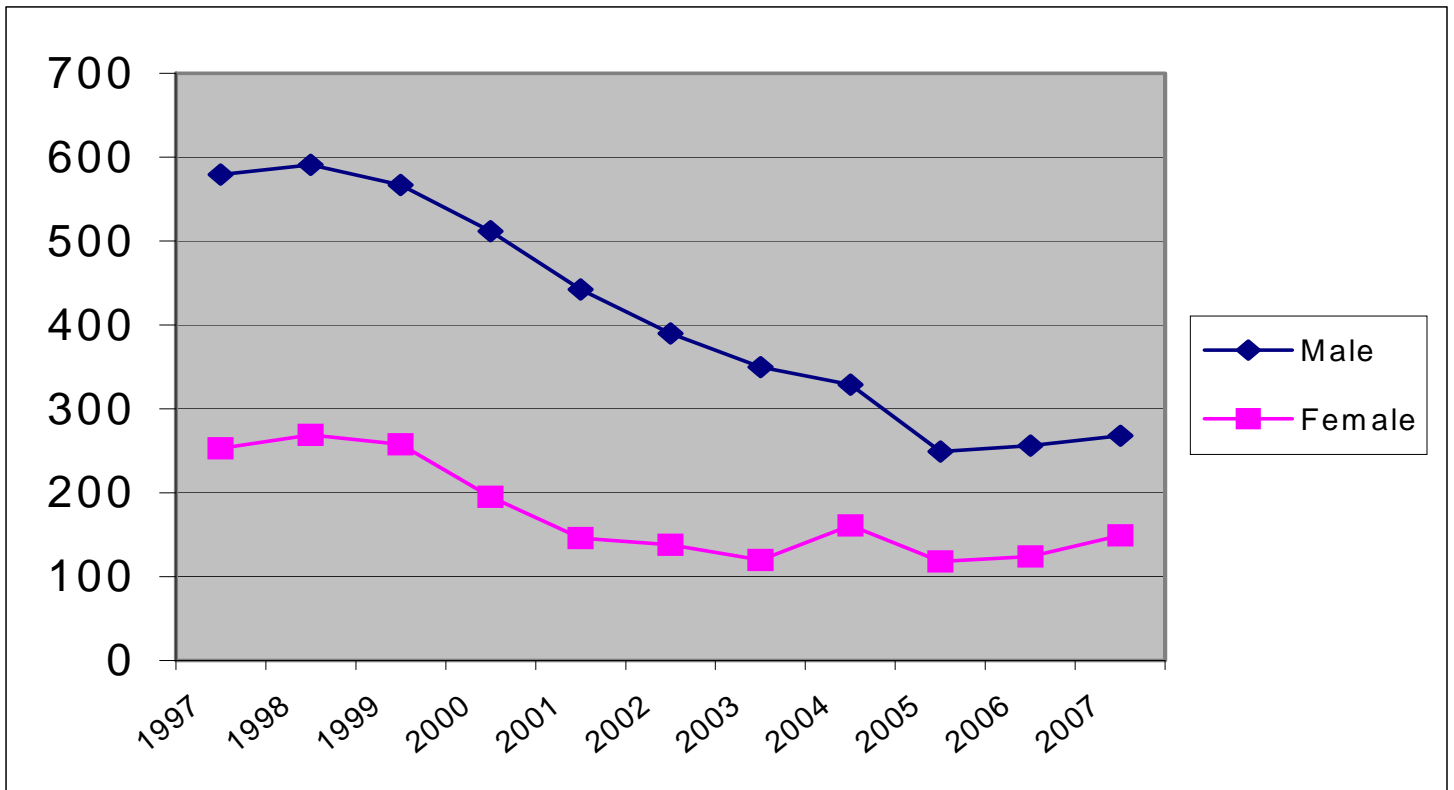
JUVENILE OFFENSES CHARGED 2007

DELINQUENT AND PETTY OFFENSES

OFFENSE	MALE	FEMALE	TOTAL
ALCOHOL OFFENSE	74	54	128
ASSAULT	5	9	14
BURGLARY	8	0	8
CONTEMPT	1	0	1
CONTROLLED SUBSTANCE CRIME	3	2	5
CRIMINAL DAMAGE TO PROPERTY	16	4	20
CRIMINAL SEXUAL CONDUCT	8	0	8
CURFEW VIOLATION	4	0	4
DISORDERLY CONDUCT	25	14	39
DRINK AND DRIVE	9	2	11
DOMESTIC ASSAULT	3	3	6
FALSE NAME TO POLICE	0	2	2
FLEE POLICE	2	0	2
FORGERY	1	0	1
HUNTING VIOLATION	1	0	1
INDECENT EXPOSURE	1	0	1
LITTERING	2	0	2
OBSTRUCTION OF JUSTICE	1	1	2
OPEN BOTTLE	2	0	2
POSSESSION OF DRUG PARAPHERNALIA	14	3	17
POSSESSION OF MARIJUANA	16	1	17
PUBLIC NUISANCE	2	0	2
SHOPLIFTING	1	7	8
TAMPER WITH MOTOR VEHICLE	4	0	4
THEFT (PETTY MISDEMEANOR)	4	3	7
THEFT (MISDEMEANOR)	22	17	39
THEFT (GROSS MISDEMEANOR)	0	0	0
THEFT (FELONY)	2	0	2
THEFT OF MOTOR VEHICLE	3	0	3
TOBACCO OFFENSE	22	25	47
TRESPASS	10	2	12
VIOLATION OF AN ORDER FOR PROTECTION	1	0	1
WEAPONS OFFENSE	1	0	1
TOTAL 2007	268	149	417
TOTAL 2006	256	124	380
TOTAL 2005	249	118	367

JUVENILE OFFENSES CHARGED 1997 - 2007

DELINQUENT AND PETTY OFFENSES



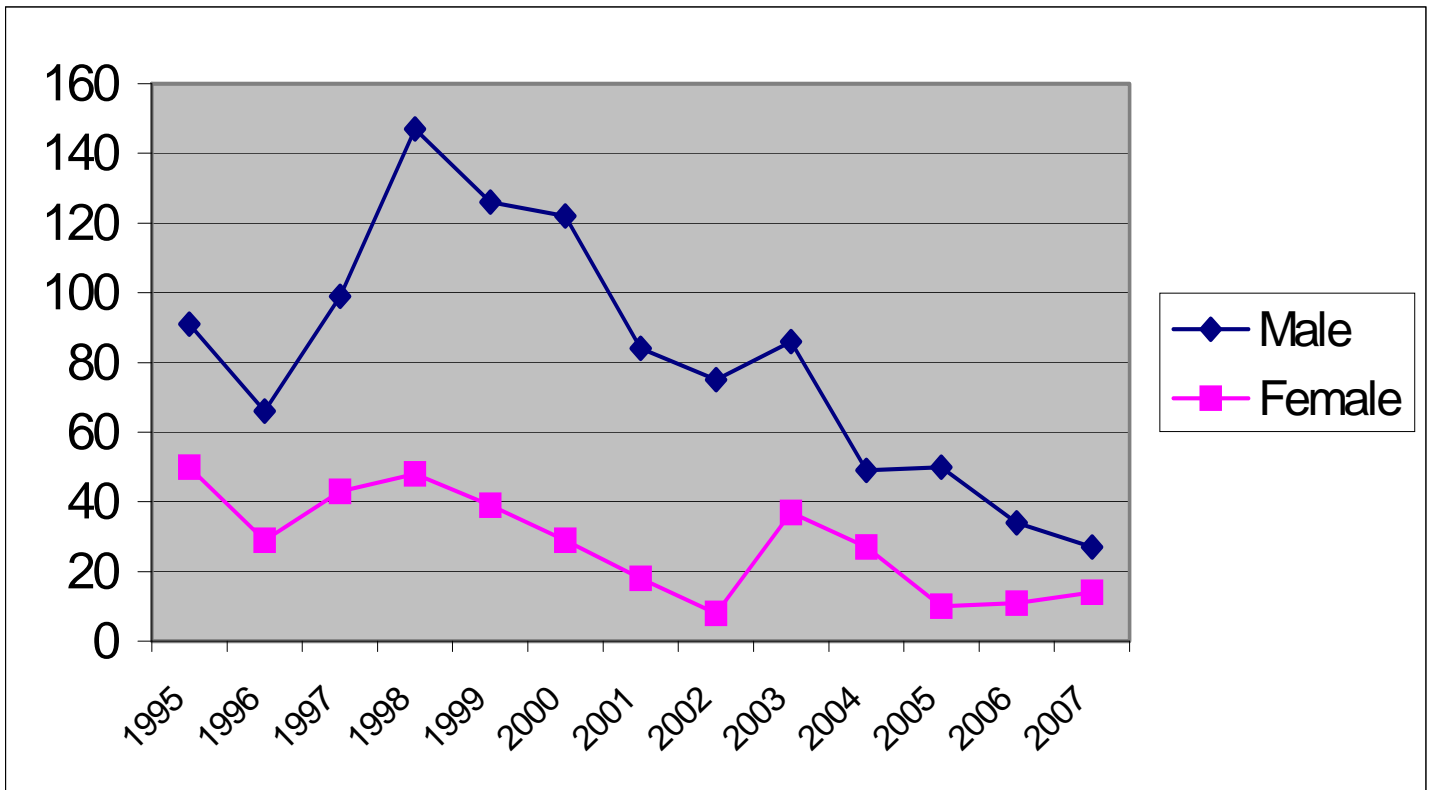
JUVENILE OFFENSES CHARGED 2007

TRAFFIC

OFFENSE	MALE	FEMALE	TOTAL
CARELESS/RECKLESS DRIVING	4	1	5
DRIVING AFTER SUSPENSION/CANCELLATION	2	2	4
MISCELLANEOUS TRAFFIC OFFENSES	7	6	13
NO DRIVER'S LICENSE	8	3	11
NO INSURANCE	2	1	3
SPEEDING	4	1	5
	-----	-----	-----
TOTAL 2007	27	14	41
	=====	=====	=====
TOTAL 2006	34	11	45
TOTAL 2005	50	10	60

JUVENILE OFFENSES CHARGED 1995 - 2007

TRAFFIC



TOP JUVENILE OFFENSES

2007

OFFENSE	MALE	FEMALE	TOTAL
ALCOHOL OFFENSE	74	54	128
TOBACCO USE	22	25	47
DISORDERLY CONDUCT	25	14	39
THEFT (MISDEMEANOR)	22	17	39
CRIMINAL DAMAGE TO PROPERTY	16	4	20
POSSESS MARIJUANA	16	1	17
POSSESS PARAPHERNALIA	14	3	17
ASSAULT	5	9	14
MISCELLANEOUS TRAFFIC OFFENSES	7	6	13
TRESPASS	10	2	12

JUVENILE OFFENDER AGE REPORT

2007

<u>AGE</u>	<u>MALE</u>	<u>FEMALE</u>	<u>TOTAL</u>
TEN	0	0	0
ELEVEN	1	0	1
TWELVE	3	3	6
THIRTEEN	13	8	21
FOURTEEN	18	14	32
FIFTEEN	25	8	33
SIXTEEN	37	14	52
SEVENTEEN	55	22	77
EIGHTEEN	1	0	1
TOTALS 2007	153	69	222

JUVENILE OFFENDER RACE REPORT

2006

<u>AGE</u>	<u>MALE</u>	<u>FEMALE</u>	<u>TOTAL</u>
WHITE	135	60	195
HISPANIC	9	2	11
BLACK	8	3	11
AMERICAN INDIAN	1	4	5
UNKNOWN	0	0	0
ASIAN	0	0	0
TOTALS 2007	153	69	222

JUVENILE CHARGES FILED 2007

DELINQUENT/PETTY/TRAFFIC

TYPE	MALE	FEMALE	TOTAL
DELINQUENT OFFENSES	121	54	175
PETTY OFFENSES	147	95	242
TRAFFIC	27	14	41
TOTAL 2007	295	163	458
TOTAL 2006	290	135	425
TOTAL 2005	299	128	427

JUVENILES PLACED ON PROBATION 2007*

TYPE	MALE	FEMALE	TOTAL
PETTY MISDEMEANOR	2	4	6
MISDEMEANOR	125	64	189
GROSS MISDEMEANOR	10	1	11
FELONY	16	0	16
TOTAL 2007	153	69	222
TOTAL 2006	148	75	223
TOTAL 2005	143	62	205

*Unduplicated Offenders Placed on Probation

JUVENILE SOURCE OF OFFENDERS REPORT 2007

SOURCE OF CLIENT	MALE	FEMALE	TOTAL
BATTLE LAKE POLICE DEPARTMENT	3	1	4
BECKER COUNTY SHERIFF'S OFFICE	4	5	9
BLUE EARTH COUNTY SHERIFF'S OFFICE	0	1	1
CLAY COUNTY SHERIFF'S OFFICE	2	1	3
CROW WING COUNTY SHERIFF'S OFFICE	0	1	1
DETROIT LAKES POLICE DEPARTMENT	4	1	5
DOUGLAS COUNTY SHERIFF'S OFFICE	11	1	12
FERGUS FALLS POLICE DEPARTMENT	91	61	152
HENNING POLICE DEPARTMENT	8	2	10
MN HIGHWAY PATROL	8	8	16
NEW YORK MILLS POLICE DEPARTMENT	19	8	27
STATE OF NORTH DAKOTA	1	2	3
OTTER TAIL COUNTY ATTORNEY	1	0	1
OTTER TAIL COUNTY SHERIFF'S OFFICE	63	20	83
PARKERS PRAIRIE POLICE DEPARTMENT	10	2	12
PELICAN RAPIDS POLICE DEPARTMENT	5	2	7
PERHAM POLICE DEPARTMENT	25	30	55
PINE COUNTY SHERIFF'S OFFICE	1	0	1
STEARNS COUNTY SHERIFF'S OFFICE	0	1	1
SWIFT COUNTY SHERIFF'S OFFICE	0	1	1
TODD COUNTY SHERIFF'S OFFICE	0	1	1
WADENA POLICE DEPARTMENT	1	0	1
WILKIN COUNTY SHERIFF'S OFFICE	1	1	2
WRIGHT COUNTY SHERIFF'S OFFICE	1	1	2
TOTAL 2007	259	151	410
TOTAL 2006	261	120	381
TOTAL 2005	257	114	371

CHANGE DIRECTION - DRUG EDUCATION PROGRAM REFERRALS

2007

JUVENILES

AGE	MALE	FEMALE	TOTAL
12	0	0	0
13	0	0	0
14	3	2	5
15	2	5	7
16	9	8	17
17	11	10	21
18	8	8	16
	<hr/>	<hr/>	<hr/>
TOTAL 2007	33	33	66
	=====	=====	=====
TOTAL 2006	31	21	52
TOTAL 2005	38	25	63

JUVENILES REFERRED BY CITY THEY LIVE IN

BATTLE LAKE	3
BLUFFTON	1
DEER CREEK	1
DENT	3
ELIZABETH	1
ERHARD	2
FERGUS FALLS	19
NEW YORK MILLS	6
OTTERTAIL	2
PARKERS PRAIRIE	8
PELICAN RAPIDS	5
PERHAM	12
ROTHSAY	1
UNDERWOOD	2
	<hr/>
TOTAL	66

KEYS TO INNERVISION
 COGNITIVE RESTRUCTURING PROGRAM

2007

JUVENILES

AGE	MALE	FEMALE	TOTAL
12	2	0	2
13	0	0	0
14	1	3	4
15	2	1	3
16	4	1	5
17	4	2	6
18	4	2	6
TOTAL 2007	16	9	26
TOTAL 2006	13	5	18
TOTAL 2005	3	0	3

JUVENILES REFERRED BY CITY THEY LIVE IN

ALEXANDRIA	1
ELIZABETH	1
FERGUS FALLS	18
OTTERTAIL	1
PELICAN RAPIDS	1
PERHAM	2
VERGAS	2
TOTAL	26

**OTTER TAIL COUNTY ATTORNEY'S OFFICE
 JUVENILE DIVERSION PROGRAM
 TEEN TOBACCO AWARENESS SEMINAR REFERRALS**

2007

AGE	MALE	FEMALE	TOTAL
12	0	0	0
13	0	2	2
14	2	2	4
15	4	4	8
16	2	2	4
17	4	3	7
18	1	1	2
TOTAL 2007	13	14	27
TOTAL 2006	14	8	22
TOTAL 2005	12	4	16

JUVENILES REFERRED BY CITY THEY LIVE IN

BATTLE LAKE	2
DALTON	1
DENT	1
ERHARD	1
FERGUS FALLS	8
HENNING	2
NEW YORK MILLS	3
OTTERTAIL	2
PARKERS PRAIRIE	1
PERHAM	4
RICHVILLE	1
VERGAS	1
TOTAL	27

OTTER TAIL COUNTY ATTORNEY'S OFFICE
 JUVENILE DIVERSION PROGRAM
 THEFT CLINIC REFERRALS

2007

AGE	MALE	FEMALE	TOTAL
10	0	0	0
11	2	0	2
12	0	1	1
13	0	0	0
14	1	1	2
15	0	0	0
16	2	1	3
17	3	6	9
18	0	2	2
TOTAL 2007	8	11	19
TOTAL 2006	16	11	27
TOTAL 2005	6	9	15

JUVENILES REFERRED BY CITY THEY LIVE IN

BATTLE LAKE	
DALTON	1
ERHARD	1
FERGUS FALLS	7
FRAZEE	1
HENNING	1
NEW YORK MILLS	1
PELICAN RAPIDS	2
PERHAM	2
ROTHSAY	1
UNDERWOOD	2
TOTAL	19

ADULT OFFENSES PLACED UNDER SUPERVISION 2007

OFFENSE	MALE	FEMALE	TOTAL
ALCOHOL OFFENSE	10	1	11
ASSAULT	8	0	8
ASSAULT (DOMESTIC)	26	1	27
CHILD ENDANGERMENT	1	0	1
CONTRIBUTE TO DELINQUENCY OF MINOR	0	2	2
CONTROLLED SUBSTANCE CRIME	1	1	2
CRIMINAL DAMAGE TO PROPERTY	2	0	2
CRIMINAL FACILITATION	1	0	1
CRIMINAL SEXUAL CONDUCT	2	0	2
CRIMINAL VEHICULAR OPERATION	2	0	2
DISORDERLY CONDUCT	6	0	6
DRIVING AFTER REVOCATION/CANCELLATION	26	12	38
DWI	97	23	120
ESCAPE FROM CUSTODY	1	1	2
FALSE NAME TO PEACE OFFICER	2	0	2
FINANCIAL EXPLOITATION/VULNERABLE ADULT	0	1	1
FORGERY	2	1	3
HARRASSMENT	2	1	3
INDECENT EXPOSURE	1	0	1
INTERFERE WITH 911 CALL	3	1	4
ISSUE WORTHLESS CHECKS	2	3	5
MALICIOUS PUNISHMENT OF A CHILD	2	0	2
NON-SUPPORT	1	0	1
POSSESSION OF DRUG PARAPHERNALIA	2	0	2
POSSESSION OF MARIJUANA	1	0	1
RECEIVE STOLEN PROPERTY	2	0	2
REFUSE TO SUBMIT TO TESTING	9	4	13
SALE OF TOBACCO TO MINOR	1	0	1
SHOPLIFTING	1	0	1
THEFT (GROSS MISDEMEANOR)	4	3	7
THEFT (MISDEMEANOR)	4	1	5
TRAFFIC (MISDEMEANOR)	22	4	26
VIOLATION OF ORDER FOR PROTECTION	14	0	14
WRONGFULLY OBTAINING FOOD STAMPS	0	1	1
TOTAL 2007	258	61	319
TOTAL 2006	207	72	279
TOTAL 2005	201	58	259

ADULT OFFENDER AGE REPORT

2007

AGE	MISD	GROSS MISD	TOTAL
18 – 20	31	13	44
21 – 30	27	49	76
31 – 40	19	35	54
41 – 50	16	41	57
51 – 60	6	17	23
61+	0	3	3
TOTALS 2007	99	158	257

ADULT OFFENDER RACE REPORT

2007

TYPE	MISD	GROSS MISD	TOTAL
WHITE	85	148	233
HISPANIC	4	3	7
BLACK	7	4	11
AMERICAN INDIAN	3	3	6
UNKNOWN	0	0	0
TOTAL 2007	99	158	257

OTTER TAIL COUNTY PRE-TRIAL BAIL EVALUATIONS

2007

	MALE	FEMALE	TOTAL
PRE-TRIAL BAIL EVALUATIONS 2007	71	8	79
COMPLETED 2006	19	3	22

OFFENSES REQUIRING JUDICIAL REVIEW

ASSAULT IN THE FIFTH DEGREE			5
DOMESTIC ASSAULT			63
INTERFERE WITH 911 CALL			5
VIOLATION OF HARRASSMENT ORDER			4
VIOLATION OF ORDER FOR PROTECTION			8
			<hr/> 85

OTTER TAIL COUNTY DRIVERS LICENSE REINSTATEMENT PROGRAM

2007

	MALE	FEMALE	TOTAL
COURT REFERRALS TO PROBATION	14	6	20

Eight defendants chose not to participate in the Driver's License program.

OTTER TAIL COUNTY PROBATION PROGRAMS FOR 2007

DISTRICT COURT REFERRALS:

Investigations Conducted: 58 (2006 = 62; 2005 = 50)
Gross Misdemeanor Bond Studies: 1 (2006 = 3; 2005 = 3)
Domestic Abuse Investigations: 54 (2006 = 64; 2005 = 58)
Accepted into Misdemeanant Diversion Program: 4 (2006 = 4; 2005 = 7)

ADULT PRE-TRIAL RELEASE CASES 2006

	Male	Female	Total	Average Days Served
Random Testing	45	8	53	74.2
Remote Electronic Alcohol Monitoring	72	31	103	40.4

8.74% of the electronic monitoring and 14.8% of the random testing cases resulted in violation reports by Probation Officers.

ELECTRONIC MONITORING:

Adults: 103* (2006 = 82; 2005 = 97)
30* of the 103 were eligible for the REAM Grant Subsidy.
Juvenciles: 0 (2006 = 0; 2005 = 0)

FINES:

Total Number of Juvenciles Fined: 140 (2006 = 151; 2005 = 155)
Total Amount of Juvencile Fines Assessed: \$11,588.00 (2006 = \$14,244.00; 2005 = \$16,793.00)
Total Amount of Juvencile Fines Collected: \$6,774.00
A total of \$2,138.00 in fines was worked off through community service work.

RESTITUTION:

Total Number of Juvenciles ordered to pay restitution: 39
Total Amount of Restitution Ordered: \$11,339.00
Total Amount of Restitution Paid: \$4,745.00

OTTER TAIL COUNTY
PROBATION PROGRAMS FOR 2007
(CONTINUED)

COMMUNITY SERVICE:

264 Juveniles:	5,191.0	Community Service Work Hours Assigned
	3,793.0	Community Service Work Hours Completed in Otter Tail County
	386.0	Community Service Work Hours Completed in Other Counties
42 Adults:	2,669.0	Community Service Work Hours Assigned
	1,238.0	Community Service Work Hours Completed in Otter Tail County
	133.0	Community Service Work Hours Completed in Other Counties

A total of 7,860.0 community service work hours were assigned during 2007. A total of 5,031.0 community service work hours were supervised in Otter Tail County worksites. A total of 519.0 community service hours were supervised for Otter Tail County by another county. (2006 = 8,302.00 hours assigned; 2005 = 6,730.00 hours assigned)

Department of Corrections Community Service Work Supervised by Otter Tail County Community Service Specialist:

21 Adults:	2,314.49	Community Service Work Hours Assigned
	620.25	Community Service Work Hours Completed in Otter Tail County

JUVENILE JAIL REMOVAL PROJECT:

Number of Juveniles Held in the Temporary Hold Facility:

Delinquents: 17 (2006 = 15; 2005 = 18)

CHIPS*: 0 (2005 = 0; 2005 = 0)

A total of 17 juveniles were held in the Temporary Hold Facility.

*Child In Need of Protective Services

JUVENILE RESTITUTION WORK PROGRAM:

Number of Juveniles Referred to Program: 12

Number of Hours Worked: 283.57

Amount Paid Out to Victims: \$1,701.44

PROBATION RESTRUCTURE/MODIFICATION 2007

Number of Probation Case Modifications approved: 5 (2006 = 7, 2005 = 9)

Additional Community Service Hours Imposed: 44 (2006 = 84, 2005 = 98)

Additional Chemical Dependency Evaluations Assigned: 0 (2006 = 01, 2005 = 1)

Additional Random Urinalysis Testing Authorized: 1 (2006 = 1, 2005 = 1)

OTTER TAIL COUNTY
PROBATION PROGRAMS FOR 2007
(CONTINUED)

JUVENILE OUT-OF-HOME PLACEMENTS

Out-of-Home Placements: 40 (2006 = 41; 2005 = 34)
 Juvenile Sex Offender Specific Treatment: 7 (2006 = 0; 2005 = 2)
 Shelter Care Placements: 19 (2006 = 10; 2005 = 10)
 Juveniles Held in Secure Detention: 63 (2006 = 56; 2005 = 57)
 Average Number of Days Held in Secure Detention: 7.02 (2006 = 8.66; 2005 = 4.9)
 Delinquent Juveniles Held in Temporary Hold Facility: 17 (2006 = 15; 2005 = 18)
 Cost of Out-of-Home Placements: \$959,021.67 (2006=\$746,957.00; 2005 = \$699,942.52)
 Cost of Secure Detention: \$81,848.00 (2006=\$85,570.00; 2005 = \$47,224.00)

PROBATION SUPERVISION FEES 2007

	Amount Assessed	Amount Paid	
Adult Gross Misdemeanor Supervision Fees	\$5,550.00	\$3,517.00	
Adult Misdemeanor Supervision Fees	1,590.00	1,250.00	
Adult Transfer-In Gross Misdemeanor Supervision Fees	1,200.00	520.00	
Adult Transfer-In Misdemeanor Supervision Fees	500.00	400.00	
Adult Transfer Out Fees	400.00	275.00	
Community Service Work Supervision Fees	900.00	700.00	
Driver's License Reinstatement Fees	550.00	150.00	
Pre-Trial Conditional Release Fees	9,300.00	8,400.00	
Adult Informal, Unsupervised Probation Fees	2,500.00	2,000.00	
Misdemeanor Diversion Fees	200.00	200.00	
Juvenile Petty Offender Fees	2,340.00	1,815.00	
Juvenile Delinquency Fees (Findings Withheld)	165.00	150.00	
Juvenile Delinquency Fees	<u>2,600.00</u>	<u>1,165.00</u>	
	\$27,795.00	\$20,542.00	73.91%

Number of cases with fees waived: 23 cases in the amount of \$1,365.00.

2007 Annual Intakes

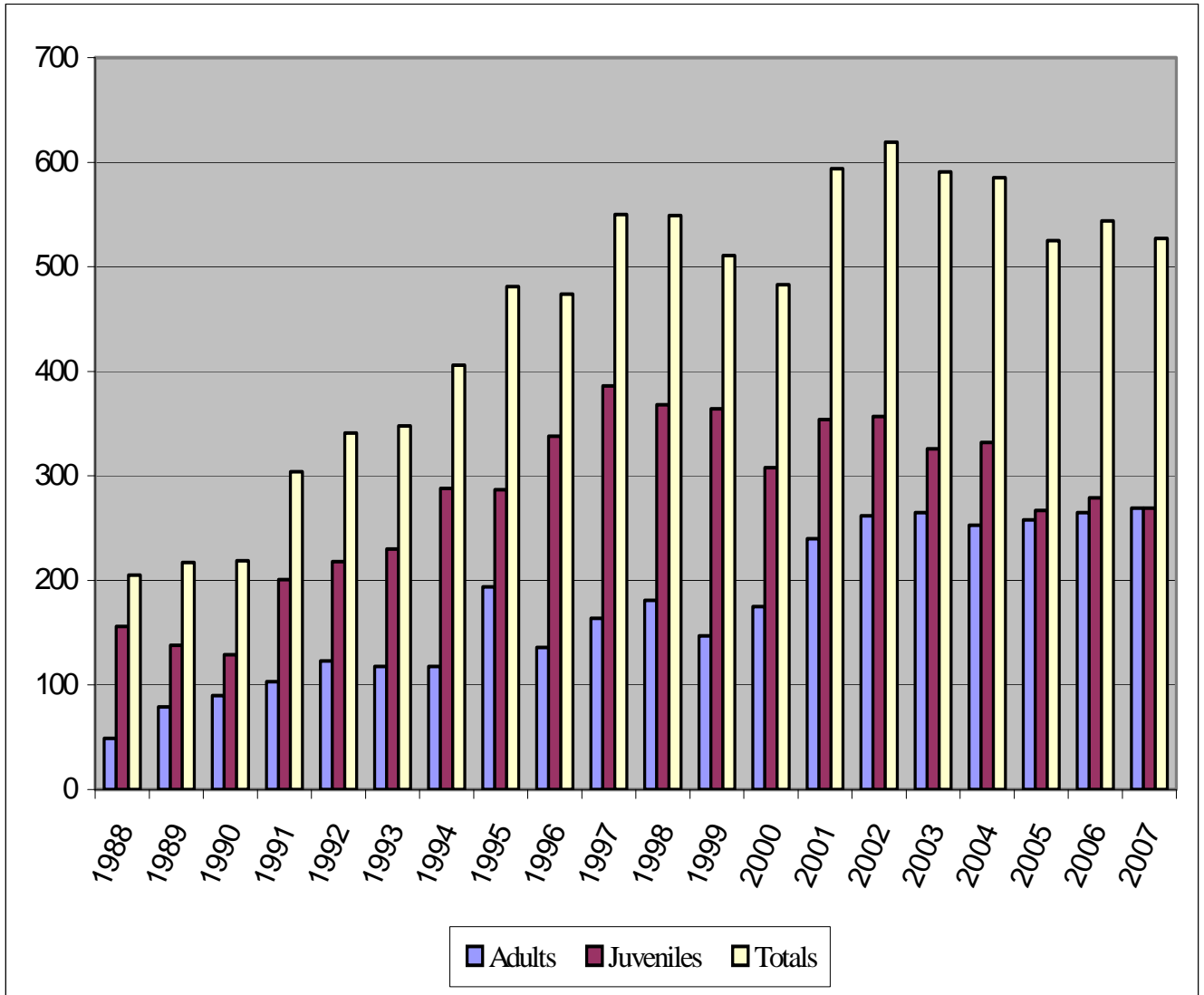
Juveniles: <u>269</u>	Number Drug/Alcohol related: <u>100</u>	Percentage: <u>37.17%</u>
Adults: <u>269</u>	Number Drug/Alcohol related: <u>163</u>	Percentage: <u>60.59%</u>

**Otter Tail County Probation
 Adult – Juvenile Annual Intakes**

	ADULTS	JUVENILES	TOTALS
1988	49	156	205

1989	79	138	217
1990	90	129	219
1991	103	201	304
1992	123	218	341
1993	118	230	348
1994	118	288	406
1995	194	287	481
1996	136	338	474
1997	164	386	550
1998	181	368	549
1999	147	364	511
2000	175	308	483
2001	240	354	594
2002	262	357	619
2003	265	326	591
2004	253	332	585
2005	258	267	525
2006	265	279	544
2007	269	269	527

Otter Tail County Probation
Adult – Juvenile Annual Intakes



OTTER TAIL COUNTY PROBATION

ADULT - JUVENILE MONTHLY CASELOAD

	<u>2007</u>	<u>2006</u>	<u>2005</u>	<u>2004</u>	<u>2003</u>	<u>2002</u>	<u>2001</u>	<u>2000</u>	<u>1999</u>	<u>1998</u>	<u>1997</u>	<u>1996</u>	<u>1995</u>	<u>1994</u>	<u>1993</u>	<u>1992</u>	<u>1991</u>
JANUARY	376	324	322	341	389	384	318	312	351	313	308	280	279	234	280	263	172
FEBRUARY	362	327	314	335	375	396	327	310	352	326	310	305	282	249	284	262	177
MARCH	372	330	305	320	345	382	312	322	344	325	310	297	299	244	289	260	175
APRIL	371	326	312	328	333	364	319	330	330	325	312	315	306	254	291	262	177
MAY	381	324	321	321	335	356	322	346	307	328	311	319	299	262	317	258	193
JUNE	354	317	321	333	320	350	336	346	315	338	295	317	285	260	279	269	184
JULY	339	317	294	324	323	363	337	326	307	349	329	308	278	261	281	250	187
AUGUST	352	315	309	330	331	379	327	319	301	326	318	327	265	257	253	256	182
SEPTEMBER	380	318	302	335	313	383	329	313	313	330	332	317	275	237	256	250	209
OCTOBER	373	340	319	344	333	380	344	327	312	328	325	305	295	237	273	269	227
NOVEMBER	389	353	313	347	336	392	353	323	295	338	333	317	275	239	260	282	234
DECEMBER	386	362	307	338	336	406	354	313	304	355	310	308	255	263	237	289	255
AVERAGE MONTHLY CASELOAD	370	329	312	333	339	378	332	324	319	332	316	310	283	250	275	264	198

Adult-Juvenile Average Monthly Caseload

