

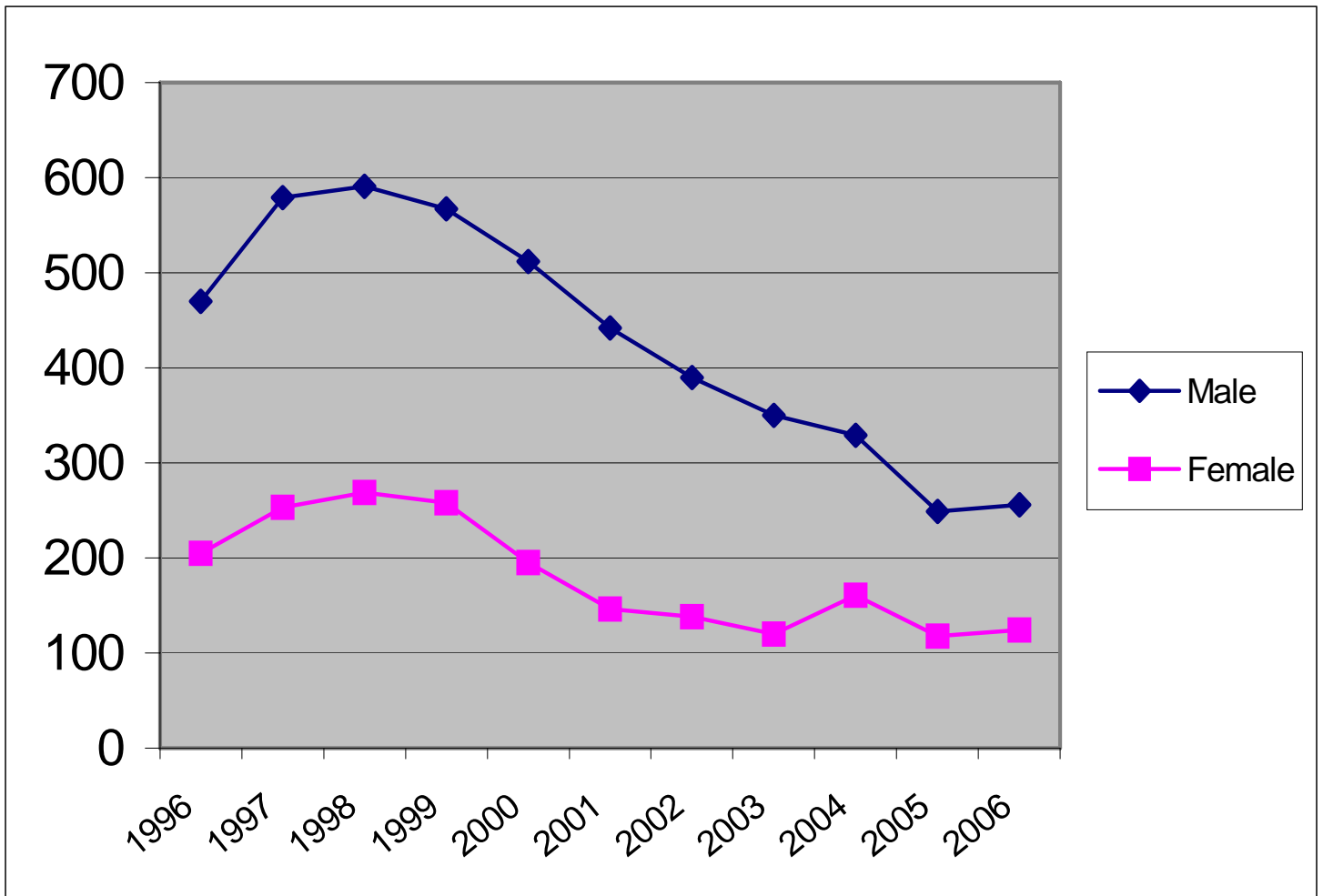
## JUVENILE OFFENSES CHARGED 2006

### DELINQUENT AND PETTY OFFENSES

<b>OFFENSE</b>	<b>MALE</b>	<b>FEMALE</b>	<b>TOTAL</b>
AID AND ABET THEFT	1	0	1
ALCOHOL OFFENSE	52	47	99
ARSON	2	0	2
ASSAULT	18	9	27
BURGLARY	12	1	13
CONTEMPT	2	0	2
CONTROLLED SUBSTANCE CRIME	2	3	5
CRIMINAL DAMAGE TO PROPERTY	5	1	6
CRIMINAL SEXUAL CONDUCT	2	1	3
CURFEW VIOLATION	4	3	7
DISORDERLY CONDUCT	36	10	46
DRINK AND DRIVE	9	2	11
DOMESTIC ASSAULT	1	0	1
FALSE FIRE ALARM	0	1	1
FALSE NAME TO POLICE	1	0	1
FLEE POLICE	1	0	1
FORGERY	1	0	1
FURNISHING ALCOHOL	0	1	1
INTERFERE WITH 911 CALL	1	0	1
MANSLAUGHTER	1	0	1
POSSESSION OF DRUG PARAPHERNALIA	17	4	21
POSSESSION OF MARIJUANA	15	5	20
RECEIVING STOLEN PROPERTY	2	0	2
SHOPLIFTING	10	5	15
TAMPER WITH MOTOR VEHICLE	2	0	2
THEFT (PETTY MISDEMEANOR)	3	1	4
THEFT (MISDEMEANOR)	14	12	26
THEFT (GROSS MISDEMEANOR)	1	2	3
THEFT (FELONY)	2	2	4
THEFT OF MOTOR VEHICLE	1	2	3
TOBACCO OFFENSE	32	8	40
TRESPASS	6	4	10
<b>TOTAL 2006</b>	<b>256</b>	<b>124</b>	<b>380</b>
TOTAL 2005	249	118	367
TOTAL 2004	329	161	490

## JUVENILE OFFENSES CHARGED 1996 - 2006

### DELINQUENT AND PETTY OFFENSES



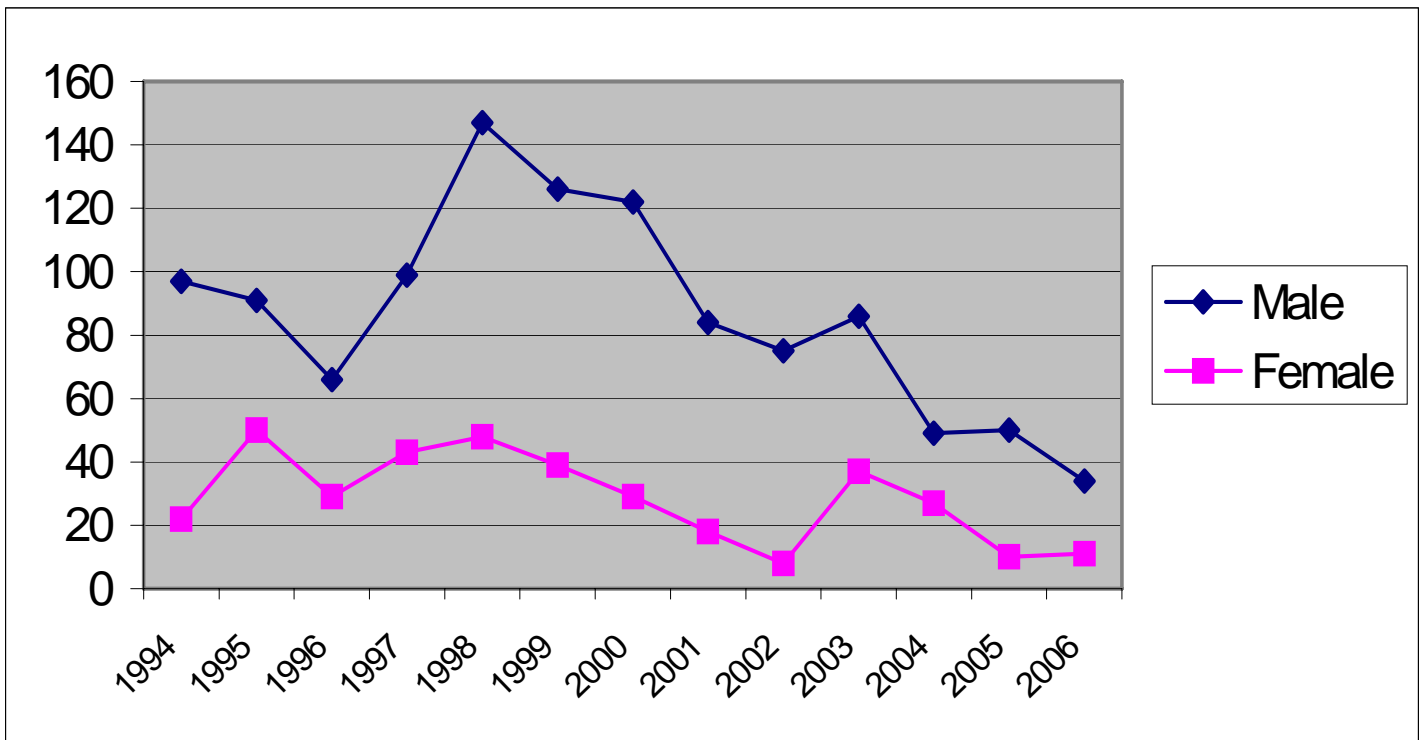
## JUVENILE OFFENSES CHARGED 2006

### TRAFFIC

<b>OFFENSE</b>	<b>MALE</b>	<b>FEMALE</b>	<b>TOTAL</b>
CARELESS/RECKLESS DRIVING	8	2	10
DRIVING AFTER SUSPENSION/CANCELLATION	3	0	3
LEAVING THE SCENE	1	0	1
HIT AND RUN	2	1	3
MISCELLANEOUS TRAFFIC OFFENSES	9	1	10
NO DRIVER'S LICENSE	4	5	9
NO INSURANCE	3	2	5
SPEEDING	4	0	4
<b>TOTAL 2006</b>	<b>34</b>	<b>11</b>	<b>45</b>
	=====	=====	=====
TOTAL 2005	50	10	60
TOTAL 2004	49	27	76

## JUVENILE OFFENSES CHARGED 1994 - 2006

### TRAFFIC



## TOP JUVENILE OFFENSES

2006

<b>OFFENSE</b>	<b>MALE</b>	<b>FEMALE</b>	<b>TOTAL</b>
ALCOHOL OFFENSE	52	47	99
DISORDERLY CONDUCT	36	10	46
TOBACCO USE	32	8	40
ASSAULT	18	9	27
THEFT (MISDEMEANOR)	14	12	26
POSSESS DRUG PARAPHERNALIA	17	4	21
POSSESS MARIJUANA	15	5	20
SHOPLIFTING	10	5	15
BURGLARY	12	1	13
DRINK AND DRIVE	9	2	11

## JUVENILE OFFENDER AGE REPORT

2006

<b>AGE</b>	<b>MALE</b>	<b>FEMALE</b>	<b>TOTAL</b>
TEN	0	1	1
ELEVEN	1	0	1
TWELVE	3	3	6
THIRTEEN	7	4	11
FOURTEEN	13	7	20
FIFTEEN	30	16	46
SIXTEEN	39	20	59
SEVENTEEN	54	24	78
EIGHTEEN	1	0	1
<b>TOTALS 2006</b>	<b>148</b>	<b>75</b>	<b>223</b>

## JUVENILE OFFENDER RACE REPORT

2006

<b>AGE</b>	<b>MALE</b>	<b>FEMALE</b>	<b>TOTAL</b>
WHITE	135	64	199
HISPANIC	2	1	3
BLACK	5	4	9
AMERICAN INDIAN	6	5	11
UNKNOWN	0	0	0
ASIAN	0	1	1
<b>TOTALS 2006</b>	<b>148</b>	<b>75</b>	<b>223</b>

## JUVENILE CHARGES FILED 2006

### DELINQUENT/PETTY/TRAFFIC

<b>TYPE</b>	<b>MALE</b>	<b>FEMALE</b>	<b>TOTAL</b>
DELINQUENT OFFENSES	126	52	178
PETTY OFFENSES	130	72	202
TRAFFIC	34	11	45
<b>TOTAL 2006</b>	<b>290</b>	<b>135</b>	<b>425</b>
TOTAL 2005	299	128	427
TOTAL 2004	378	188	566

### JUVENILES PLACED ON PROBATION 2006\*

<b>TYPE</b>	<b>MALE</b>	<b>FEMALE</b>	<b>TOTAL</b>
PETTY MISDEMEANOR	15	3	18
MISDEMEANOR	110	60	170
GROSS MISDEMEANOR	3	4	7
FELONY	20	8	28
<b>TOTAL 2006</b>	<b>148</b>	<b>75</b>	<b>223</b>
TOTAL 2005	143	62	205
TOTAL 2004	176	82	258

\*Unduplicated Offenders Placed on Probation

**JUVENILE SOURCE OF OFFENDERS REPORT  
 2006**

<b>SOURCE OF CLIENT</b>	<b>MALE</b>	<b>FEMALE</b>	<b>TOTAL</b>
BATTLE LAKE POLICE DEPARTMENT	6	1	7
BECKER COUNTY SHERIFF'S OFFICE	4	3	7
CHIPPEWA COUNTY SHERIFF'S OFFICE	1	0	1
CLAY COUNTY SHERIFF'S OFFICE	5	1	6
DETROIT LAKES POLICE DEPARTMENT	6	3	9
DOUGLAS COUNTY SHERIFF'S OFFICE	10	2	12
FARIBAULT COUNTY SHERIFF'S OFFICE	1	1	2
FERGUS FALLS POLICE DEPARTMENT	109	42	151
GOODHUE COUNTY SHERIFF'S OFFICE	1	0	1
HUBBARD COUNTY SHERIFF'S OFFICE	0	1	1
LAKES COUNTY SHERIFF'S OFFICE	0	1	1
LYON COUNTY SHERIFF'S OFFICE	0	1	1
MN DEPARTMENT OF NATURAL RESOURCES	1	0	1
MN HIGHWAY PATROL	9	3	12
MORRISON COUNTY SHERIFF'S OFFICE	1	0	1
NEW YORK MILLS POLICE DEPARTMENT	11	9	20
STATE OF NORTH DAKOTA	1	0	1
OTTER TAIL COUNTY SHERIFF'S OFFICE	41	20	61
PARKERS PRAIRIE POLICE DEPARTMENT	5	2	7
PELICAN RAPIDS POLICE DEPARTMENT	10	10	20
PERHAM POLICE DEPARTMENT	26	12	38
SHERBURNE COUNTY SHERIFF'S OFFICE	0	1	1
TODD COUNTY SHERIFF'S OFFICE	4	0	4
TRAVERSE COUNTY SHERIFF'S OFFICE	1	0	1
WADENA POLICE DEPARTMENT	3	2	5
WILKIN COUNTY SHERIFF'S OFFICE	5	4	9
WRIGHT COUNTY SHERIFF'S OFFICE	0	1	1
<b>TOTAL 2006</b>	<b>261</b>	<b>120</b>	<b>381</b>
<b>TOTAL 2005</b>	<b>257</b>	<b>114</b>	<b>371</b>
<b>TOTAL 2004</b>	<b>324</b>	<b>164</b>	<b>488</b>

## CHANGE DIRECTION - DRUG EDUCATION PROGRAM REFERRALS

2006

### JUVENILES

AGE	MALE	FEMALE	TOTAL
12	0	0	0
13	0	0	0
14	0	3	3
15	1	2	3
16	9	3	12
17	17	7	24
18	4	6	10
 	<hr style="width: 20%; margin: auto;"/>	<hr style="width: 20%; margin: auto;"/>	<hr style="width: 20%; margin: auto;"/>
<b>TOTAL 2006</b>	<b>31</b>	<b>21</b>	<b>52</b>
	=====	=====	=====
TOTAL 2005	38	25	63
TOTAL 2004	40	23	63

#### JUVENILES REFERRED BY CITY THEY LIVE IN

BATTLE LAKE	6
CAMPBELL	1
CLITHERALL	1
DALTON	1
DENT	4
ERHARD	2
FERGUS FALLS	16
NEW YORK MILLS	2
OTTERTAIL	2
PELICAN RAPIDS	8
PERHAM	3
RICHVILLE	1
UNDERWOOD	2
VERGAS	2
VINING	1
<b>TOTAL</b>	<hr style="width: 20%; margin: auto;"/> <b>52</b>

KEYS TO INNERVISION  
COGNITIVE RESTRUCTURING PROGRAM

2006

JUVENILES

<b>AGE</b>	<b>MALE</b>	<b>FEMALE</b>	<b>TOTAL</b>
12	0	0	0
13	0	0	0
14	2	1	3
15	3	2	5
16	2	1	3
17	3	1	4
18	3	0	3
<b>TOTAL 2006</b>	<b>13</b>	<b>5</b>	<b>18</b>
<b>TOTAL 2005</b>	<b>3</b>	<b>0</b>	<b>3</b>
<b>TOTAL 2004</b>	<b>0</b>	<b>0</b>	<b>0</b>

**OTTER TAIL COUNTY ATTORNEY'S OFFICE  
 JUVENILE DIVERSION PROGRAM  
 TEEN TOBACCO AWARENESS SEMINAR REFERRALS**

2006

<b>AGE</b>	<b>MALE</b>	<b>FEMALE</b>	<b>TOTAL</b>
12	0	0	0
13	0	0	0
14	0	1	1
15	4	3	7
16	5	1	6
17	3	3	6
18	2	0	2
<b>TOTAL 2006</b>	<b>14</b>	<b>8</b>	<b>22</b>
<b>TOTAL 2005</b>	<b>12</b>	<b>4</b>	<b>16</b>
<b>TOTAL 2004</b>	<b>19</b>	<b>2</b>	<b>21</b>

**JUVENILES REFERRED BY CITY THEY LIVE IN**

BATTLE LAKE	1
DALTON	2
DENT	1
FERGUS FALLS	6
NEW YORK MILLS	2
OTTERTAIL	3
PELICAN RAPIDS	1
PERHAM	5
UNDERWOOD	1
<b>TOTAL</b>	<b>22</b>

OTTER TAIL COUNTY ATTORNEY'S OFFICE  
 JUVENILE DIVERSION PROGRAM  
 THEFT CLINIC REFERRALS

2006

<u>AGE</u>	<u>MALE</u>	<u>FEMALE</u>	<u>TOTAL</u>
10	0	0	0
11	0	0	0
12	0	1	1
13	3	3	6
14	1	2	3
15	2	2	4
16	2	2	4
17	8	0	8
18	0	1	1
	-----	-----	-----
<b>TOTAL 2006</b>	<b>16</b>	<b>11</b>	<b>27</b>
	=====	=====	=====
TOTAL 2005	6	9	15
TOTAL 2004	14	15	29

JUVENILES REFERRED BY CITY THEY LIVE IN

BATTLE LAKE	2
DALTON	1
ERHARD	1
FERGUS FALLS	14
FOXHOME	1
FRAZEE	1
OTTERTAIL	1
PARKERS PRAIRIE	1
PELICAN RAPIDS	3
UNDERWOOD	1
VINING	1
	-----
<b>TOTAL</b>	<b>27</b>

## ADULT OFFENSES PLACED UNDER SUPERVISION 2006

OFFENSE	MALE	FEMALE	TOTAL
ALCOHOL OFFENSE	11	3	14
ASSAULT	9	1	10
ASSAULT (DOMESTIC)	30	5	35
CHILD ENDANGERMENT	1	0	1
CONTRIBUTE TO DELINQUENCY OF MINOR	0	1	1
CRIMINAL DAMAGE TO PROPERTY	3	0	3
CRIMINAL SEXUAL CONDUCT	2	0	2
CRIMINAL VEHICULAR OPERATION	2	0	2
DISORDERLY CONDUCT	5	4	9
DRIVING AFTER REVOCATION/CANCELLATION	22	11	33
DWI	57	25	82
ESCAPE FROM CUSTODY	1	0	1
FALSE NAME TO PEACE OFFICER	0	2	2
FORGERY	0	1	1
FURNISH ALCOHOL TO MINOR	5	2	7
HARRASSMENT	1	0	1
HIT AND RUN	1	0	1
INTERFERE WITH 911 CALL	1	1	2
INTERFERE WITH PRIVACY	1	0	1
ISSUE WORTHLESS CHECKS	1	0	1
OBSTRUCT LEGAL PROCESS	2	1	3
OPEN BOTTLE	0	1	1
POSSESSION OF DRUG PARAPHERNALIA	1	1	2
POSSESSION OF MARIJUANA	2	1	3
RECEIVE STOLEN PROPERTY	1	0	1
REFUSE TO SUBMIT TO TESTING	6	2	8
TERRORISTIC THREATS	3	0	3
THEFT (GROSS MISDEMEANOR)	4	0	4
THEFT (MISDEMEANOR)	0	3	3
TRAFFIC (MISDEMEANOR)	23	5	28
VIOLATION OF ORDER FOR PROTECTION	9	1	10
WRONGFULLY OBTAINING FOOD STAMPS	0	1	1
WEAPONS OFFENSE	3	0	3
<b>TOTAL 2006</b>	<b>207</b>	<b>72</b>	<b>279</b>
=====			
TOTAL 2005	201	58	259
TOTAL 2004	204	66	270

## ADULT OFFENDER AGE REPORT

2006

<b>AGE</b>	<b>MISD</b>	<b>GROSS MISD</b>	<b>TOTAL</b>
18 – 20	28	12	40
21 – 30	32	39	71
31 – 40	16	26	42
41 – 50	19	25	44
51 – 60	10	8	18
61+	2	3	5
<b>TOTALS 2006</b>	<b>107</b>	<b>113</b>	<b>220</b>

## ADULT OFFENDER RACE REPORT

2006

<b>TYPE</b>	<b>MISD</b>	<b>GROSS MISD</b>	<b>TOTAL</b>
WHITE	98	103	201
HISPANIC	3	2	5
BLACK	3	4	7
AMERICAN INDIAN	3	4	7
UNKNOWN	0	0	0
<b>TOTAL 2006</b>	<b>107</b>	<b>113</b>	<b>220</b>

## OTTER TAIL COUNTY PRE-TRIAL BAIL EVALUATIONS\*

2006

	<b>MALE</b>	<b>FEMALE</b>	<b>TOTAL</b>
PRE-TRIAL BAIL EVALUATIONS 2006	19	3	22

### OFFENSES REQUIRING JUDICIAL REVIEW

ASSAULT IN THE FIFTH DEGREE			4
CRIMINAL SEXUAL CONDUCT IN THE FIFTH DEGREE			1
DOMESTIC ASSAULT			16
INTERFERE WITH 911 CALL			2
VIOLATION OF HARRASSMENT ORDER			2
VIOLATION OF ORDER FOR PROTECTION			1
			<hr/>
			26

\*Otter Tail County Court Services started Pre-Trial Bail Evaluations on August 8, 2006.

## OTTER TAIL COUNTY DRIVERS LICENSE REINSTATEMENT PROGRAM

2006

	<b>MALE</b>	<b>FEMALE</b>	<b>TOTAL</b>
COURT REFERRALS TO COURT SERVICES	9	3	12

Six defendants chose not to participate in the Driver's License program.

## OTTER TAIL COUNTY COURT SERVICES PROGRAMS FOR 2006

### DISTRICT COURT REFERRALS:

Investigations Conducted: 62 (2005 = 50; 2004 = 54)

Gross Misdemeanor Bond Studies: 3 (2005 = 3; 2004 = 1)

Domestic Abuse Investigations: 64 (2005 = 58; 2004 = 61)

Accepted into Misdemeanant Diversion Program: 4 (2005 = 7; 2004 = 3)

### ADULT PRE-TRIAL RELEASE CASES 2006

	Male	Female	Total	Average Days Served
Random Testing	19	2	21	80.52
Remote Electronic Alcohol Monitoring	51	31	82	47.67

30.49% of the electronic monitoring and 28.57% of the random testing cases resulted in violation reports by Probation Officers.

### ELECTRONIC MONITORING:

Adults: 82\* (2005 = 97; 2004 = 88)

\*34 of the 82 were eligible for the REAM Grant Subsidy.

Juveniles: 0 (2005 = 0; 2004 = 0)

### FINES:

Total Number of Juveniles Fined: 151 (2005 = 155; 2004 = 189)

Total Amount of Juvenile Fines Assessed: \$14,244.00 (2005 = \$16,793.00; 2004 = \$19,545.00)

Total Amount of Juvenile Fines Collected: \$7,898.00

A total of \$2,524.00 in fines was worked off through community service work.

### RESTITUTION:

Total Number of Juveniles ordered to pay restitution: 44

Total Amount of Restitution Ordered: \$27,948.00

Total Amount of Restitution Paid: \$9,024.00

**OTTER TAIL COUNTY  
COURT SERVICES PROGRAMS FOR 2006  
(CONTINUED)**

**COMMUNITY SERVICE:**

321 Juveniles:	6,559.0	Community Service Work Hours Assigned
	4,578.0	Community Service Work Hours Completed in Otter Tail County
	546.0	Community Service Work Hours Completed in Other Counties
35 Adults:	1,743.0	Community Service Work Hours Assigned
	1,051.0	Community Service Work Hours Completed in Otter Tail County
	200.0	Community Service Work Hours Completed in Other Counties

A total of 8,302.0 community service work hours were assigned during 2006. A total of 5,629.0 community service work hours were supervised in Otter Tail County worksites. A total of 746.0 community service hours were supervised for Otter Tail County by another county. (2005 = 6,730.00 hours assigned; 2004 = 9,464.00 hours assigned)

Department of Corrections Community Service Work Supervised by Otter Tail County Community Service Specialist:

22 Adults:	2,922.4	Community Service Work Hours Assigned
	547.3	Community Service Work Hours Completed in Otter Tail County

**JUVENILE JAIL REMOVAL PROJECT:**

Number of Juveniles Held in the Temporary Hold Facility:

Delinquents: 15 (2005 = 18; 2004 = 14)

CHIPS\*: 0 (2005 = 0; 2004 = 1)

A total of 15 juveniles were held in the Temporary Hold Facility.

\*Child In Need of Protective Services

**JUVENILE RESTITUTION WORK PROGRAM:**

Number of Juveniles Referred to Program: 20

Number of Hours Worked: 700.0

Amount Paid Out to Victims: \$3,500.00

**PROBATION RESTRUCTURE/MODIFICATION 2006**

Number of Probation Case Modifications approved: 7 (2005 = 9, 2004 = 11)

Additional Community Service Hours Imposed: 84 (2005 = 98, 2004 = 31)

Additional Chemical Dependency Evaluations Assigned: 0 (2005 = 1, 2004 = 6)

Additional Random Urinalysis Testing Authorized: 1 (2005 = 1, 2004 = 1)

## OTTER TAIL COUNTY COURT SERVICES PROGRAMS FOR 2006 (CONTINUED)

### JUVENILE OUT-OF-HOME PLACEMENTS

Out-of-Home Placements: 41 (2005 = 34; 2004 = 47)

Juvenile Sex Offender Specific Treatment: 0 (2005 = 2; 2004 = 3)

Shelter Care Placements: 10 (2005 = 10; 2004 = 13)

Juveniles Held in Secure Detention: 56 (2005 = 57; 2004 = 63)

Average Number of Days Held in Secure Detention: 8.66 (2005 = 4.9; 2004 = 9.0)

Delinquent Juveniles Held in Temporary Hold Facility: 15 (2005 = 18; 2004 = 14)

Cost of Out of-Home Placements: \$746,957.00 (2005 = \$699,942.52)

Cost of Secure Detention: \$85,570.00 (2005 = \$47,224.00)

### COURT SERVICES SUPERVISION FEES 2006

	Amount Assessed	Amount Paid	
Adult Gross Misdemeanor Supervision Fees	\$3,800.00	\$3,200.00	
Adult Misdemeanor Supervision Fees	3,150.00	1,694.00	
Adult Transfer-In Gross Misdemeanor Supervision Fees	2,000.00	1,750.00	
Adult Transfer-In Misdemeanor Supervision Fees	500.00	434.00	
Adult Transfer Out Fees	300.00	250.00	
Community Service Work Supervision Fees	900.00	675.00	
Driver's License Reinstatement Fees	150.00	50.00	
Pre-Trial Conditional Release Fees	7,200.00	6,500.00	
Adult Informal, Unsupervised Probation Fees	2,480.00	1,725.00	
Misdemeanor Diversion Fees	200.00	200.00	
Juvenile Petty Offender Fees	2,400.00	1,875.00	
Juvenile Delinquency Fees (Findings Withheld)	390.00	330.00	
Juvenile Delinquency Fees	<u>2,150.00</u>	<u>1,350.00</u>	
	\$25,620.00	\$ 20,033.00	78.19%

Number of cases with fees waived: 5

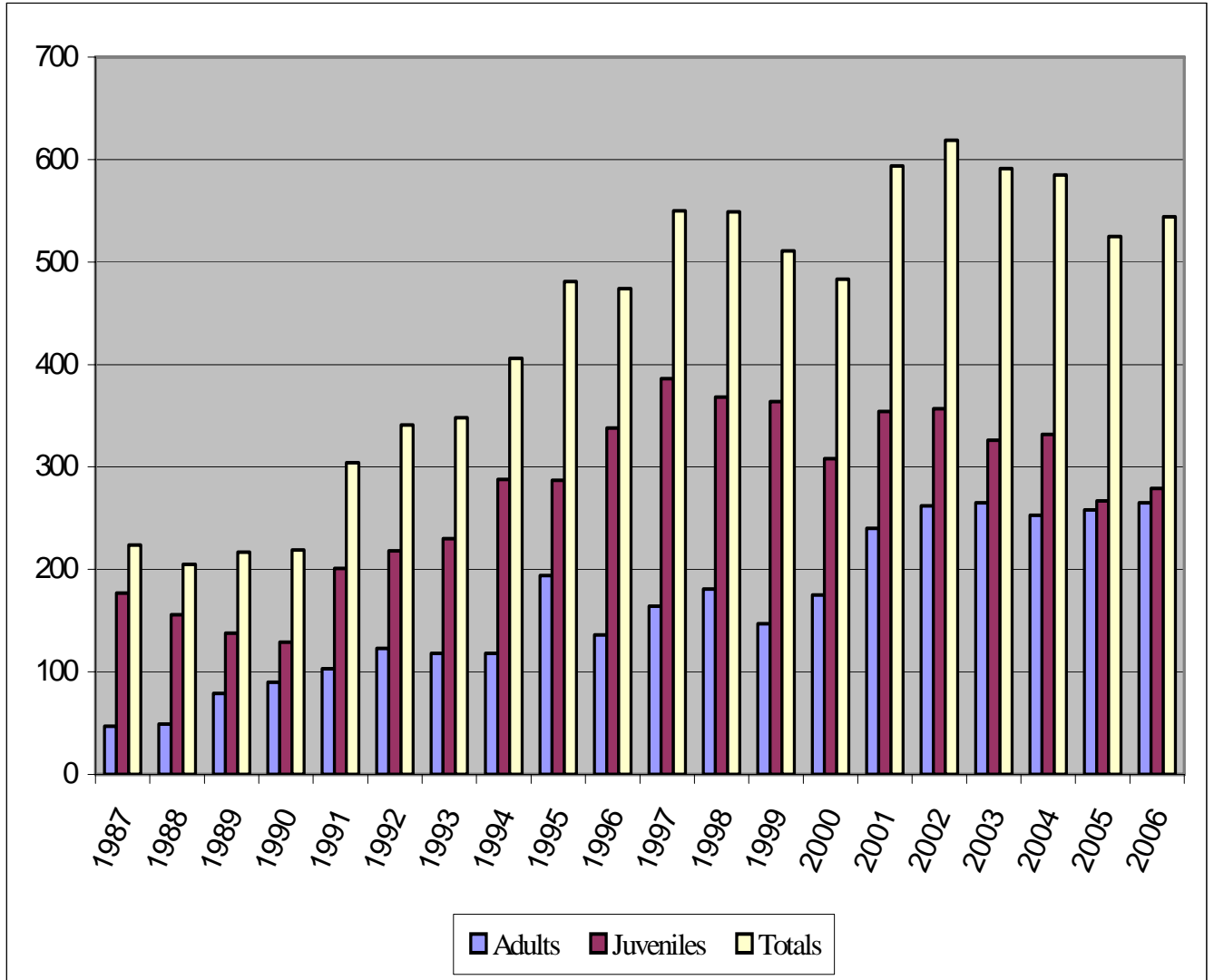
#### 2006 Annual Intakes

Juveniles: <u>279</u>	Number Drug/Alcohol related: <u>98</u>	Percentage: <u>35.13%</u>
Adults: <u>265</u>	Number Drug/Alcohol related: <u>163</u>	Percentage: <u>61.51%</u>

Otter Tail County Court Services  
Adult – Juvenile Annual Intakes

	<b>ADULTS</b>	<b>JUVENILES</b>	<b>TOTALS</b>
<b>1987</b>	47	177	<b>224</b>
<b>1988</b>	49	156	<b>205</b>
<b>1989</b>	79	138	<b>217</b>
<b>1990</b>	90	129	<b>219</b>
<b>1991</b>	103	201	<b>304</b>
<b>1992</b>	123	218	<b>341</b>
<b>1993</b>	118	230	<b>348</b>
<b>1994</b>	118	288	<b>406</b>
<b>1995</b>	194	287	<b>481</b>
<b>1996</b>	136	338	<b>474</b>
<b>1997</b>	164	386	<b>550</b>
<b>1998</b>	181	368	<b>549</b>
<b>1999</b>	147	364	<b>511</b>
<b>2000</b>	175	308	<b>483</b>
<b>2001</b>	240	354	<b>594</b>
<b>2002</b>	262	357	<b>619</b>
<b>2003</b>	265	326	<b>591</b>
<b>2004</b>	253	332	<b>585</b>
<b>2005</b>	258	267	<b>525</b>
<b>2006</b>	265	279	<b>544</b>

### Otter Tail County Court Services Adult – Juvenile Annual Intakes



## OTTER TAIL COUNTY COURT SERVICES

### ADULT - JUVENILE MONTHLY CASELOAD

	<u>2006</u>	<u>2005</u>	<u>2004</u>	<u>2003</u>	<u>2002</u>	<u>2001</u>	<u>2000</u>	<u>1999</u>	<u>1998</u>	<u>1997</u>	<u>1996</u>	<u>1995</u>	<u>1994</u>	<u>1993</u>	<u>1992</u>	<u>1991</u>	<u>1990</u>
<b>JANUARY</b>	324	322	341	389	384	318	312	351	313	308	280	279	234	280	263	172	173
<b>FEBRUARY</b>	327	314	335	375	396	327	310	352	326	310	305	282	249	284	262	177	179
<b>MARCH</b>	330	305	320	345	382	312	322	344	325	310	297	299	244	289	260	175	177
<b>APRIL</b>	326	312	328	333	364	319	330	330	325	312	315	306	254	291	262	177	176
<b>MAY</b>	324	321	321	335	356	322	346	307	328	311	319	299	262	317	258	193	169
<b>JUNE</b>	317	321	333	320	350	336	346	315	338	295	317	285	260	279	269	184	156
<b>JULY</b>	317	294	324	323	363	337	326	307	349	329	308	278	261	281	250	187	154
<b>AUGUST</b>	315	309	330	331	379	327	319	301	326	318	327	265	257	253	256	182	155
<b>SEPTEMBER</b>	318	302	335	313	383	329	313	313	330	332	317	275	237	256	250	209	154
<b>OCTOBER</b>	340	319	344	333	380	344	327	312	328	325	305	295	237	273	269	227	167
<b>NOVEMBER</b>	353	313	347	336	392	353	323	295	338	333	317	275	239	260	282	234	174
<b>DECEMBER</b>	362	307	338	336	406	354	313	304	355	310	308	255	263	237	289	255	172
<b>AVERAGE MONTHLY CASELOAD</b>	<b>329</b>	<b>312</b>	<b>333</b>	<b>339</b>	<b>378</b>	<b>332</b>	<b>324</b>	<b>319</b>	<b>332</b>	<b>316</b>	<b>310</b>	<b>283</b>	<b>250</b>	<b>275</b>	<b>264</b>	<b>198</b>	<b>167</b>

