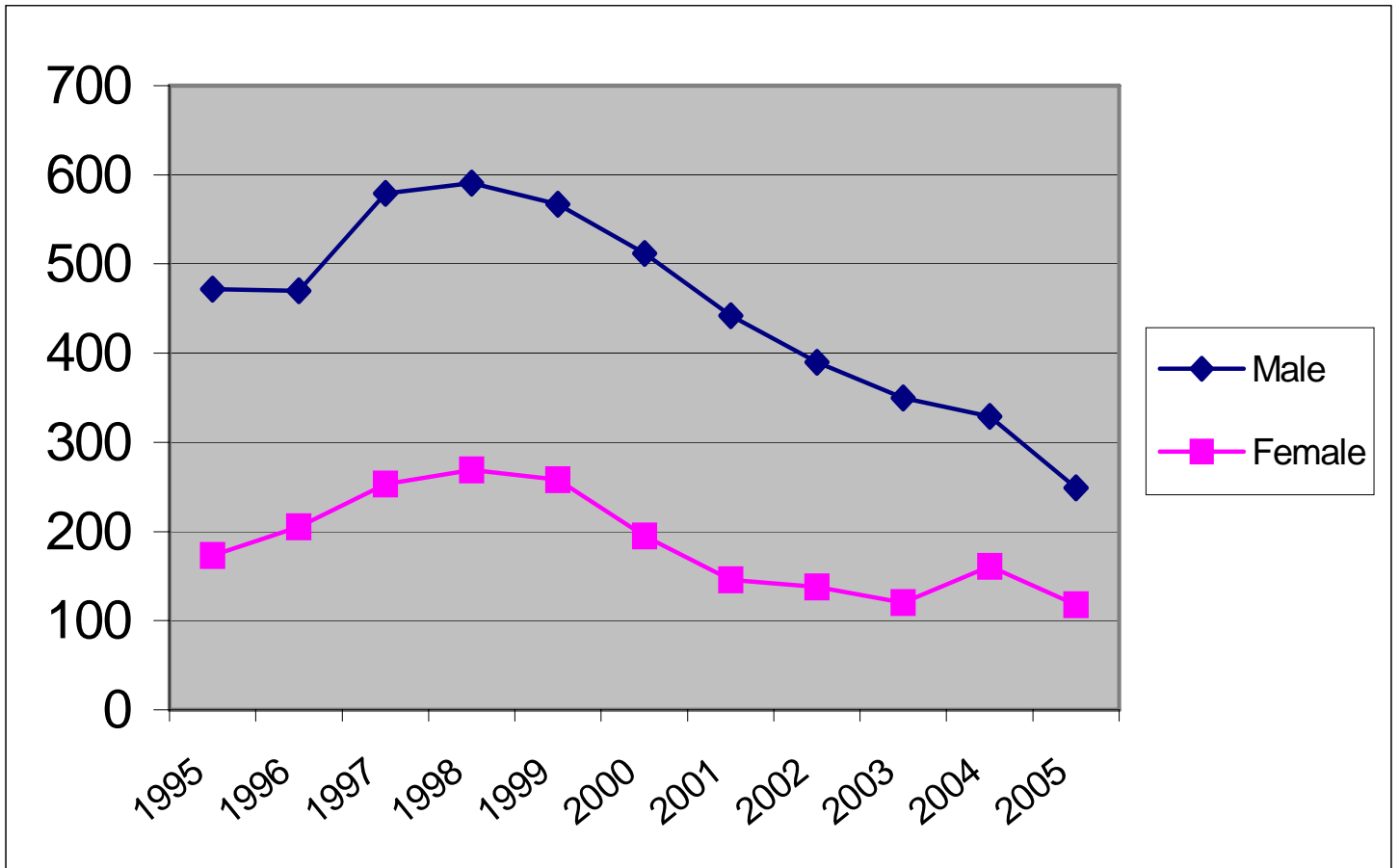


JUVENILE OFFENSES CHARGED 2005

DELINQUENT AND PETTY OFFENSES

OFFENSE	MALE	FEMALE	TOTAL
ALCOHOL OFFENSE	64	41	105
ASSAULT	13	3	16
BURGLARY	4	3	7
CONTROLLED SUBSTANCE CRIME	3	3	6
COUNTERFEITING AS ACCOMPLICE	1	0	1
CRIMINAL DAMAGE TO PROPERTY	7	2	9
CRIMINAL SEXUAL CONDUCT	3	0	3
CRIMINAL VEHICULAR OPERATION	1	0	1
CURFEW VIOLATION	3	4	7
DISORDERLY CONDUCT	19	7	26
DOMESTIC ASSAULT	7	1	8
DRINK AND DRIVE	8	4	12
DWI	0	1	1
FALSELY REPORTING A CRIME	0	1	1
FLEE POLICE	0	1	1
HIT AND RUN	1	0	1
INDECENT EXPOSURE	1	0	1
LITTERING	1	0	1
OBSTRUCT LEGAL PROCESS	1	0	1
OPEN BOTTLE	4	1	5
PEACE/PRIVACY OFFENSE	1	0	1
POSSESSION OF DRUG PARAPHERNALIA	15	5	20
POSSESSION OF MARIJUANA	20	4	24
RECEIVING STOLEN PROPERTY	3	2	5
SHOPLIFTING	9	9	18
TAMPER WITH MOTOR VEHICLE	2	0	2
TERRORISTIC THREATS	2	0	2
THEFT (PETTY MISDEMEANOR)	8	0	8
THEFT (MISDEMEANOR)	12	10	22
THEFT (GROSS MISDEMEANOR)	4	1	5
THEFT (FELONY)	3	1	4
THEFT OF MOTOR VEHICLE	1	0	1
TOBACCO OFFENSE	22	12	34
TRESPASS	6	2	8
TOTAL 2005	249	118	367
TOTAL 2004	329	161	490
TOTAL 2003	350	120	470

DELINQUENT AND PETTY OFFENSES



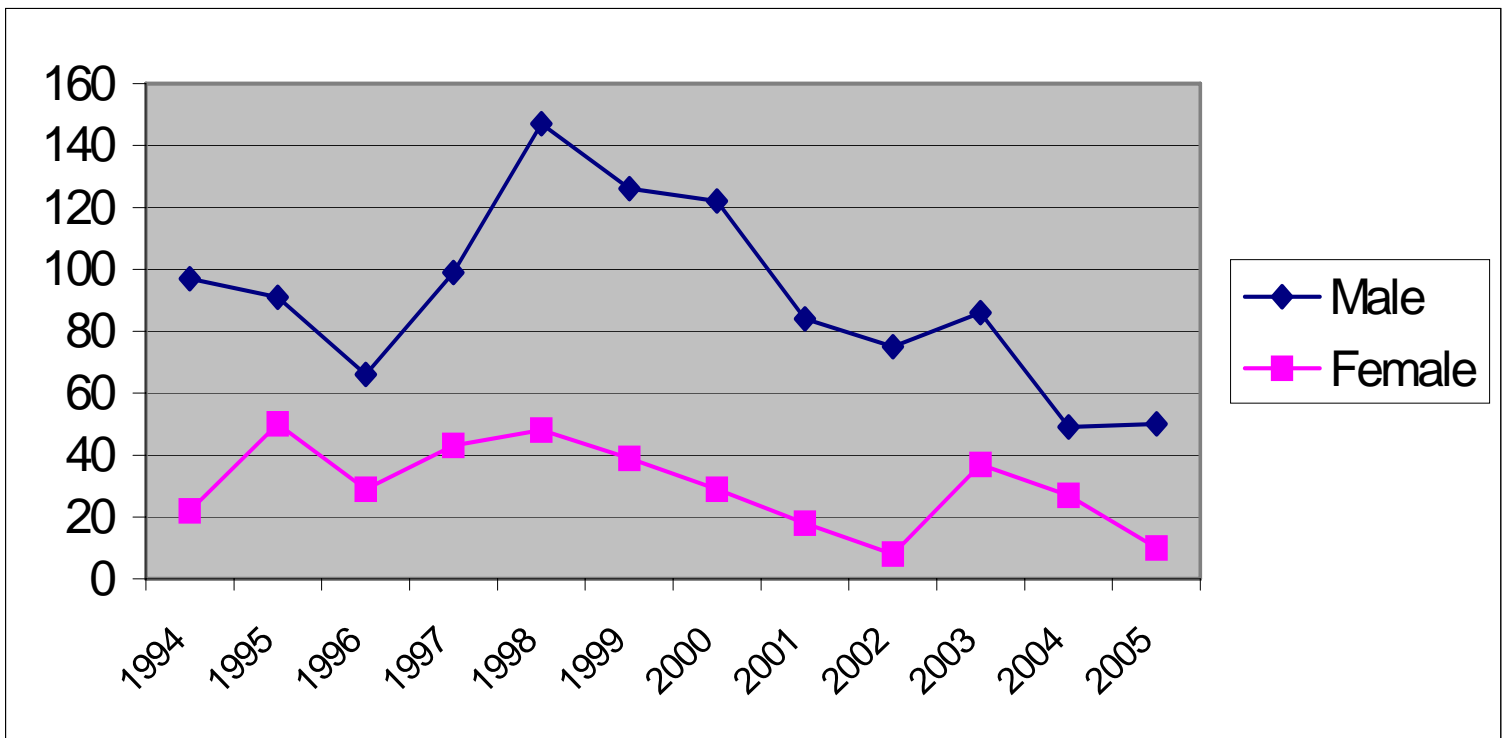
JUVENILE OFFENSES CHARGED 2005

TRAFFIC

OFFENSE	MALE	FEMALE	TOTAL
CARELESS/RECKLESS DRIVING	10	0	10
DRIVING AFTER SUSPENSION/CANCELLATION	3	0	3
LEAVING THE SCENE	1	0	1
HIT AND RUN	1	1	2
MISCELLANEOUS TRAFFIC OFFENSES	15	2	17
NO DRIVER'S LICENSE	12	6	18
NO INSURANCE	5	0	5
SPEEDING	3	1	4
TOTAL 2005	50	10	60
	=====	=====	=====
TOTAL 2004	49	27	76
TOTAL 2003	86	37	123

JUVENILE OFFENSES CHARGED 1990 - 2005

TRAFFIC



TOP JUVENILE OFFENSES

2005

OFFENSE	MALE	FEMALE	TOTAL
ALCOHOL OFFENSE	64	41	105
TOBACCO USE	22	12	34
DISORDERLY CONDUCT	19	7	26
POSSESS MARIJUANA	20	4	24
THEFT (MISDEMEANOR)	12	10	22
POSSESS DRUG PARAPHERNALIA	15	5	20
SHOPLIFTING	9	9	18
NO DRIVERS LICENSE	12	6	18
TRAFFIC OFFENSES	15	2	17
ASSAULT	13	3	16

JUVENILE OFFENDER AGE REPORT

2005

<u>AGE</u>	<u>MALE</u>	<u>FEMALE</u>	<u>TOTAL</u>
TEN	0	0	0
ELEVEN	3	1	4
TWELVE	5	2	7
THIRTEEN	6	3	9
FOURTEEN	17	6	23
FIFTEEN	25	10	35
SIXTEEN	31	19	50
SEVENTEEN	49	20	69
EIGHTEEN	7	1	8
TOTALS 2005	143	62	205

JUVENILE OFFENDER RACE REPORT

2005

<u>AGE</u>	<u>MALE</u>	<u>FEMALE</u>	<u>TOTAL</u>
WHITE	127	53	180
HISPANIC	5	1	6
BLACK	6	4	10
AMERICAN INDIAN	5	4	9
UNKNOWN	0	0	0
ASIAN	0	0	0
TOTALS 2005	143	62	205

JUVENILE CHARGES FILED 2005

DELINQUENT/PETTY/TRAFFIC

TYPE	MALE	FEMALE	TOTAL
DELINQUENT OFFENSES	74	26	100
PETTY OFFENSES	175	92	267
TRAFFIC	50	10	60
TOTAL 2005	299	128	427
TOTAL 2004	378	188	566
TOTAL 2003	436	157	593

JUVENILES PLACED ON PROBATION 2005*

TYPE	MALE	FEMALE	TOTAL
PETTY MISDEMEANOR	11	5	16
MISDEMEANOR	108	48	156
GROSS MISDEMEANOR	8	1	9
FELONY	16	8	24
TOTAL 2005	143	62	205
TOTAL 2004	176	82	258
TOTAL 2003	190	62	252

*Unduplicated Offenders Placed on Probation

JUVENILE SOURCE OF OFFENDERS REPORT 2005

SOURCE OF CLIENT	MALE	FEMALE	TOTAL
BATTLE LAKE POLICE DEPARTMENT	13	0	13
BECKER COUNTY SHERIFF'S OFFICE	3	1	4
CLAY COUNTY SHERIFF'S OFFICE	6	2	8
DETROIT LAKES POLICE DEPARTMENT	6	5	11
DOUGLAS COUNTY SHERIFF'S OFFICE	5	1	6
FERGUS FALLS POLICE DEPARTMENT	78	51	129
GRANT COUNTY SHERIFF'S OFFICE	0	1	1
HENNEPIN COUNTY SHERIFF'S OFFICE	0	1	1
HENNING POLICE DEPARTMENT	4	1	5
HUBBARD COUNTY SHERIFF'S OFFICE	0	1	1
MILLE LACS COUNTY SHERIFF'S OFFICE	1	0	1
MN HIGHWAY PATROL	14	0	14
MORRISON COUNTY SHERIFF'S OFFICE	1	0	1
NEW YORK MILLS POLICE DEPARTMENT	6	1	7
NICOLLET COUNTY SHERIFF'S OFFICE	1	0	1
STATE OF NORTH DAKOTA	1	0	1
OTTER TAIL COUNTY SHERIFF'S OFFICE	62	32	94
PARKERS PRAIRIE POLICE DEPARTMENT	8	3	11
PELICAN RAPIDS POLICE DEPARTMENT	13	3	16
PERHAM POLICE DEPARTMENT	32	5	37
SHERBURNE COUNTY SHERIFF'S OFFICE	0	3	3
TODD COUNTY SHERIFF'S OFFICE	1	1	2
WADENA POLICE DEPARTMENT	1	0	1
WILKIN COUNTY SHERIFF'S OFFICE	0	2	2
WRIGHT COUNTY SHERIFF'S OFFICE	1	0	1
TOTAL 2005	257	114	371
TOTAL 2004	324	164	488
TOTAL 2003	365	147	512

CHANGE DIRECTION - DRUG EDUCATION PROGRAM REFERRALS

2005

JUVENILES

AGE	MALE	FEMALE	TOTAL
12	0	0	0
13	2	0	2
14	3	3	6
15	2	5	7
16	12	7	19
17	19	10	29
18			
TOTAL 2005	38	25	63
TOTAL 2004	40	23	63
TOTAL 2003	36	30	66

JUVENILES REFERRED BY CITY THEY LIVE IN

BATTLE LAKE	3
CLITHERALL	1
ERHARD	3
EVANSVILLE	1
FERGUS FALLS	24
HENNING	1
NEW YORK MILLS	2
OTTERTAIL	1
PELICAN RAPIDS	9
PERHAM	3
RICHVILLE	1
UNDERWOOD	7
VERGAS	6
VINING	1
TOTAL	63

KEYS TO INNERVISION*
 COGNITIVE RESTRUCTURING PROGRAM

2005

JUVENILES

AGE	MALE	FEMALE	TOTAL
12	0	0	0
13	0	0	0
14	1	0	1
15	2	0	2
16	0	0	0
17	0	0	0
18	0	0	0
	-----	-----	-----
TOTAL 2005	3	0	3
	=====	=====	=====
TOTAL 2004	0	0	0
TOTAL 2003	9	3	12

OTTER TAIL COUNTY ATTORNEY'S OFFICE
JUVENILE DIVERSION PROGRAM
TEEN TOBACCO AWARENESS SEMINAR REFERRALS

2005

<u>AGE</u>	<u>MALE</u>	<u>FEMALE</u>	<u>TOTAL</u>
12	0	0	0
13	0	0	0
14	1	1	2
15	3	0	3
16	3	1	4
17	3	2	5
18	2	0	2
<hr/>			
TOTAL 2005	12	4	16
<hr/> <hr/>			
TOTAL 2004	19	2	21
TOTAL 2003	7	7	14

JUVENILES REFERRED BY CITY THEY LIVE IN

DALTON	1
DENT	1
ERHARD	1
FERGUS FALLS	4
NEW YORK MILLS	1
PELICAN RAPIDS	2
PERHAM	4
VERGAS	1
VINING	1
<hr/>	
TOTAL	16

OTTER TAIL COUNTY ATTORNEY'S OFFICE
JUVENILE DIVERSION PROGRAM
THEFT CLINIC REFERRALS

2005

<u>AGE</u>	<u>MALE</u>	<u>FEMALE</u>	<u>TOTAL</u>
10	0	0	0
11	0	0	0
12	0	1	1
13	0	1	1
14	2	2	4
15	0	1	1
16	3	3	6
17	1	1	2
18	0	0	0
TOTAL 2005	6	9	15
TOTAL 2004	14	15	29
TOTAL 2003	16	13	29

JUVENILES REFERRED BY CITY THEY LIVE IN

BATTLE LAKE	1
ELIZABETH	1
FERGUS FALLS	6
NEW YORK MILLS	1
OTTERTAIL	1
PELICAN RAPIDS	1
PERHAM	3
ROTHSAY	1
TOTAL	15

ADULT OFFENSES PLACED UNDER SUPERVISION 2005

<u>OFFENSE</u>	<u>MALE</u>	<u>FEMALE</u>	<u>TOTAL</u>
ALCOHOL OFFENSE	2	3	5
ASSAULT	9	3	12
ASSAULT (DOMESTIC)	21	3	24
CHILD ENDANGERMENT	1	0	1
CONTRIBUTE TO DELINQUENCY OF MINOR	1	0	1
CONTROLLED SUBSTANCE CRIME	0	1	1

CRIMINAL DAMAGE TO PROPERTY	0	1	1
CRIMINAL SEXUAL CONDUCT	5	0	5
DEFEAT SECURITY ON PERSONALITY	1	0	1
DISORDERLY CONDUCT	11	3	14
DRINK/DRIVE UNDER AGE	1	0	1
DRIVING AFTER REVOCATION/CANCELLATION	26	10	36
DWI	56	16	72
FAIL TO REGISTER AS A SEX OFFENDER	1	0	1
FALSE NAME TO PEACE OFFICER	1	0	1
FORGERY	1	2	3
FURNISH ALCOHOL TO MINOR	0	1	1
INTERFERE WITH 911 CALL	7	1	8
ISSUE WORTHLESS CHECKS	1	0	1
OBSTRUCT LEGAL PROCESS	2	0	2
OPEN BOTTLE	1	0	1
POSSESSION OF DRUGS	1	0	1
POSSESSION OF DRUG PARAPHERNALIA	3	0	3
POSSESSION OF MARIJUANA	3	0	3
REFUSE TO SUBMIT TO TESTING	1	3	4
SHOPLIFTING	3	1	4
THEFT (GROSS MISDEMEANOR)	2	1	3
THEFT (MISDEMEANOR)	2	1	3
TRAFFIC (MISDEMEANOR)	17	7	24
TRESPASS	2	0	2
VIOLATION OF ORDER FOR PROTECTION	15	1	16
WRONGFULLY OBTAINING FOOD STAMPS	3	0	3
WEAPONS OFFENSE	1	0	1
TOTAL 2005	201	58	259
TOTAL 2004	204	66	270
TOTAL 2003	243	49	292

ADULT OFFENDER AGE REPORT

2005

AGE	MISD	GROSS MISD	TOTAL
18 – 20	30	7	37
21 – 30	38	32	70
31 – 40	13	34	47

41 – 50	22	18	40
51 – 60	5	8	13
61+	1	4	5
<hr/>			
TOTALS 2005	109	103	212

ADULT OFFENDER RACE REPORT

2005

<u>TYPE</u>	<u>MISD</u>	<u>GROSS MISD</u>	<u>TOTAL</u>
WHITE	98	89	187
HISPANIC	5	2	7
BLACK	4	9	13
AMERICAN INDIAN	1	3	4
UNKNOWN	1	0	1
<hr/>			
TOTAL 2005	109	103	212

OTTER TAIL COUNTY COURT SERVICES PROGRAMS FOR 2005

OFF-CON DIVERSION PROGRAM:

Referrals made: 0 (2004 = 0; 2003 = 0)

Number of Persons Supervised During 2005: 0 (2004 = 0; 2003 = 0)

DISTRICT COURT REFERRALS:

Investigations Conducted: 50 (2004 = 54; 2003 = 38)

Gross Misdemeanor Bond Studies: 3 (2004 = 1; 2003 = 0)

Domestic Abuse Investigations: 58 (2004 = 61; 2003 = 60)

Accepted into Misdemeanant Diversion Program: 7 (2004 = 3; 2003 = 8)

ADULT PRE-TRIAL RELEASE CASES 2005

	Male	Female	Total	Average Days Served
Random Testing	60	12	72	88
Remote Electronic Alcohol Monitoring	68	29	97	58

26.8% of the electronic monitoring and 26.6% of the random testing cases resulted in violation reports by Probation Officers.

ELECTRONIC MONITORING:

Adults: 97* (2004 = 88; 2003 = 65)

31* of the 97 were eligible for the REAM Grant Subsidy.

Juveniles: 0 (2004 = 0; 2003 = 0)

FINES:

Total Number of Juveniles Fined: 155 (2004 = 189; 2003 = 211)

Total Amount of Juvenile Fines Assessed: \$16,793.00 (2004 = \$19,545.00; 2003 = \$22,959.00)

Total Amount of Juvenile Fines Collected: \$8,903.00

A total of \$3,482.00 in fines was worked off through community service work.

RESTITUTION:

Total Number of Juveniles ordered to pay restitution: 48

Total Amount of Restitution Ordered: \$14,565.00

Total Amount of Restitution Paid: \$3,967.00

**OTTER TAIL COUNTY
COURT SERVICES PROGRAMS FOR 2005
(CONTINUED)**

COMMUNITY SERVICE:

234 Juveniles:	5,073.0	Community Service Work Hours Assigned
	4,005.0	Community Service Work Hours Completed in Otter Tail County
	470.0	Community Service Work Hours Completed in Other Counties
36 Adults:	1,657.0	Community Service Work Hours Assigned

1,402.0 Community Service Work Hours Completed in Otter Tail County
190.0 Community Service Work Hours Completed in Other Counties

A total of 6,730.0 community service work hours were assigned during 2005. A total of 5,407.0 community service work hours were supervised in Otter Tail County worksites. A total of 660.0 community service hours were supervised for Otter Tail County by another county. (2004 = 9,464.00 hours assigned; 2003 = 12,232.00 hours assigned)

Department of Corrections Community Service Work Supervised by Otter Tail County Community Service Specialist:

25 Adults: 2,735.0 Community Service Work Hours Assigned
1,142.5 Community Service Work Hours Completed in Otter Tail County

JUVENILE JAIL REMOVAL PROJECT:**

Number of Juveniles Held in the Temporary Hold Facility:

Delinquents: 18 (2004 = 14; 2003 = 21)

CHIPS*: 0 (2004 = 1; 2003 = 0)

A total of 18 juveniles were held in the Temporary Hold Facility.

*Child In Need of Protective Services

**The Juvenile Jail Removal Project funding ended June 30, 2003.

PROBATION RESTRUCTURE/MODIFICATION 2005

Number of Probation Case Modifications approved: 9 (2004 = 11, 2003 = 8)

Additional Community Service Hours Imposed: 98 (2004 = 31, 2003 = 16)

Additional Chemical Dependency Evaluations Assigned: 1 (2004 = 6, 2003 = 2)

Additional Random Urinalysis Testing Authorized: 1 (2004 = 1, 2003 = 3)

**OTTER TAIL COUNTY
COURT SERVICES PROGRAMS FOR 2004
(CONTINUED)**

JUVENILE OUT-OF-HOME PLACEMENTS

Out-of-Home Placements: 34 (2004 = 47; 2003 = 38)

Juvenile Secure Sex Offender Treatment: 2 (2004 = 3; 2003 = 1)

Shelter Care Placements: 10 (2004 = 13; 2003 = 12)

Juveniles Held in Secure Detention: 57 (2004 = 63; 2003 = 57)
 Average Number of Days Held in Secure Detention: 4.9 (2004 = 9.0; 2003 = 6.8)
 Delinquent Juveniles Held in Temporary Hold Facility: 18 (2004 = 14; 2003 = 21)
 Cost of Out-of-Home Placements: \$699,942.52 (2004 = \$839,811.25)
 Cost of Secure Detention: \$47,224.00 (2004=\$74,708.00)

COURT SERVICES SUPERVISION FEES 2005

	Amount Assessed	Amount Paid	
Adult Gross Misdemeanor Supervision Fees	\$3,600	\$3,145	
Adult Misdemeanor Supervision Fees	2,875	1,500	
Adult Transfer-In Gross Misdemeanor Supervision Fees	1,200	910	
Adult Transfer-In Misdemeanor Supervision Fees	500	250	
Adult Transfer Out Fees	400	300	
Community Service Work Supervision Fees	1,000	950	
Pre-Trial Conditional Release Fees	1,400	900	
Adult Informal, Unsupervised Probation Fees	430	280	
Misdemeanor Diversion Fees	150	100	
Juvenile Petty Offender Fees	225	180	
Juvenile Delinquency Fees (Findings Withheld)	0	0	
Juvenile Delinquency Fees	<u> 200 </u>	<u> 125 </u>	
	\$11,980	\$8,640.00	72.1%

Number of cases with fees waived: 2

2005 Annual Intakes

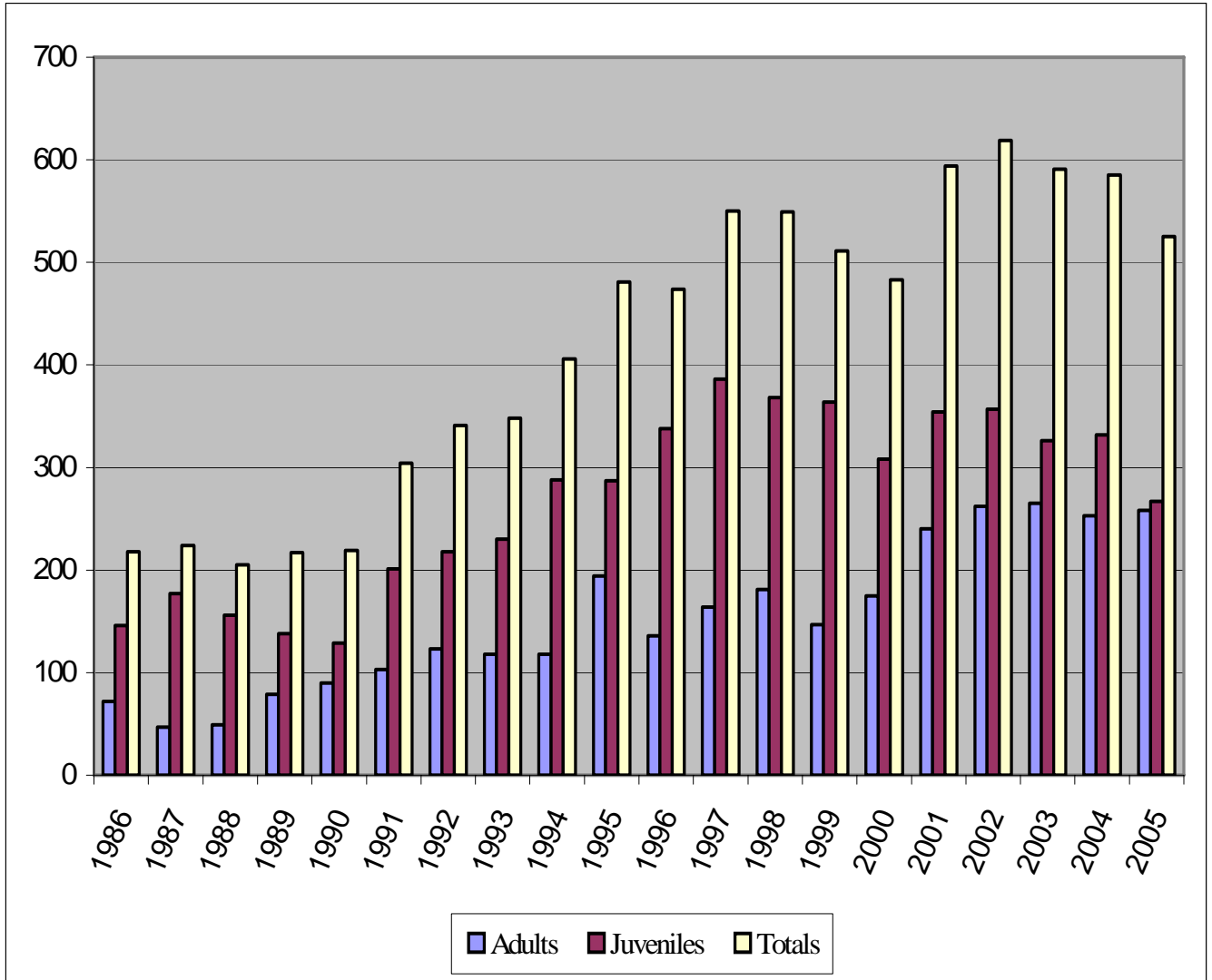
Juveniles: <u> 267 </u>	Number Drug/Alcohol related: <u> 97 </u>	Percentage: <u> 36.33% </u>
Adults: <u> 258 </u>	Number Drug/Alcohol related: <u> 146 </u>	Percentage: <u> 56.59% </u>

**Otter Tail County Court Services
Adult – Juvenile Annual Intakes**

	ADULTS	JUVENILES	TOTALS
1986	72	146	218
1987	47	177	224
1988	49	156	205
1989	79	138	217
1990	90	129	219

1991	103	201	304
1992	123	218	341
1993	118	230	348
1994	118	288	406
1995	194	287	481
1996	136	338	474
1997	164	386	550
1998	181	368	549
1999	147	364	511
2000	175	308	483
2001	240	354	594
2002	262	357	619
2003	265	326	591
2004	253	332	585
2005	258	267	525

Otter Tail County Court Services
Adult – Juvenile Annual Intakes



OTTER TAIL COUNTY COURT SERVICES

ADULT - JUVENILE MONTHLY CASELOAD

	<u>2005</u>	<u>2004</u>	<u>2003</u>	<u>2002</u>	<u>2001</u>	<u>2000</u>	<u>1999</u>	<u>1998</u>	<u>1997</u>	<u>1996</u>	<u>1995</u>	<u>1994</u>	<u>1993</u>	<u>1992</u>	<u>1991</u>	<u>1990</u>	<u>1989</u>
JANUARY	322	341	389	384	318	312	351	313	308	280	279	234	280	263	172	173	167
FEBRUARY	314	335	375	396	327	310	352	326	310	305	282	249	284	262	177	179	169
MARCH	305	320	345	382	312	322	344	325	310	297	299	244	289	260	175	177	171
APRIL	312	328	333	364	319	330	330	325	312	315	306	254	291	262	177	176	169
MAY	321	321	335	356	322	346	307	328	311	319	299	262	317	258	193	169	174
JUNE	321	333	320	350	336	346	315	338	295	317	285	260	279	269	184	156	154
JULY	294	324	323	363	337	326	307	349	329	308	278	261	281	250	187	154	157
AUGUST	309	330	331	379	327	319	301	326	318	327	265	257	253	256	182	155	156
SEPTEMBER	302	335	313	383	329	313	313	330	332	317	275	237	256	250	209	154	154
OCTOBER	319	344	333	380	344	327	312	328	325	305	295	237	273	269	227	167	169
NOVEMBER	313	347	336	392	353	323	295	338	333	317	275	239	260	282	234	174	171
DECEMBER	307	338	336	406	354	313	304	355	310	308	255	263	237	289	255	172	176
AVERAGE MONTHLY CASELOAD	312	333	339	378	332	324	319	332	316	310	283	250	275	264	198	167	165

Adult-Juvenile Average Monthly Caseload

