

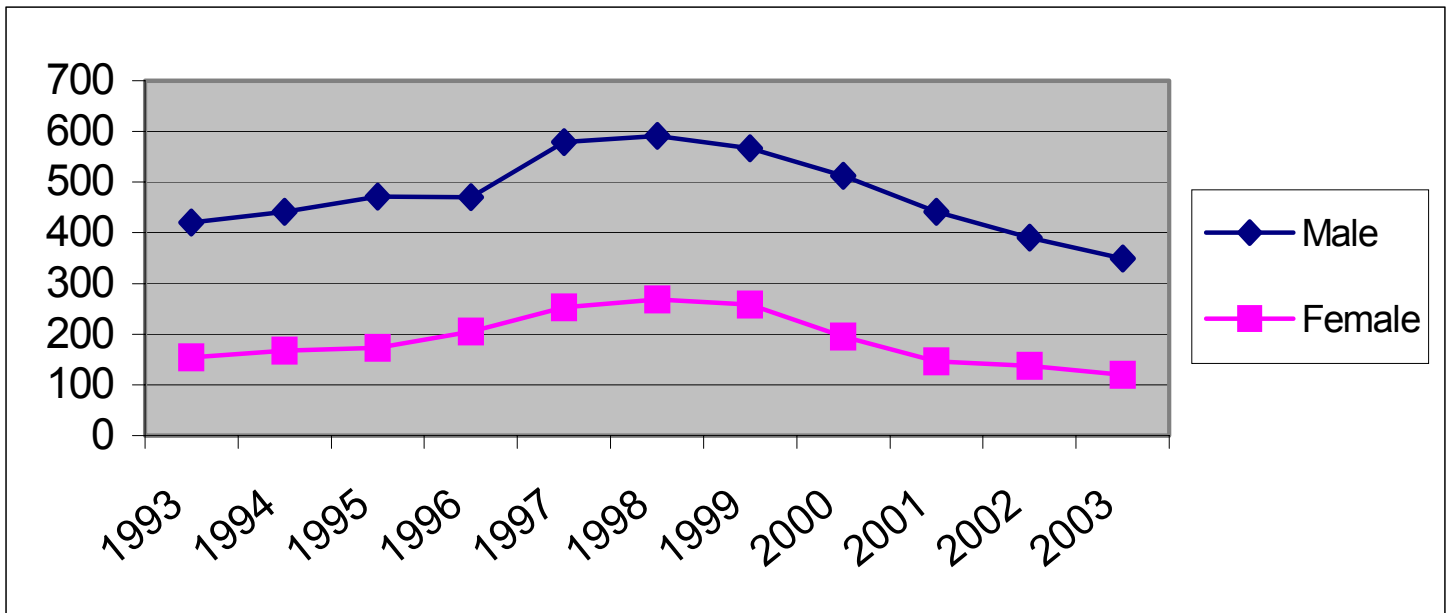
JUVENILE OFFENSES CHARGED 2003

DELINQUENT AND PETTY OFFENSES

OFFENSE	MALE	FEMALE	TOTAL
AID & ABET BURGLARY 3 RD DEG	1	0	1
ALCOHOL OFFENSE	80	48	128
ANTICIPATORY CRIMES	1	0	1
ASSAULT	17	3	20
ATTEMPTED THEFT	1	0	1
BURGLARY	7	4	11
CHILD ENDANGERMENT	0	1	1
CONSPIRACY TO COMMIT CONT SUB CRIME	1	0	1
CONTEMPT	1	1	2
CONTRIBUTING	3	0	3
CONTROLLED SUBSTANCE CRIME	8	0	8
CRIMINAL DAMAGE TO PROPERTY	21	2	23
CRIMINAL SEXUAL CONDUCT	3	0	3
CURFEW VIOLATION	4	1	5
DISORDERLY CONDUCT	26	5	31
DOMESTIC ASSAULT	7	2	9
ESCAPE/FLEE POLICE	1	0	1
FALSE NAME/INFORMATION TO POLICE	2	0	2
FALSE REPORTING CRIME	0	1	1
FIREARMS VIOLATION	4	0	4
FORGERY	1	3	4
HUNTING/FISHING VIOLATION	0	1	1
LITTERING	1	0	1
OBSTRUCT LEGAL PROCESS	2	0	2
OPEN BOTTLE	7	1	8
POSSESS FIREARM	2	0	2
POSSESSION OF DRUG PARAPHERNALIA	21	2	23
POSSESSION OF MARIJUANA	17	5	22
PURCHASING ALCOHOL	0	1	1
RECEIVING STOLEN PROPERTY	8	0	8
SHOPLIFTING	26	15	41
TAMPER WITH MOTOR VEHICLE	2	0	2
TERRORISTIC THREATS	3	0	3
THEFT (PETTY MISDEMEANOR)	6	1	7
THEFT (MISDEMEANOR)	14	5	19
THEFT (GROSS MISDEMEANOR)	3	0	3
THEFT (FELONY)	1	0	1
THEFT OF MOTOR VEHICLE	16	0	16
THROW INJUROUS MATERIALS AT MV	1	1	2
TOBACCO OFFENSE	17	12	29
TRANSACTION CARD FRAUD	0	1	1
TRESPASS	11	1	12
VIOLATION OF ORDER FOR PROTECTION	1	0	1
WEAPON ON SCHOOL GROUNDS	2	0	2
WORTHLESS CHECKS	0	3	3
TOTAL 2003	350	120	470
TOTAL 2002	390	138	528
TOTAL 2001	442	146	588

JUVENILE OFFENSES CHARGED 1991 - 2003

DELINQUENT AND PETTY OFFENSES



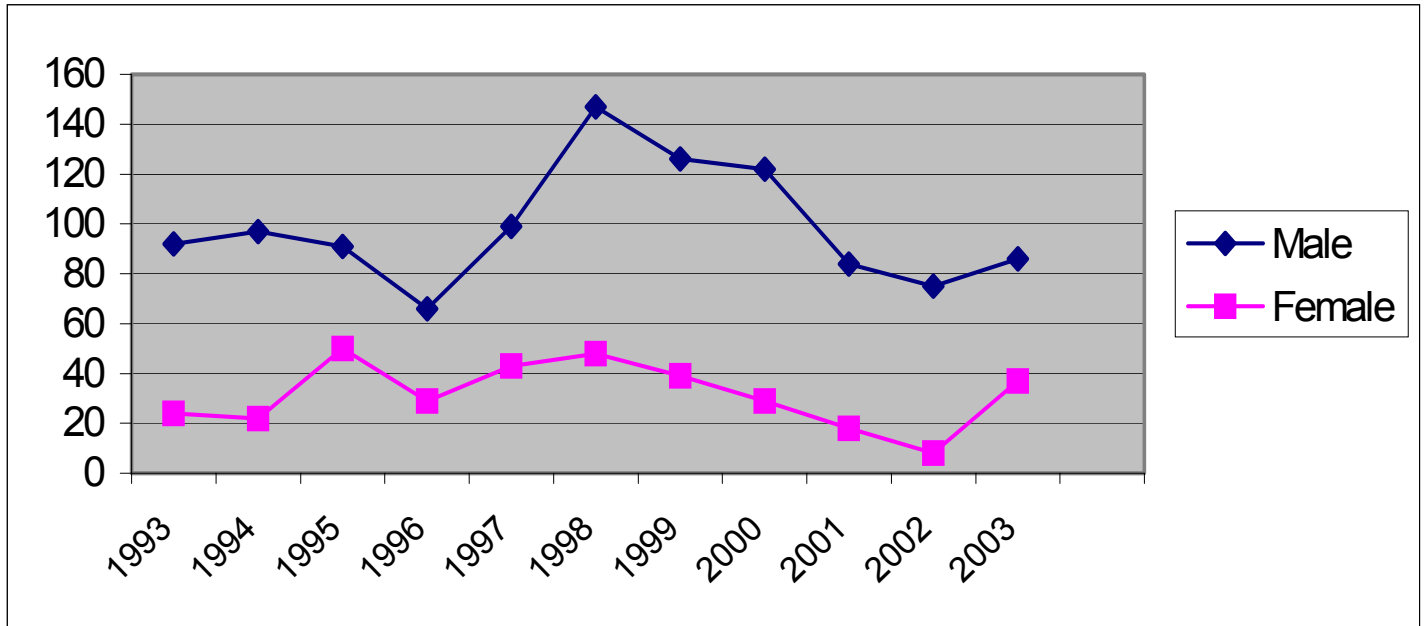
JUVENILE OFFENSES CHARGED 2003

TRAFFIC

OFFENSE	MALE	FEMALE	TOTAL
BUS STOP ARM VIOLATION	2	2	4
CARELESS/RECKLESS DRIVING	16	3	19
DRIVING AFTER SUSPENSION/CANCELLATION	3	2	5
MISCELLANEOUS TRAFFIC OFFENSES	20	6	26
NO DRIVER'S LICENSE	19	14	33
NO INSURANCE	9	2	11
SPEEDING	12	7	19
VIOLATE INSTRUCTION PERMIT	5	1	6
TOTAL 2002	86	37	123
TOTAL 2002	75	8	83
TOTAL 2001	84	18	102

JUVENILE OFFENSES CHARGED 1991 - 2003

TRAFFIC



TOP JUVENILE OFFENSES

2003

OFFENSE	MALE	FEMALE	TOTAL
ALCOHOL OFFENSE	80	48	128
SHOPLIFTING	26	15	45
NO DRIVER'S LICENSE	19	14	33
DISORDERLY CONDUCT	26	5	31
TOBACCO USE	17	12	29
TRAFFIC (MISCELLANEOUS)	20	6	26
POSSESS DRUG PARAPHERNALIA	21	2	23
CRIMINAL DAMAGE TO PROPERTY	21	2	23
POSSESS MARIJUANA	17	5	22
ASSAULT	17	3	20

JUVENILE OFFENDER AGE REPORT

2003

AGE	MALE	FEMALE	TOTAL
TEN	1	0	1
ELEVEN	1	0	1
TWELVE	4	0	4
THIRTEEN	5	0	5
FOURTEEN	14	5	19
FIFTEEN	19	7	26
SIXTEEN	50	17	67
SEVENTEEN	55	18	73
EIGHTEEN	41	15	56
TOTALS 2003	190	62	252

JUVENILE OFFENDER RACE REPORT

2003

AGE	MALE	FEMALE	TOTAL
WHITE	161	57	218
HISPANIC	11	0	11
BLACK	7	1	8
AMERICAN INDIAN	3	1	4
UNKNOWN	8	2	10
ASIAN	0	1	1
TOTALS 2003	190	62	252

JUVENILE CHARGES FILED 2003

DELINQUENT/PETTY/TRAFFIC

TYPE	MALE	FEMALE	TOTAL
DELINQUENT OFFENSES	217	43	260
PETTY OFFENSES	133	77	210
TRAFFIC	86	37	123
TOTAL 2003	436	157	593
TOTAL 2002	465	146	611
TOTAL 2001	526	164	690

JUVENILES PLACED ON PROBATION 2003*

TYPE	MALE	FEMALE	TOTAL
PETTY MISDEMEANOR	12	3	15
MISDEMEANOR	132	51	183
GROSS MISDEMEANOR	8	5	13
FELONY	38	3	41
TOTAL 2003	190	62	252
TOTAL 2002	219	61	280
TOTAL 2001	212	71	283

*Unduplicated Offenders Placed on Probation

JUVENILE SOURCE OF OFFENDERS REPORT

2003

SOURCE OF CLIENT	MALE	FEMALE	TOTAL
BATTLE LAKE POLICE DEPARTMENT	3	2	5
BECKER COUNTY SHERIFF'S OFFICE	16	9	25
BROWN COUNTY SHERIFF'S OFFICE	0	1	1
CLAY COUNTY SHERIFF'S OFFICE	4	1	5
CROW WING COUNTY SHERIFF'S OFFICE	3	0	3
DETROIT LAKES POLICE DEPARTMENT	3	2	5
DOUGLAS COUNTY SHERIFF'S OFFICE	11	8	19
FERGUS FALLS POLICE DEPARTMENT	119	62	181
GRANT COUNTY SHERIFF'S OFFICE	4	0	4
HENNING POLICE DEPARTMENT	3	0	3
MCLEOD COUNTY	0	1	1
MN DEPT OF NATURAL RESOURCES	2	1	3
MN HIGHWAY PATROL	10	7	17
NEW YORK MILLS POLICE DEPARTMENT	8	0	8
STATE OF NEBRASKA	1	0	1
STATE OF NORTH DAKOTA	2	0	2
OTTER TAIL COUNTY COURT SERVICES	1	1	2
OTTER TAIL COUNTY SHERIFF'S OFFICE	69	26	95
PARKERS PRAIRIE POLICE DEPARTMENT	6	1	7
PELICAN RAPIDS POLICE DEPARTMENT	59	15	74
PERHAM POLICE DEPARTMENT	30	4	34
SHERBURNE COUNTY SHERIFF'S OFFICE	1	0	1
ST LOUIS COUNTY SHERIFF'S OFFICE	1	0	1
TODD COUNTY	2	1	3
WADENA COUNTY SHERIFF'S OFFICE	1	2	3
WILKIN COUNTY	4	2	6
WRIGHT COUNTY SHERIFF'S OFFICE	1	1	2
YELLOW MEDICINE COUNTY	1	0	1
TOTAL 2003	365	147	512
TOTAL 2002	390	131	521
TOTAL 2001	373	138	510

CHANGE DIRECTION - DRUG EDUCATION PROGRAM REFERRALS

2003

JUVENILES

AGE	MALE	FEMALE	TOTAL
12	0	0	0
13	0	0	0
14	1	0	1
15	5	5	10
16	8	4	12
17	11	12	23
18	11	9	20
<hr style="border: 0; border-top: 1px solid black;"/>			
TOTAL 2003	36	30	66
<hr style="border: 0; border-top: 3px double black;"/>			
TOTAL 2002	74	38	112
TOTAL 2001	47	43	91

JUVENILES REFERRED BY CITY THEY LIVE IN

ASHBY	
BATTLE LAKE	3
BLUFFTON	1
DALTON	2
DETROIT LAKES	1
ELBOW LAKE	1
ERHARD	3
FERGUS FALLS	27
HENNING	1
NEW YORK MILLS	1
OTTERTAIL	1
PARKERS PRAIRIE	5
PELICAN RAPIDS	8
PERHAM	4
ROTHSAY	2
UNDERWOOD	1
VERGAS	2
VINING	1
WADENA	2
TOTAL	66

**KEYS TO INNERVISION*
 COGNITIVE RESTRUCTURING PROGRAM**

2003

JUVENILES

AGE	MALE	FEMALE	TOTAL
12	0	0	0
13	0	0	0
14	0	0	0
15	1	1	2
16	2	2	4
17	1	0	1
18	5	0	5
	<hr/>	<hr/>	<hr/>
TOTAL 2003	9	3	12
	<hr/> <hr/>	<hr/> <hr/>	<hr/> <hr/>
TOTAL 2002	26	6	32
TOTAL 2001	6	2	8

JUVENILES REFERRED BY CITY THEY LIVE IN

DENT	1
ELIZABETH	1
FERGUS FALLS	7
HENNING	1
PELICAN RAPIDS	1
UNDERWOOD	1
TOTAL	12

*Keys to Innervision funding ended June 30, 2003.

**OTTER TAIL COUNTY ATTORNEY'S OFFICE
 JUVENILE DIVERSION PROGRAM
 TEEN TOBACCO AWARENESS* SEMINAR REFERRALS**

2003

AGE	MALE	FEMALE	TOTAL
12	0	0	0
13	0	0	0
14	2	0	2
15	0	3	3
16	0	1	1
17	1	1	2
18	4	2	6
TOTAL 2003	7	7	14
TOTAL 2002	10	8	18
TOTAL 2001	13	2	15

JUVENILES REFERRED BY CITY THEY LIVE IN

DENT	1
ERHARD	1
FERGUS FALLS	6
NEW YORK MILLS	2
PARKERS PRAIRIE	1
PELICAN RAPIDS	2
VERGAS	1
TOTAL	14

*Teen Tobacco Awareness Program ended May 1, 2003, however, juvenile tobacco offenders are currently referred to the Minnesota Institute Change Direction drug education program.

**OTTER TAIL COUNTY ATTORNEY'S OFFICE
 JUVENILE DIVERSION PROGRAM
 THEFT CLINIC REFERRALS**

2003

AGE	MALE	FEMALE	TOTAL
10	0	0	0
11	1	0	1
12	0	0	0
13	1	0	1
14	1	3	4
15	3	4	7
16	3	1	4
17	3	3	6
18	4	2	6
	<hr/>	<hr/>	<hr/>
TOTAL 2003	16	13	29
	<hr/> <hr/>	<hr/> <hr/>	<hr/> <hr/>
TOTAL 2002	23	15	38
TOTAL 2001	30	18	48

JUVENILES REFERRED BY CITY THEY LIVE IN

BATTLE LAKE	1
CLITHERALL	1
DALTON	1
DENT	2
ERHARD	2
FERGUS FALLS	11
NEW YORK MILLS	2
OTTERTAIL	2
PELICAN RAPIDS	4
VERGAS	2
WADENA	1
	<hr/>
TOTAL	29

ADULT OFFENSES PLACED UNDER SUPERVISION 2003

OFFENSE	MALE	FEMALE	TOTAL
ALCOHOL OFFENSE	6	1	7
ASSAULT	6	2	8
ASSAULT (DOMESTIC)	30	3	33
CHILD ENDANGERMENT	0	1	1
CRIMINAL DAMAGE TO PROPERTY	4	0	4
CRIMINAL SEXUAL CONDUCT	2	0	2
DISORDERLY CONDUCT	8	1	9
DRINK/DRIVE UNDER AGE	2	1	3
DRIVING AFTER REVOCATION	25	2	27
DWI	69	17	86
FALSE NAME TO PEACE OFFICER	1	0	1
FINANCIAL TRANSACTION CARD FRAUD	1	1	2
FORGERY	1	0	1
FURNISH ALCOHOL TO MINOR	0	1	1
GAMBLING FRAUD	1	0	1
INTERFERE WITH 911 CALL	8	0	8
ISSUE WORTHLESS CHECKS	5	3	8
HARRASSMENT	1	0	1
HUNTING/FISHING VIOLATION	2	0	2
MALICIOUS PUNISHMENT OF A CHILD	1	0	1
NEGLECT OF VULNERABLE ADULT	0	1	1
OBSTRUCT LEGAL PROCESS	2	1	3
OPEN BOTTLE	2	0	2
POSSESSION OF DRUG PARAPHERNALIA	3	1	4
POSSESSION OF MARIJUANA	4	1	5
RECEIVE STOLEN PROPERTY	2	1	3
REFUSE TO SUBMIT TO TESTING	9	1	10
SHOPLIFTING	4	0	4
TERRORISTIC THREATS	1	0	1
THEFT (GROSS MISDEMEANOR)	2	1	3
THEFT (MISDEMEANOR)	4	1	5
THEFT BY CHECK	0	1	1
TRAFFIC (MISDEMEANOR)	19	5	24
TRESPASS	2	0	2
VIOLATION OF ORDER FOR PROTECTION	10	2	12
VIOLATION OF RESTORATION ORDER	5	0	5
WEAPONS OFFENSE	1	0	1
TOTAL 2003	243	49	292
TOTAL 2002	245	76	321
TOTAL 2001	276	71	347

ADULT OFFENDER AGE REPORT

2003

<u>AGE</u>	<u>MISD</u>	<u>GROSS MISD</u>	<u>TOTAL</u>
18 – 20	28	8	36
21 – 30	39	36	75
31 – 40	27	24	51
41 – 50	25	25	50
51 – 60	8	4	12
61+	0	5	5
TOTALS 2003	127	102	229

ADULT OFFENDER RACE REPORT

2003

<u>TYPE</u>	<u>MISD</u>	<u>GROSS MISD</u>	<u>TOTAL</u>
WHITE	110	90	200
HISPANIC	4	2	6
BLACK	8	6	14
AMERICAN INDIAN	2	3	5
UNKNOWN	3	1	4
TOTAL 2003	127	102	229

OTTER TAIL COUNTY COURT SERVICES PROGRAMS FOR 2003

OFF-CON DIVERSION PROGRAM:

Referrals made: 0 (2002 = 1; 2001 = 3)

Number of Persons Supervised During 2003: 0 (2002 = 2; 2001 = 4)

DISTRICT COURT REFERRALS:

Investigations Conducted: 38 (2002 = 25; 2001 = 31)

Gross Misdemeanor Bond Studies: 0 (2002 = 1; 2001 = 5)

Domestic Abuse Investigations: 60 (2002 = 54; 2001 = 65)

Accepted into Misdemeanant Diversion Program: 8 (2002 = 5; 2001 = 6)

ADULT PRE-TRIAL RELEASE CASES 2003

	Male	Female	Total	Average Days Served
Random Testing	63	3	66	83
Remote Electronic Alcohol Monitoring	<u>51</u>	<u>14</u>	<u>65</u>	76
	114	17	131	

ELECTRONIC MONITORING:

Adults: 65* (2002 = 46; 2001 = 75)
30* of the 65 were eligible for the REAM Grant Subsidy.

Juveniles: 0 (2002 = 0; 2001 = 0)

FINES:

Total Number of Juveniles Fined: 211 (2002 = 230; 2001 = 216)

Total Amount of Juvenile Fines Assessed: \$22,959.00 (2002 = \$25,138.00; 2001 = \$23,325.00)

Total Amount of Juvenile Fines Collected: \$12,046.00

A total of \$2,539.00 in fines was worked off through community service work.

RESTITUTION:

Total Number of Juveniles ordered to pay restitution: 53

Total Amount of Restitution Ordered: \$40,509.00

Total Amount of Restitution Paid: \$23,474.00

Total Amount of Restitution worked off in 2003 through the Juvenile Restitution Work Program:
\$2,113.85

**OTTER TAIL COUNTY
COURT SERVICES PROGRAMS FOR 2003
(CONTINUED)**

COMMUNITY SERVICE:

305 Juveniles:	7,656.0 5,359.0 673.0	Community Service Work Hours Assigned Community Service Work Hours Completed in Otter Tail County Community Service Work Hours Completed in Other Counties
66 Adults:	4,576.0 2,503.0 204.0	Community Service Work Hours Assigned Community Service Work Hours Completed in Otter Tail County Community Service Work Hours Completed in Other Counties

A total of 12,232.0 community service work hours were assigned during 2003. A total of 7,862.0 community service work hours were supervised through Otter Tail County Court Services. A total of 877 community service hours were supervised for Otter Tail County by another county. (2002 = 12,859.00 hours assigned; 2001 = 10,218.00 hours assigned)

Department of Corrections Community Service Work Supervised by Otter Tail County Community Service Specialist:

30 Adults	4,046.0 1,440.5	Community Service Work Hours Assigned Community Service Work Hours Completed in Otter Tail County
-----------	--------------------	--

JUVENILE JAIL REMOVAL PROJECT:**

Number of Juveniles Held in the Temporary Hold Facility:

Delinquents:	21	(2002 = 29; 2001 = 32)	
*CHIPS:	1	(2002 = 0; 2001 = 2)	(*Child In Need of Protective Services)

A total of 22 juveniles were held in the Temporary Hold Facility.

**The Juvenile Jail Removal Project funding ended June 30, 2003.

JUVENILE RESTITUTION WORK PROGRAM*:

Number of Juveniles Referred to Program:	<u>14</u>	(2002 = 26; 2001 = 16)
Number of Hours Worked:	<u>497.38</u>	(2002 = 1049.70; 2001 = 1197.42)
Amount Paid Out to Victims:	<u>\$2,113.85</u>	(2002 = \$4,461.22; 2001 = \$5,087.35)

*The Juvenile Restitution Work Program funding ended June 30, 2003.

**OTTER TAIL COUNTY
COURT SERVICES PROGRAMS FOR 2003
(CONTINUED)**

JUVENILE COMMITMENTS TO THE MINNESOTA COMMISSIONER OF CORRECTIONS: 0
(2002 = 0)
(2001 = 0)

JUVENILE OUT-OF-HOME PLACEMENTS

Out-of-Home Placements: 38 (2002 = 47; 2001 = 36)

Juvenile Secure Sex Offender Treatment: 1 (2002 = 0; 2001 = 0)

Shelter Care Placements: 12 (2002 = 15; 2001 = 11)

Juveniles Held in Secure Detention: 57 (2001 = 54; 2001 = 49)

Average Number of Days Held in Secure Detention: 6.88 (2002 = 8.1; 2001 = 9.5)

Delinquent Juveniles Held in Temporary Hold Facility: 21 (2002 = 29; 2001 = 32)

PROBATION RESTRUCTURE/MODIFICATION 2003

Number of Probation Case Modifications approved: 8 (2002 = 8, 2001 = 8)

Additional Community Service Hours Imposed: 16 (2002 = 37, 2001 = 66)

Additional Chemical Dependency Evaluations Assigned: 2 (2002 = 2, 2001 = 3)

Additional Random Urinalysis Testing Authorized: 3 (2002 = 2, 2001 = 2)

COURT SERVICES SUPERVISION FEES 2003

	Amount Assessed	Amount Paid	
Gross Misdemeanor Supervision Fees	\$2,100.00	\$700.00	
Misdemeanor Supervision Fees	375.00	150.00	
Transfer-In Gross Misdemeanor Supervision Fees	450.00	170.00	
Transfer-In Misdemeanor Supervision Fees	250.00	175.00	
Community Service Work Supervision Fees	<u>650.00</u>	<u>600.00</u>	
	\$3,825.00	\$1,795.00	46.93%

Number of cases with fees waived: 3

2003 Annual Intakes

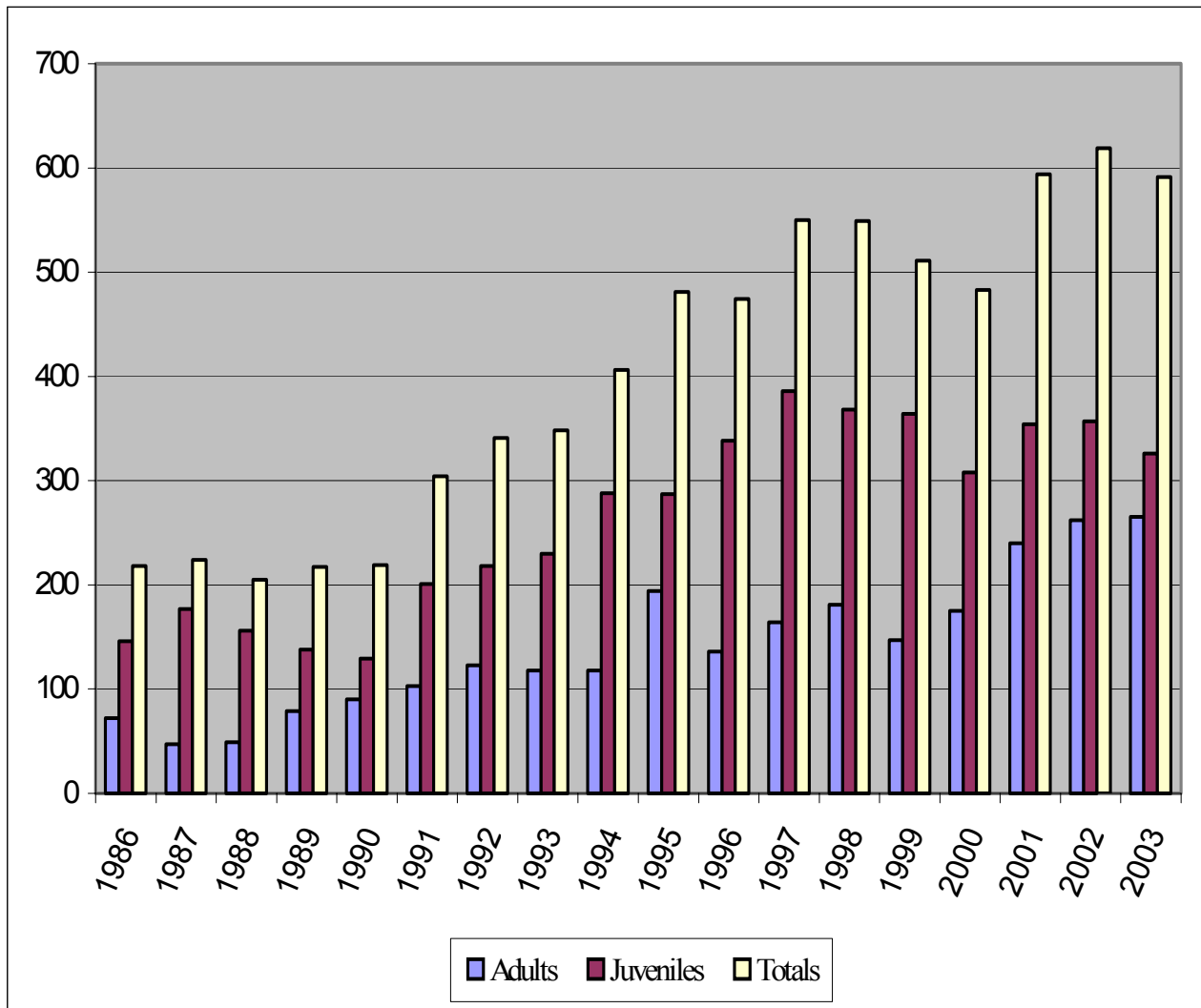
Juveniles: <u> 326 </u>	Number Drug/Alcohol related: <u> 122 </u>	Percentage: <u> 37.42% </u>
Adults: <u> 265 </u>	Number Drug/Alcohol related: <u> 147 </u>	Percentage: <u> 55.47% </u>

Otter Tail County Court Services Adult – Juvenile Annual Intakes

	ADULTS	JUVENILES	TOTALS
1985	92	162	254
1986	72	146	218

1987	47	177	224
1988	49	156	205
1989	79	138	217
1990	90	129	219
1991	103	201	304
1992	123	218	341
1993	118	230	348
1994	118	288	406
1995	194	287	481
1996	136	338	474
1997	164	386	550
1998	181	368	549
1999	147	364	511
2000	175	308	483
2001	240	354	594
2002	262	357	619
2003	265	326	591

**Otter Tail County Court Services
Adult – Juvenile Annual Intakes**



OTTER TAIL COUNTY COURT SERVICES

ADULT - JUVENILE MONTHLY CASELOAD

	<u>2003</u>	<u>2002</u>	<u>2001</u>	<u>2000</u>	<u>1999</u>	<u>1998</u>	<u>1997</u>	<u>1996</u>	<u>1995</u>	<u>1994</u>	<u>1993</u>	<u>1992</u>	<u>1991</u>	<u>1990</u>	<u>1989</u>	<u>1988</u>	<u>1987</u>
JANUARY	389	384	318	312	351	313	308	280	279	234	280	263	172	173	167	170	155
FEBRUARY	375	396	327	310	352	326	310	305	282	249	284	262	177	179	169	157	160
MARCH	345	382	312	322	344	325	310	297	299	244	289	260	175	177	171	157	155
APRIL	333	364	319	330	330	325	312	315	306	254	291	262	177	176	169	167	163
MAY	335	356	322	346	307	328	311	319	299	262	317	258	193	169	174	166	156
JUNE	320	350	336	346	315	338	295	317	285	260	279	269	184	156	154	164	154
JULY	323	363	337	326	307	349	329	308	278	261	281	250	187	154	157	156	151
AUGUST	331	379	327	319	301	326	318	327	265	257	253	256	182	155	156	161	146
SEPTEMBER	313	383	329	313	313	330	332	317	275	237	256	250	209	154	154	170	162
OCTOBER	333	380	344	327	312	328	325	305	295	237	273	269	227	167	169	153	168
NOVEMBER	336	392	353	323	295	338	333	317	275	239	260	282	234	174	171	146	172
DECEMBER	336	406	354	313	304	355	310	308	255	263	237	289	255	172	176	158	178
AVERAGE MONTHLY CASELOAD	339	378	332	324	319	332	316	310	283	250	275	264	198	167	165	160	160

Adult-Juvenile Average Monthly Caseload

