

JUVENILE OFFENSES CHARGED 2002

DELINQUENT AND PETTY OFFENSES

OFFENSE	MALE	FEMALE	TOTAL
AID & ABET THEFT	2	0	2
ALCOHOL OFFENSE	122	65	187
ARSON	1	0	1
ASSAULT	11	5	16
BURGLARY	17	2	19
CONSPIRACY TO COMMIT THEFT	0	1	1
CONTRIBUTING	0	1	1
CONTROLLED SUBSTANCE CRIME	8	2	10
CRIMINAL DAMAGE TO PROPERTY	16	1	17
CRIMINAL SEXUAL CONDUCT	5	1	6
CURFEW VIOLATION	2	5	7
DISORDERLY CONDUCT	23	0	23
DOMESTIC ASSAULT	7	2	9
ESCAPE/FLEE POLICE	1	0	1
FALSE NAME/INFORMATION TO POLICE	2	0	2
FIREWORKS OFFENSE	1	0	1
FORGERY	1	2	3
HUNTING/FISHING VIOLATIONS	5	0	5
INDECENT EXPOSURE	2	0	2
INTERFERE WITH 911 CALL	3	0	3
LITTERING	1	2	3
OBSTRUCT LEGAL PROCESS	2	2	4
POSSESSION OF DRUG PARAPHERNALIA	28	8	36
POSSESSION OF MARIJUANA	19	1	20
RECEIVING STOLEN PROPERTY	2	1	3
RECKLESS HANDLING OF FIREARM	1	1	2
ROBBERY	1	0	1
SHOPLIFTING	22	11	33
TAMPER WITH MOTOR VEHICLE	1	2	3
TATTOO MINOR	1	0	1
TERRORISTIC THREATS	1	0	1
THEFT (PETTY MISDEMEANOR)	5	1	6
THEFT (MISDEMEANOR)	35	6	41
THEFT (GROSS MISDEMEANOR)	4	2	6
THEFT (FELONY)	2	0	2
THEFT OF MOTOR VEHICLE	9	0	9
THROW INJUROUS MATERIALS	1	0	1
TOBACCO OFFENSE	22	13	35
TRANSACTION CARD FRAUD	1	0	1
TRESPASS	3	1	4
TOTAL 2002	390	138	528
TOTAL 2001	442	146	588

TOTAL 2000

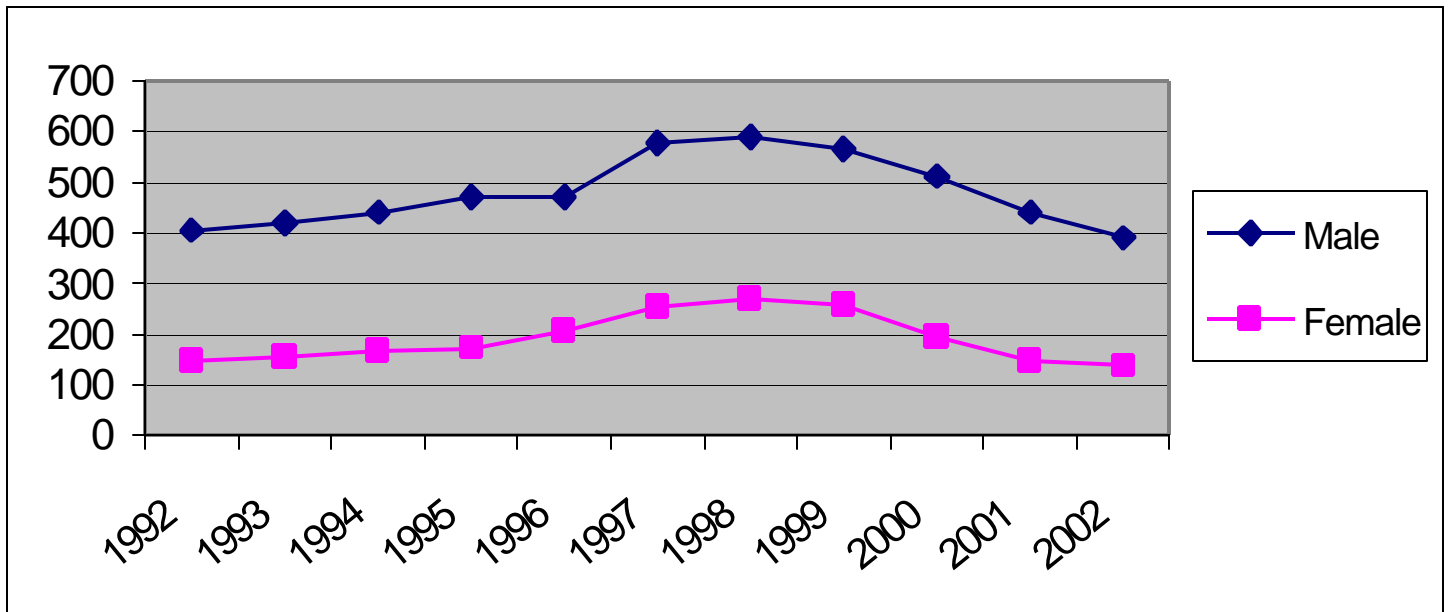
512

195

707

JUVENILE OFFENSES CHARGED 1991 - 2002

DELINQUENT AND PETTY OFFENSES



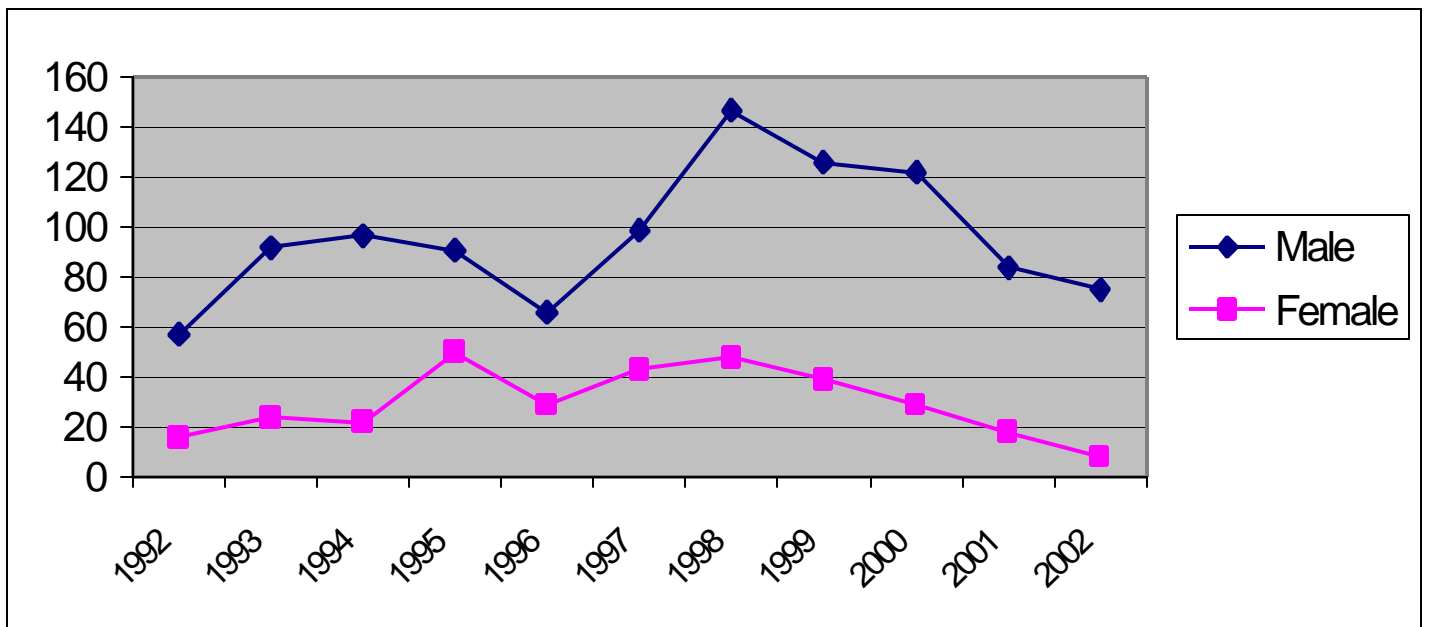
JUVENILE OFFENSES CHARGED 2002

TRAFFIC

OFFENSE	MALE	FEMALE	TOTAL
BUS STOP ARM VIOLATION	2	2	4
CARELESS DRIVING	11	0	11
DRIVING AFTER SUSPENSION	2	1	3
LEAVING SCENE OF ACCIDENT	3	0	3
MISCELLANEOUS TRAFFIC OFFENSES	15	1	16
NO DRIVER'S LICENSE	23	2	25
NO INSURANCE	12	2	14
SPEEDING	7	0	7
	-----	-----	-----
TOTAL 2002	75	8	83
	=====	=====	=====
TOTAL 2001	84	18	102
TOTAL 2000	122	29	151

JUVENILE OFFENSES CHARGED 1991 - 2002

TRAFFIC



TOP JUVENILE OFFENSES

2002

OFFENSE	MALE	FEMALE	TOTAL
ALCOHOL OFFENSE	122	65	187
THEFT (MISDEMEANOR)	35	6	41
POSSESS DRUG PARAPHERNALIA	28	8	36
TOBACCO USE	22	13	35
SHOPLIFTING	22	11	33
NO DRIVER'S LICENSE	23	2	25
DISORDERLY CONDUCT	23	0	23
POSSESS MARIJUANA	19	1	20
BURGLARY	17	2	19
CRIMINAL DAMAGE TO PROPERTY	16	1	17

JUVENILE OFFENDER AGE REPORT

2002

AGE	MALE	FEMALE	TOTAL
TEN	0	0	0
ELEVEN	1	0	1
TWELVE	6	1	7
THIRTEEN	3	0	3
FOURTEEN	13	8	21
FIFTEEN	31	9	40
SIXTEEN	44	11	55
SEVENTEEN	78	22	100
EIGHTEEN	43	10	53
TOTALS 2002	219	61	280

JUVENILE OFFENDER RACE REPORT

2002

AGE	MALE	FEMALE	TOTAL
WHITE	193	57	250
HISPANIC	11	1	12
BLACK	7	0	7
AMERICAN INDIAN	4	2	6
UNKNOWN	3	0	3
ASIAN	1	1	2

TOTALS 2002

219

61

280

JUVENILE CHARGES FILED 2002

DELINQUENT/PETTY/TRAFFIC

<u>TYPE</u>	<u>MALE</u>	<u>FEMALE</u>	<u>TOTAL</u>
DELINQUENT OFFENSES	217	43	260
PETTY OFFENSES	173	95	268
TRAFFIC	75	8	83
	-----	-----	-----
TOTAL 2002	465	146	611
	=====	=====	=====
TOTAL 2001	526	164	690
TOTAL 2000	634	224	858

JUVENILES PLACED ON PROBATION 2002*

<u>TYPE</u>	<u>MALE</u>	<u>FEMALE</u>	<u>TOTAL</u>
PETTY MISDEMEANOR	6	3	9
MISDEMEANOR	155	50	205
GROSS MISDEMEANOR	18	4	22
FELONY	40	4	44
	-----	-----	-----
TOTAL 2002	219	61	280
	=====	=====	=====
TOTAL 2001	212	71	283
TOTAL 2000	182	63	244

*Unduplicated Offenders Placed on Probation

JUVENILE SOURCE OF OFFENDERS REPORT 2002

SOURCE OF CLIENT	MALE	FEMALE	TOTAL
ANOKA COUNTY SHERIFF'S OFFICE	2	0	2
BATTLE LAKE POLICE DEPARTMENT	3	3	6
BECKER COUNTY SHERIFF'S OFFICE	6	4	10
CHIPPEWA COUNTY SHERIFF'S OFFICE	1	0	1
CLAY COUNTY SHERIFF'S OFFICE	4	2	6
CROW WING COUNTY SHERIFF'S OFFICE	2	0	2
DAKOTA COUNTY SHERIFF'S OFFICE	1	0	1
DETROIT LAKES POLICE DEPARTMENT	2	2	4
DOUGLAS COUNTY SHERIFF'S OFFICE	11	2	13
FERGUS FALLS POLICE DEPARTMENT	121	48	169
GRANT COUNTY SHERIFF'S OFFICE	7	1	8
HENNING POLICE DEPARTMENT	8	0	8
STATE OF ILLINOIS	1	0	1
ITASKA COUNTY	2	0	2
MAHNOMEN COUNTY	2	0	2
MCLEOD COUNTY	0	1	1
MN DEPT OF NATURAL RESOURCES	7	1	8
MN HIGHWAY PATROL	10	3	13
NEW YORK MILLS POLICE DEPARTMENT	15	6	21
STATE OF NORTH DAKOTA	2	2	4
OTTER TAIL COUNTY SHERIFF'S OFFICE	88	29	117
PARKERS PRAIRIE POLICE DEPARTMENT	11	2	13
PELICAN RAPIDS POLICE DEPARTMENT	44	12	56
PENNINGTON COUNTY	1	0	1
PERHAM POLICE DEPARTMENT	20	7	27
STEARNS COUNTY SHERIFF'S OFFICE	2	0	2
TODD COUNTY	3	0	3
TRAVERSE COUNTY	1	0	1
WADENA COUNTY SHERIFF'S OFFICE	10	4	14
WILKIN COUNTY	2	2	4
STATE OF WISCONSIN	1	0	1
TOTAL 2002	390	131	521
TOTAL 2001	373	138	510
TOTAL 2000	510	194	704

CHANGE DIRECTION - DRUG EDUCATION PROGRAM REFERRALS

2002

JUVENILES

AGE	MALE	FEMALE	TOTAL
12	0	0	0
13	0	0	0
14	2	1	3
15	0	3	3
16	13	5	18
17	35	14	49
18	24	15	39

TOTAL 2002	74	38	112
=====			
TOTAL 2001	47	43	91
TOTAL 2000	65	55	120

JUVENILES REFERRED BY CITY THEY LIVE IN

ASHBY	1
DALTON	5
DEER CREEK	4
DENT	3
ELIZABETH	2
ERHARD	4
FERGUS FALLS	37
FRAZEE	1
HENNING	8
HEWITT	1
NEW YORK MILLS	2
OTTERTAIL	6
PARKERS PRAIRIE	5
PELICAN RAPIDS	14
PERHAM	14
ROTHSAY	2
SEBEKA	1
UNDERWOOD	1
VERGAS	1
TOTAL	112

KEYS TO INNERVISION COGNITIVE RESTRUCTURING PROGRAM

2002

JUVENILES

AGE	MALE	FEMALE	TOTAL
12	0	0	0
13	0	0	0
14	1	1	2
15	4	2	6
16	6	1	7
17	10	2	12
18	5	0	5
TOTAL 2002	26	6	32
TOTAL 2001	6	2	8
TOTAL 2000	5	6	11

JUVENILES REFERRED BY CITY THEY LIVE IN

BATTLE LAKE	1
DENT	1
FERGUS FALLS	19
HENNING	3
PELICAN RAPIDS	3
ROTHSAY	3
UNDERWOOD	2
TOTAL	32

**OTTER TAIL COUNTY ATTORNEY'S OFFICE
 JUVENILE DIVERSION PROGRAM
 TEEN TOBACCO AWARENESS SEMINAR REFERRALS**

2002

AGE	MALE	FEMALE	TOTAL
12	0	0	0
13	0	1	1
14	0	0	0
15	1	1	2
16	3	4	7
17	3	1	4
18	3	1	4
	10	8	18
TOTAL 2002	10	8	18
TOTAL 2001	13	2	15
TOTAL 2000	20	13	33

JUVENILES REFERRED BY CITY THEY LIVE IN

BATTLE LAKE	2
DALTON	1
FERGUS FALLS	4
NEW YORK MILLS	4
PARKERS PRAIRIE	1
PELICAN RAPIDS	4
PERHAM	2
TOTAL	18

**OTTER TAIL COUNTY ATTORNEY'S OFFICE
 JUVENILE DIVERSION PROGRAM
 THEFT CLINIC REFERRALS**

2002

<u>AGE</u>	<u>MALE</u>	<u>FEMALE</u>	<u>TOTAL</u>
10	0	0	0
11	1	0	1
12	0	2	2
13	3	1	4
14	4	1	5
15	2	4	6
16	4	3	7
17	8	2	10
18	1	2	3
	-----	-----	-----
TOTAL 2002	23	15	38
	=====	=====	=====
TOTAL 2001	30	18	48
TOTAL 2000	30	21	51

JUVENILES REFERRED BY CITY THEY LIVE IN

BATTLE LAKE	2
DALTON	2
DENT	2
FERGUS FALLS	16
NEW YORK MILLS	3
OTTERTAIL	3
PARKERS PRAIRIE	4
PELICAN RAPIDS	1
PERHAM	3

RICHVILLE	1	
VINING	1	
TOTAL	38	

ADULT OFFENSES PLACED UNDER SUPERVISION 2002

OFFENSE	MALE	FEMALE	TOTAL
ALCOHOL OFFENSE	9	3	12
ASSAULT	5	5	10
ASSAULT (DOMESTIC)	29	7	36
BURNING PROHIBITED MATERIALS	1	2	3
CHILD ENDANGERMENT	2	0	2
CRIMINAL DAMAGE TO PROPERTY	5	2	7
CRIMINAL SEXUAL CONDUCT	2	0	2
DISORDERLY CONDUCT	17	0	17
DNR FISHHOUSE CHARGES	1	0	1
DRIVING AFTER REVOCATION	34	7	41
DWI	71	21	92
FAIL TO PAY CHILD SUPPORT	1	0	1
FAIL TO REPORT FOR JURY DUTY	0	1	1
FALSE NAME TO PEACE OFFICER	1	2	3
FALSELY REPORTING A CRIME	0	1	1
FLEE POLICE	1	0	1
FORGERY	1	0	1
INTERFERE WITH 911 CALL	2	0	2
ISSUE WORTHLESS CHECKS	6	3	9
HARRASSING PHONE CALLS	0	1	1
MALICIOUS PUNISHMENT OF A CHILD	1	1	2
NO DRIVERS LICENSE	1	0	1
OBSTRUCT LEGAL PROCESS	5	0	5
OPEN BOTTLE	2	1	3
POSSESSION OF DRUG PARAPHERNALIA	5	0	5
POSSESSION OF MARIJUANA	4	1	5
REFUSE TO SUBMIT TO TESTING	4	1	5
TAMPER WITH MOTOR VEHICLE	1	0	1
TATTOO MINOR	1	0	1
THEFT (GROSS MISDEMEANOR)	0	3	3
THEFT (MISDEMEANOR)	9	3	12
TRAFFIC (MISDEMEANOR)	15	11	26
TRESPASS	1	0	1
VIOLATION OF ORDER FOR PROTECTION	6	0	6
WEAPONS OFFENSE	2	0	2
TOTAL 2002	245	76	321

TOTAL 2001	276	71	347
TOTAL 2000	297	83	380

ADULT OFFENDER AGE REPORT

2002

AGE	MISD	GROSS MISD	TOTAL
18 – 20	19	9	28
21 – 30	44	34	78
31 – 40	30	29	59
41 – 50	26	14	40
51 – 60	6	12	18
61 +	1	0	1
TOTALS 2002	126	98	224

ADULT OFFENDER RACE REPORT

2002

AGE	MISD	GROSS MISD	TOTAL
WHITE	108	87	195
HISPANIC	5	1	6
BLACK	8	5	13
AMERICAN INDIAN	3	2	5

UNKNOWN

2

3

5

TOTALS 2002

126

98

224

OTTER TAIL COUNTY COURT SERVICES PROGRAMS FOR 2002

OFF-CON DIVERSION PROGRAM:

Referrals made: 1 (2001 = 3; 2000 = 4)

Persons Accepted into the Program: 1 (2001 = 3; 2000 = 3)

Persons Rejected from the Program: 0 (2001 = 0; 2000 = 1)

Number of Persons Supervised During 2002: 2 (2001 = 4; 2000 = 7)

DISTRICT COURT REFERRALS:

Investigations Conducted: 25 (2001 = 31; 2000 = 24)

Gross Misdemeanor Bond Studies: 1 (2001 = 5; 2000 = 2)

Domestic Abuse Investigations: 54 (2001 = 65; 2000 = 61)

Accepted into Misdemeanant Diversion Program: 5 (2001 = 6; 2000 = 5)

ELECTRONIC MONITORING:

Adults: 46* (2001 = 75; 2000 = 12)

*22 of the 46 were eligible for the REAM Grant Subsidy.

Juveniles: 0 (2001 = 0; 2000 = 1)

FINES:

Total Number of Juveniles Fined: 230 (2001 = 216; 2000 = 208)

Total Amount of Juvenile Fines Assessed: \$25,138.00 (2001 = \$23,325.00; 2000 = \$28,304.60)

Total Amount of Juvenile Fines Collected: \$13,246.00

A total of \$2,587.00 in fines was worked off through community service work.

RESTITUTION:

Total Number of Juveniles ordered to pay restitution: 64

Total Amount of Restitution Ordered: \$17,166.00

Total Amount of Restitution Paid: \$7,192.00

Total Amount of Restitution Worked off in 2002 through the Juvenile Restitution Work Program: \$4,461.22

OTTER TAIL COUNTY
COURT SERVICES PROGRAMS FOR 2002
(CONTINUED)

COMMUNITY SERVICE:

370 Juveniles: 8,657.0 Community Service Work Hours Assigned
 5,745.0 Community Service Work Hours Completed in Otter Tail County
 455.0 Community Service Work Hours Completed in Other Counties

67 Adults: 4,202.0 Community Service Work Hours Assigned
 2,126.0 Community Service Work Hours Completed in Otter Tail County
 340.0 Community Service Work Hours Completed in Other Counties

A total of 12,859.0 community service work hours were assigned during 2002. A total of 7,871.0 community service work hours were supervised through Otter Tail County Court Services. A total of 795.0 community service hours were supervised for Otter Tail County by another county.

(2001 = 10,218.00 hours assigned; 2000 = 9,870.60 hours assigned)

Department of Corrections Community Service Work Supervised by Otter Tail County Community Service Specialist:

25 Adults 3,619.25 Community Service Work Hours Assigned
 749.75 Community Service Work Hours Completed in Otter Tail County

JUVENILE JAIL REMOVAL PROJECT:

Number of Juveniles Held in the Temporary Hold Facility:

Delinquents: 29 (2001 = 32; 2000 = 20)

*CHIPS: 0 (2001 = 2; 2000 = 3) (*Child In Need of Protective Services)

A total of 29 juveniles were held in the Temporary Hold Facility.

JUVENILE RESTITUTION WORK PROGRAM:

Number of Juveniles Referred to Program: 26 (2001 = 16; 2000 = 9)

Number of Hours Worked: 1,049.70 (2001 = 1,197.42; 2000 = 453.09)

Amount Paid Out to Victims: \$4,461.22 (2001 = \$5,087.35; 2000 = \$1,925.65)

OTTER TAIL COUNTY
COURT SERVICES PROGRAMS FOR 2002

(CONTINUED)

JUVENILE COMMITMENTS TO THE MINNESOTA COMMISSIONER OF CORRECTIONS: 0
(2001 = 0)
(2000 = 0)

JUVENILE OUT-OF-HOME PLACEMENTS

Out-of-Home Placements: 47 (2001 = 36; 2000 = 51)

Juvenile Secure Sex Offender Treatment: 0 (2001 = 0; 2000 = 3)

Shelter Care Placements: 15 (2001 = 11; 2000 = 14)

Juveniles Held in Secure Detention: 54 (2001 = 49; 2000 = 57)

Average Number of Days Held in Secure Detention: 8.1 (2001 = 9.5; 2000 = 11)

Delinquent Juveniles Held in Temporary Hold Facility: 29 (2001 = 32; 2000 = 20)

PROBATION RESTRUCTURE/MODIFICATION 2002

Number of Probation Case Modifications approved: 8 (2001 = 8, 2000 = 14)

Additional Community Service Hours Imposed: 37 (2001 = 66, 2000 = 120)

Additional Chemical Dependency Evaluations Assigned: 2 (2001 = 3, 2000 = 4)

Additional Random Urinalysis Testing Authorized: 2 (2001 = 2, 2000 = 1)

2002 Annual Intakes

Juveniles: 357
 Adults: 262

Number Drug/Alcohol related: 161
 Number Drug/Alcohol related: 147

Percentage: 45.10%
 Percentage: 56.11%

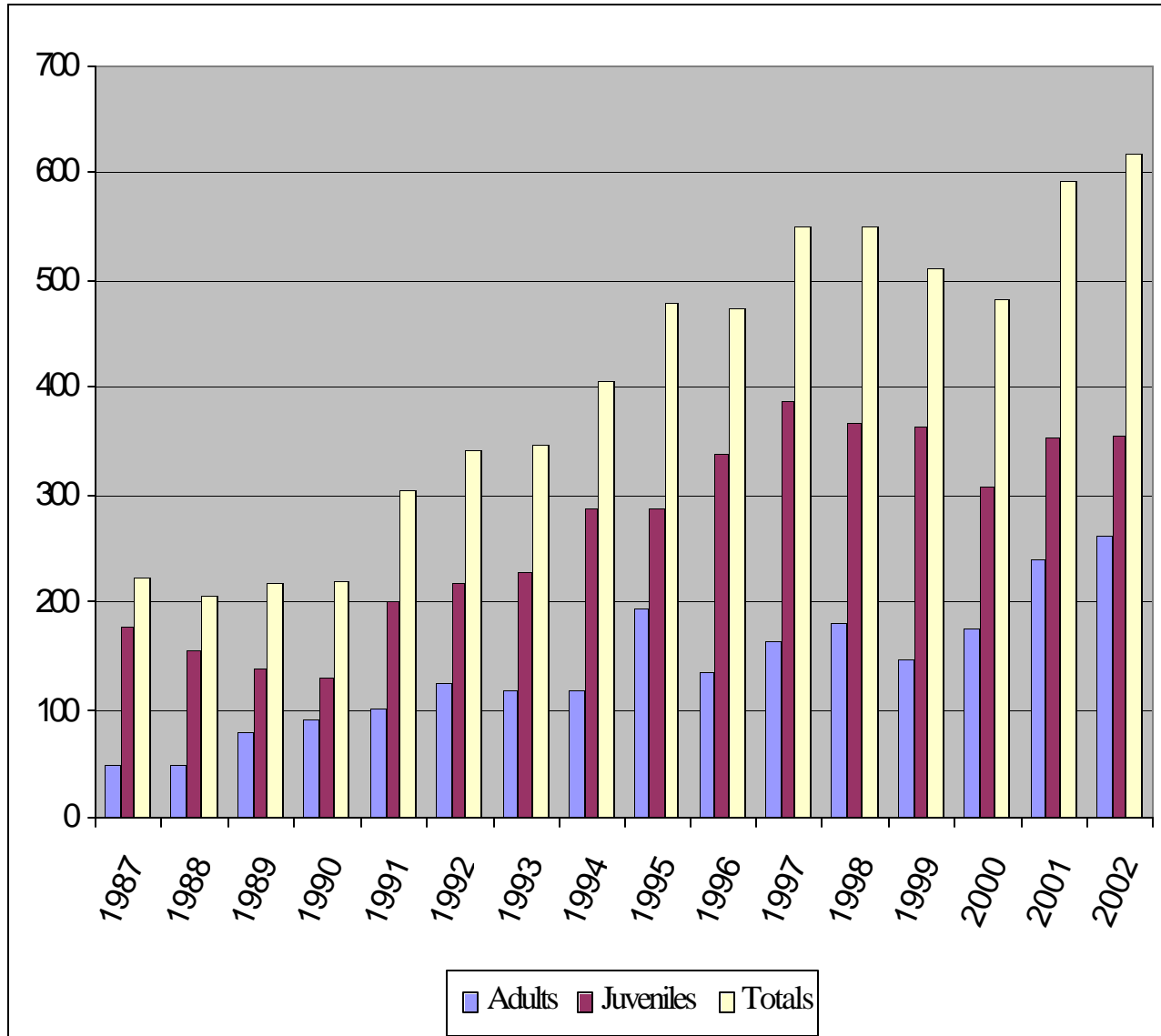
Otter Tail County Court Services Adult – Juvenile Annual Intakes

	ADULTS	JUVENILES	TOTALS
1985	92	162	254
1986	72	146	218
1987	47	177	224
1988	49	156	205
1989	79	138	217
1990	90	129	219
1991	103	201	304
1992	123	218	341

1993	118	230	348
1994	118	288	406
1995	194	287	481
1996	136	338	474
1997	164	386	550
1998	181	368	549
1999	147	364	511
2000	175	308	483
2001	240	354	594
2002	262	357	619

Otter Tail County Court Services

Adult – Juvenile Annual Intakes



Otter Tail County Court Services

ADULT - JUVENILE MONTHLY CASELOAD

	<u>2002</u>	<u>2001</u>	<u>2000</u>	<u>1999</u>	<u>1998</u>	<u>1997</u>	<u>1996</u>	<u>1995</u>	<u>1994</u>	<u>1993</u>	<u>1992</u>	<u>1991</u>	<u>1990</u>	<u>1989</u>	<u>1988</u>	<u>1987</u>	<u>1986</u>
JANUARY	384	318	312	351	313	308	280	279	234	280	263	172	173	167	170	155	165
FEBRUARY	396	327	310	352	326	310	305	282	249	284	262	177	179	169	157	160	166
MARCH	382	312	322	344	325	310	297	299	244	289	260	175	177	171	157	155	172
APRIL	364	319	330	330	325	312	315	306	254	291	262	177	176	169	167	163	177
MAY	356	322	346	307	328	311	319	299	262	317	258	193	169	174	166	156	177
JUNE	350	336	346	315	338	295	317	285	260	279	269	184	156	154	164	154	173
JULY	363	337	326	307	349	329	308	278	261	281	250	187	154	157	156	151	170
AUGUST	379	327	319	301	326	318	327	265	257	253	256	182	155	156	161	146	158
SEPTEMBER	383	329	313	313	330	332	317	275	237	256	250	209	154	154	170	162	165
OCTOBER	380	344	327	312	328	325	305	295	237	273	269	227	167	169	153	168	144
NOVEMBER	392	353	323	295	338	333	317	275	239	260	282	234	174	171	146	172	147
DECEMBER	406	354	313	304	355	310	308	255	263	237	289	255	172	176	158	178	155
AVERAGE MONTHLY CASELOAD	378	332	324	319	332	316	310	283	250	275	264	198	167	165	160	160	164

Adult-Juvenile Average Monthly Caseload

