

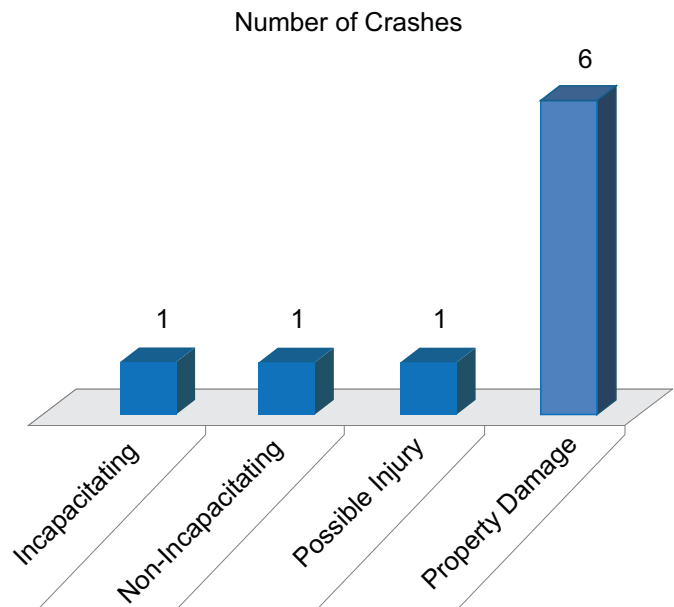
Safety Analysis

Crashes By Type

DATA

Study Length:	5 years
Segment Length:	3.2 miles
Corridor Crash Rate (MVM):	1.5
Statewide Average Crash Rate (MVM):	1.1
Corridor Critical Crash Rate (MVM):	2.2

MVM=Million Vehicle Miles



Crash Rate Comparison

FINDINGS:

Between 2002 and 2006 this 3.2 mile segment of CSAH 9 (from 490th St. to the CSAH 9/20 junction) had an actual corridor crash rate higher than the average crash rate for similar county (CSAH) roads in Otter Tail County. The critical crash rate was also calculated for this segment of CSAH 9 to determine the statistical significance of the crash rate comparison, and accounts for variation in traffic volumes among facilities and the random nature of crashes. For purposes of this calculation, a 95th-percentile confidence interval was selected as the threshold. Meaning one can be 95 percent confident that this segment of CSAH 9, with crash rates below the critical crash rate, but above the County's average crash rate, is safe and that the higher than average crash rate is due to the random nature of crashes.

